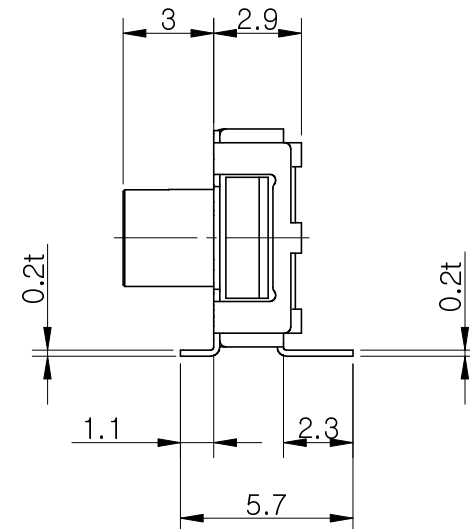
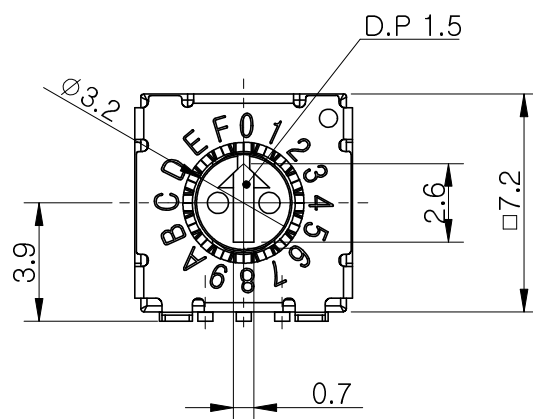
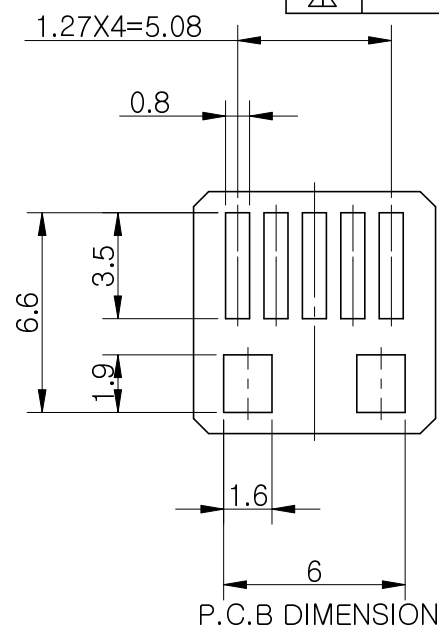
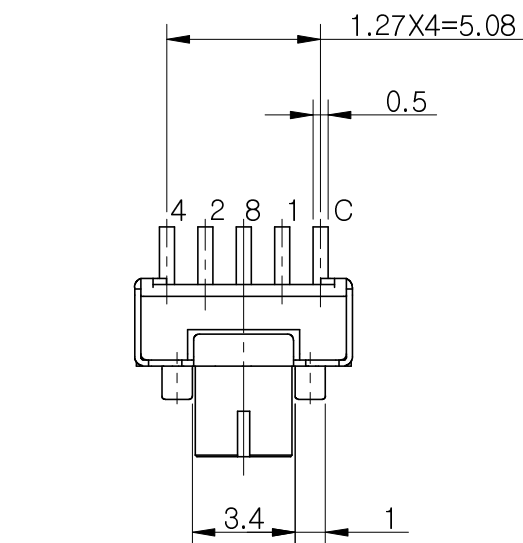
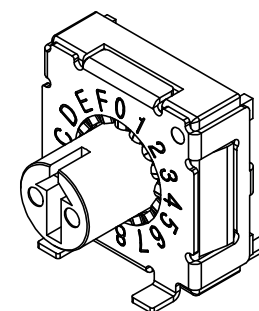


MRK.	DATE	REVISION	SIGN
△			



Specification

- Operating Voltage : 42V
(None-Switching : 100mA, DC50V)
(Switching : 100mA, DC5V)
- Contact Resistance : 100mΩ Max
- Insulation Resistance : 100MΩ Min
- Operating Force : 200gf.cm Max
- Life cycle : 10,000 steps
- Sealing : Comparable IP67



		Real Code				
10 P o s i t i o n		C	1	2	4	8
	0	●				
16 P o s i t i o n	1	●	●			
	2	●		●		
	3	●		●		
	4	●			●	
	5	●	●		●	
	6	●		●	●	
	7	●	●	●	●	
	8	●				●
	9	●	●			●
	A	●		●		●
	B	●	●	●		●
	C	●			●	●
	D	●	●		●	●
	E	●		●	●	●
	F	●	●	●	●	●

STANDARD LAYOUT

01	ASSEMBLY	재질 <지정안함>		1	-
NO.	DESCRIPTION	MATERIAL		COLOR/FINISH	VENDOR
DRAW/DESIGNED	CHECKED	APPROVED		TITLE	ASSEMBLY
				MODEL	GSPR-16MS
2017-12-01			UNIT mm	SCALE 4:1	SHEET
SUNGmun ELECTRONICS CO.,LTD			SIZE A4	DRAW NO.	GSPR-16MS-01
					1/1