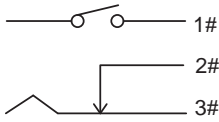


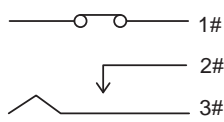
# SJ Series

DC Power Jack With Slide Switches

## SCHEMATIC



OPEN CIRCUIT



CLOSED CIRCUIT  
(PLUG IN)

## SPECIFICATION

**RATING** : DC 15V 2A ; DC 16V 3A

**CONTACT RESISTANCE** : 30 mΩ MAX.

**INSULATION RESISTANCE** : 100 MΩ MIN.

**MECHANICAL LIFE** : 30,000 cycles.

## MATERIALS

**CASE & HOUSING** : Glass filled Nylon 6/6, black.

**ACTUATOR** : Glass filled Nylon 6/6, gray.

**CONTACT** : Copper alloy, silver plated.

**TERMINALS** : Copper alloy, silver plated.

**PIN** : Brass, nickel plated.

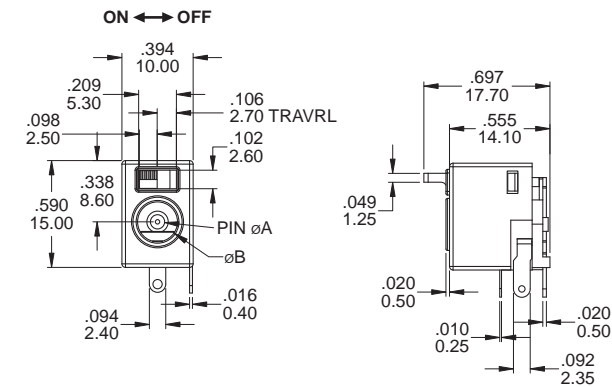


## MODEL OPTIONS

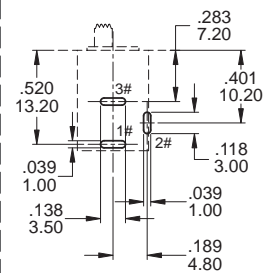


SPST

Dimensions MODEL	PIN Ø A	Ø B
SJ-003	Ø2.00	Ø5.60
SJ-006	Ø2.50	Ø5.60

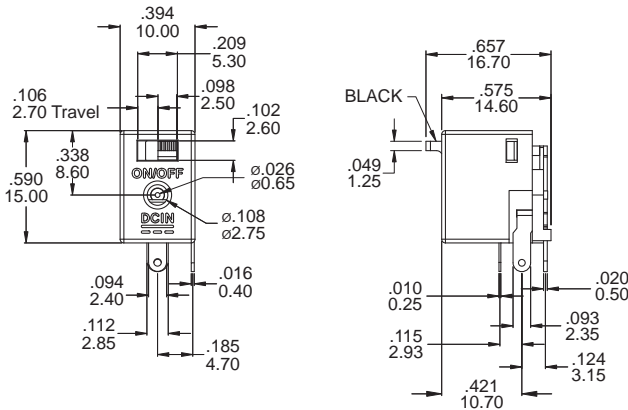


P.C.B LAYOUT  
Bottom View

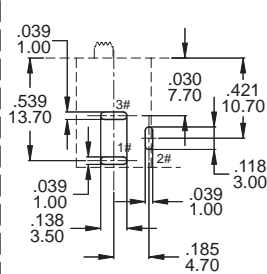


SPST

Part No. Shown : SJ-007

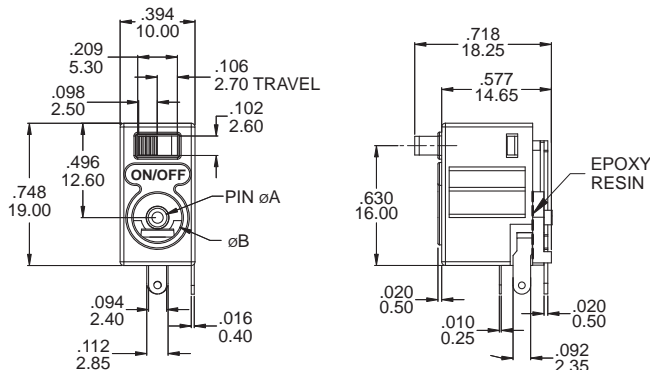


P.C.B LAYOUT  
Bottom View



SPST

Dimensions MODEL	PIN Ø A	Ø B
SJ-004	Ø2.00	Ø6.30
SJ-005	Ø2.50	Ø6.50



P.C.B LAYOUT  
Bottom View

