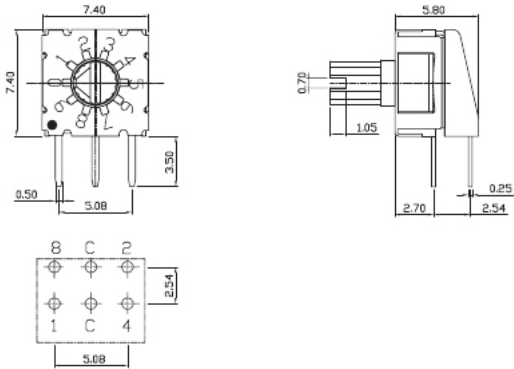


SKCR-10H1



How to Order 选型表

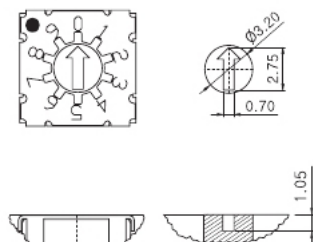
Type	Actuators	Code	Position	Terminals	Packing
SK ST SH	1	2	3	4	5
ex) SK	A	R	10	H	-

General Specification 产品性能

1. Rating 工作电流, 电压	Voltage 42V 100mA (Switching) 400mA (None-Switching)
2. Contact Resistance 接触电阻	80mΩ Max
3. Insulation Resistance 绝缘电阻	100MΩ Min
4. Operating Force 操作力	120gf ± 30gf
5. Life Cycle 使用寿命	25,000 steps
6. Solder Condition 焊接方式	Iron Soldering : 4s/350℃ Wave Soldering : 5s/280℃
7. Sealing 防水系数	IP67 (Dust & Water Proof)

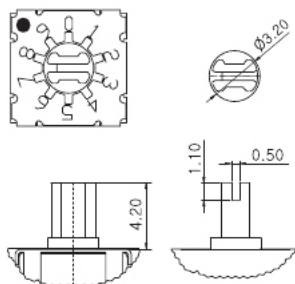
1 Actuators 外观形式

A



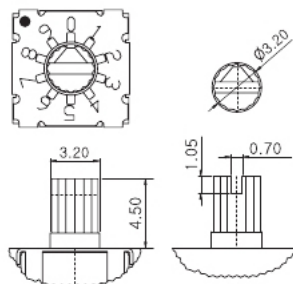
Application : SK series
ST series
SH series

B



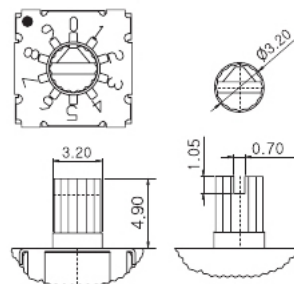
Application : SK series

C



Application : SK series

D



Application : SK series

2 Code 编码表

R

Real Code

10 Position	Real Code				
	C	1	2	4	8
0	*				
1	*	*			
2	*	*	*		
3	*	*	*	*	
4	*	*	*	*	*
5	*	*	*	*	*
6	*	*	*	*	*
7	*	*	*	*	*
8	*	*	*	*	*
9	*	*	*	*	*

Actuator Color
SK Type : Red
ST Type : Green
SH Type : Yellow

16 Position	Real Code				
	C	1	2	4	8
0	*				
1	*	*			
2	*	*	*		
3	*	*	*	*	
4	*	*	*	*	*
5	*	*	*	*	*
6	*	*	*	*	*
7	*	*	*	*	*
8	*	*	*	*	*
9	*	*	*	*	*
10	*	*	*	*	*
11	*	*	*	*	*
12	*	*	*	*	*
13	*	*	*	*	*
14	*	*	*	*	*
15	*	*	*	*	*

Actuator Color
SK Type : Gray
ST Type : Indigo

C

Complement Code

10 Position	Complement Code				
	C	1	2	4	8
0	*	*	*	*	*
1	*	*	*	*	*
2	*	*	*	*	*
3	*	*	*	*	*
4	*	*	*	*	*
5	*	*	*	*	*
6	*	*	*	*	*
7	*	*	*	*	*
8	*	*	*	*	*
9	*	*	*	*	*

Actuator Color
SK Type : Orange
ST Type : Black

16 Position	Complement Code				
	C	1	2	4	8
0	*	*	*	*	*
1	*	*	*	*	*
2	*	*	*	*	*
3	*	*	*	*	*
4	*	*	*	*	*
5	*	*	*	*	*
6	*	*	*	*	*
7	*	*	*	*	*
8	*	*	*	*	*
9	*	*	*	*	*
10	*	*	*	*	*
11	*	*	*	*	*
12	*	*	*	*	*
13	*	*	*	*	*
14	*	*	*	*	*
15	*	*	*	*	*

Actuator Color
SK Type : Ivory

G

Gray Code

10 Position	Gray Code				
	C	1	2	4	8
0	*	*	*	*	*
1	*	*	*	*	*
2	*	*	*	*	*
3	*	*	*	*	*
4	*	*	*	*	*
5	*	*	*	*	*
6	*	*	*	*	*
7	*	*	*	*	*
8	*	*	*	*	*
9	*	*	*	*	*

Actuator Color
SK Type : Brown

16 Position	Gray Code				
	C	1	2	4	8
0	*	*	*	*	*
1	*	*	*	*	*
2	*	*	*	*	*
3	*	*	*	*	*
4	*	*	*	*	*
5	*	*	*	*	*
6	*	*	*	*	*
7	*	*	*	*	*
8	*	*	*	*	*
9	*	*	*	*	*
10	*	*	*	*	*
11	*	*	*	*	*
12	*	*	*	*	*
13	*	*	*	*	*
14	*	*	*	*	*
15	*	*	*	*	*

Actuator Color
SK Type : Blue

L

Code

4 Position	L Code			
	C	0	1	2
0	*	*	*	*
1	*	*	*	*
2	*	*	*	*
3	*	*	*	*

M

4 Position	M Code			
	C	1	2	3
1	*	*	*	*
2	*	*	*	*
3	*	*	*	*
4	*	*	*	*

3

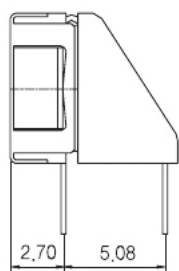
Position 位数形式

4 Position	10 Position	16 Position
---------------	----------------	----------------

4 Terminals PIN角形式

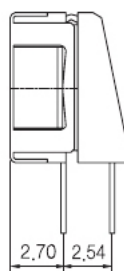
-

Angle Type (5.08)



C

Angle Type (2.54)

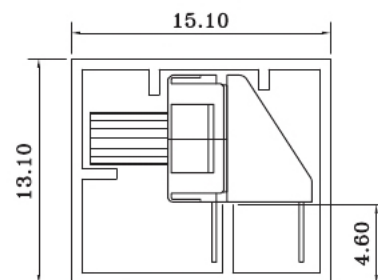


5

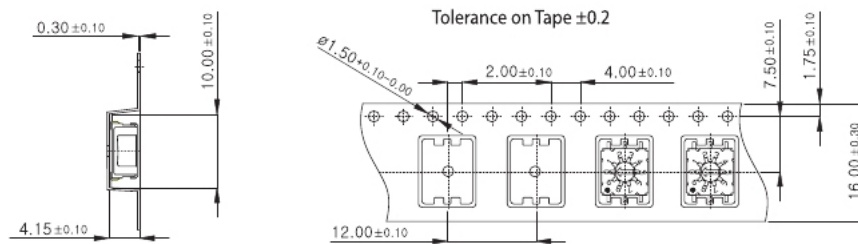
Packing 包装形式

-

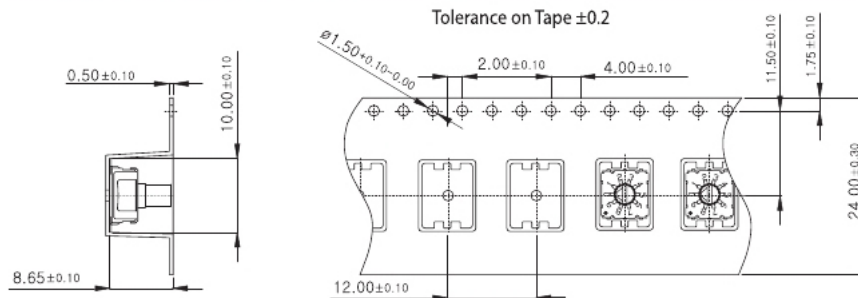
Tube Packing Q'ty : 65pcs / Tube



SKAR-S (SMD) Type 类型 :



SKCR-S (SMD) Type 类型:



SKDR-S (SMD) Type 类型:

