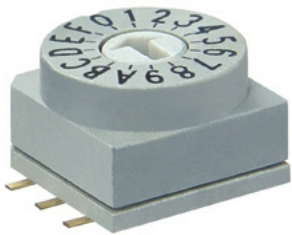


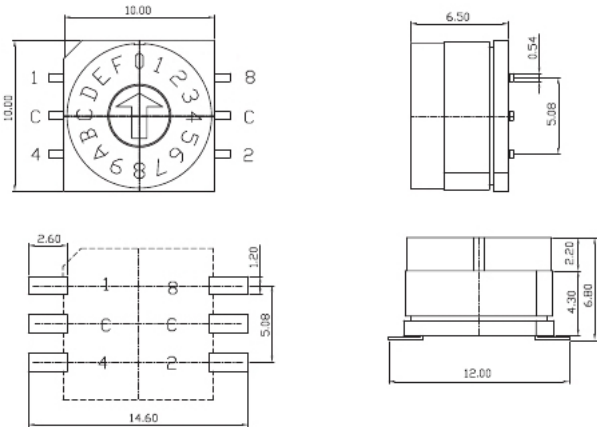
MER-16S



MER-16S

1 Type

Round
SMD Type



How to Order 选型表

	Type	Actuators	Code	Position	Terminals	Packing
	1	2	3	4	5	6
ex)	P	E	R	10	S	TR

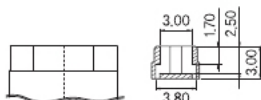
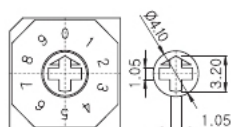
	Type	Actuators	Code	Position	Terminals	Packing
	1	2	3	4	5	6
ex)	M	E	R	10	S	TR

General Specification 产品性能

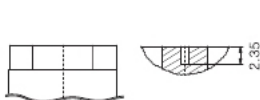
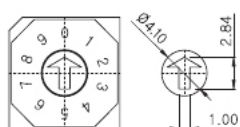
1. Rating 工作电流, 电压	Voltage 42V 150mA (Switching) 200mA (None-Switching)
2. Contact Resistance 接触电阻	80mΩ Max
3. Insulation Resistance 绝缘电阻	100MΩ Min
4. Operating Force 操作力	700gf Max
5. Life Cycle 使用寿命	10,000 steps
6. Solder Condition 焊接方式	Reflow Soldering : 10s/260°C Iron Soldering : 4s/350°C Wave Soldering : 5s/280°C
7. Sealing 防水系数	IP67 (Dust & Water Proof) * Except Cross Type of Actuator ("D" Type)

2 Actuators 外观形式

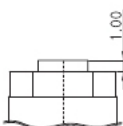
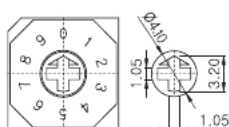
D



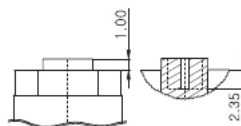
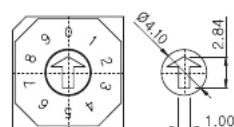
E



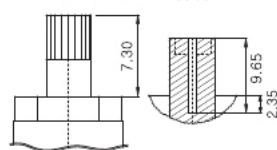
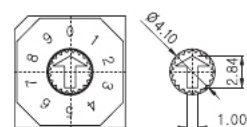
F



G



H



3 Code 编码表

See Page 37

4 Position 位数形式

4 Position

6 Position

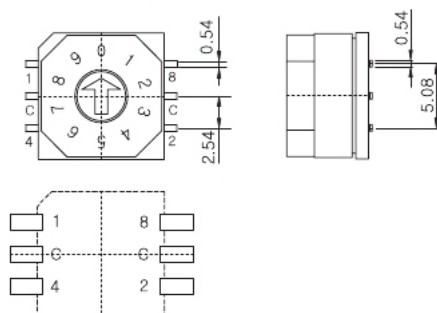
8 Position

10 Position

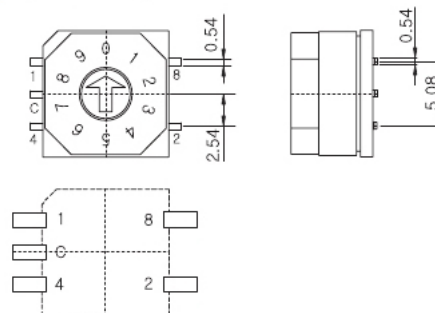
16 Position

5 Terminals PIN角形式

- Standard Type

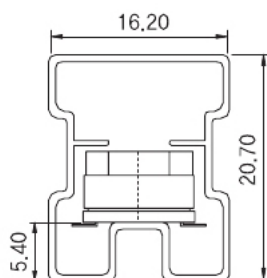


C (3×2 Ter')



6 Packing 包装形式

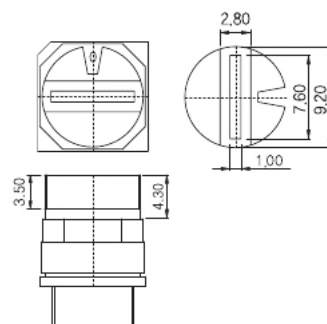
- Tube Packing
Q'ty : 50pcs / Tube



TR Reel Packing
(See Page 49)

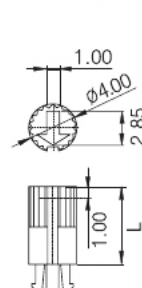
Accessories 配件

AC-100 G



* Applicable to only 'D' Actuators
* Should be mounted after soldering

BC-200 G



BC-200 G
L : 7.3mm

BC-201 G
L : 11.6mm

BC-202 G
L : 13.3mm

G : Gray R : Red K : Black
Y : Yellow B : Blue C : Clear