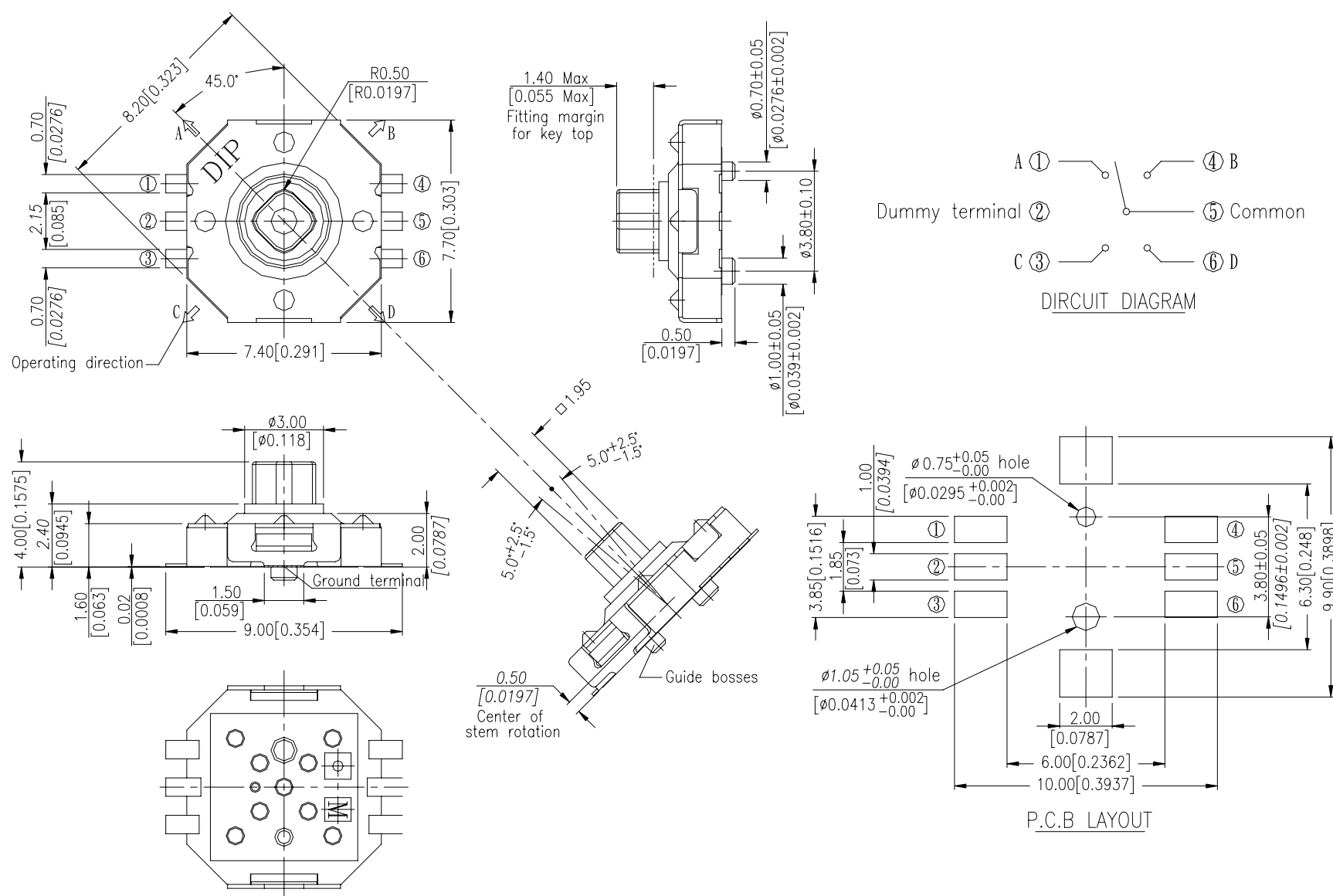


MT5/MT4 SERIES



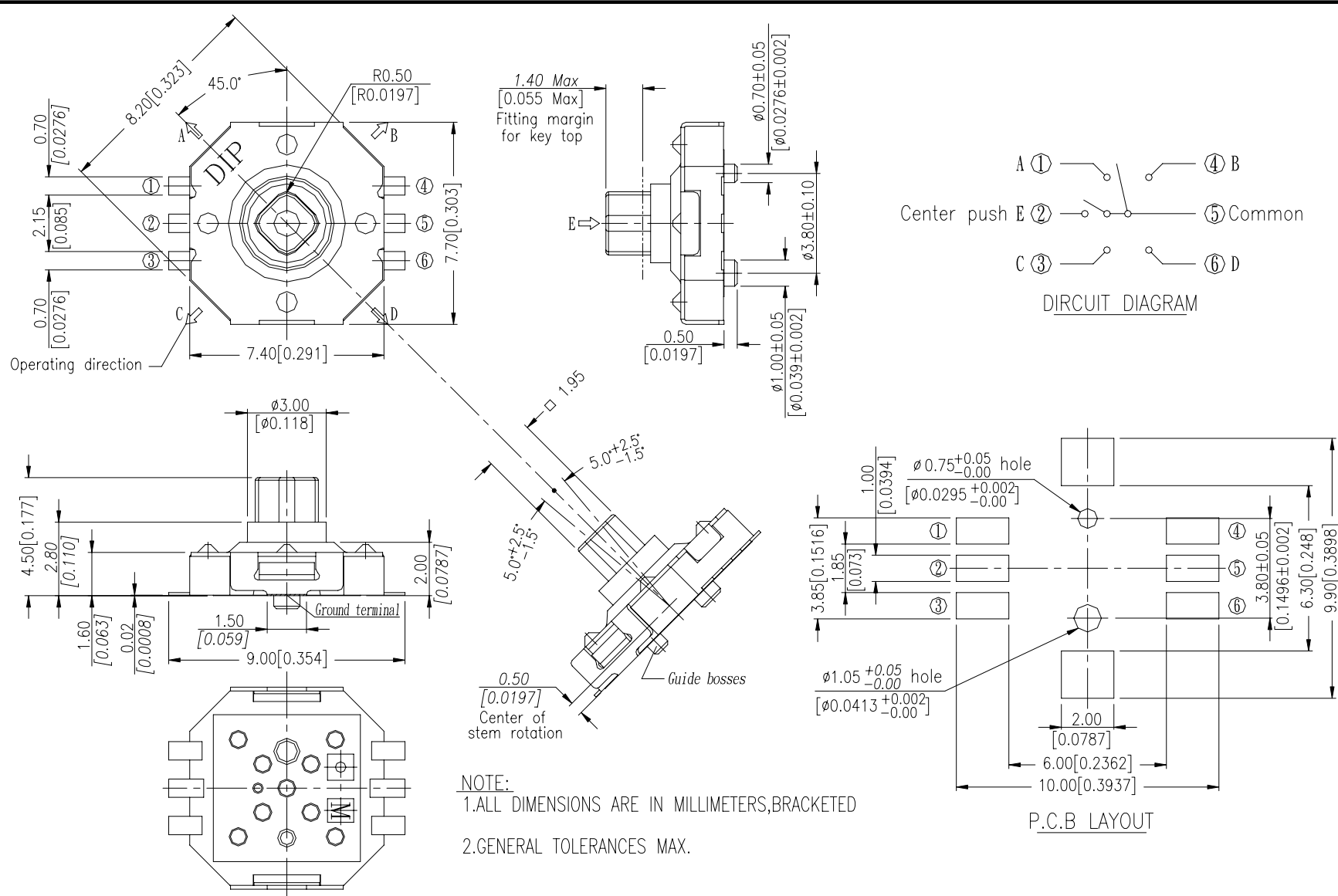
DIMENSIONS

MT4-F

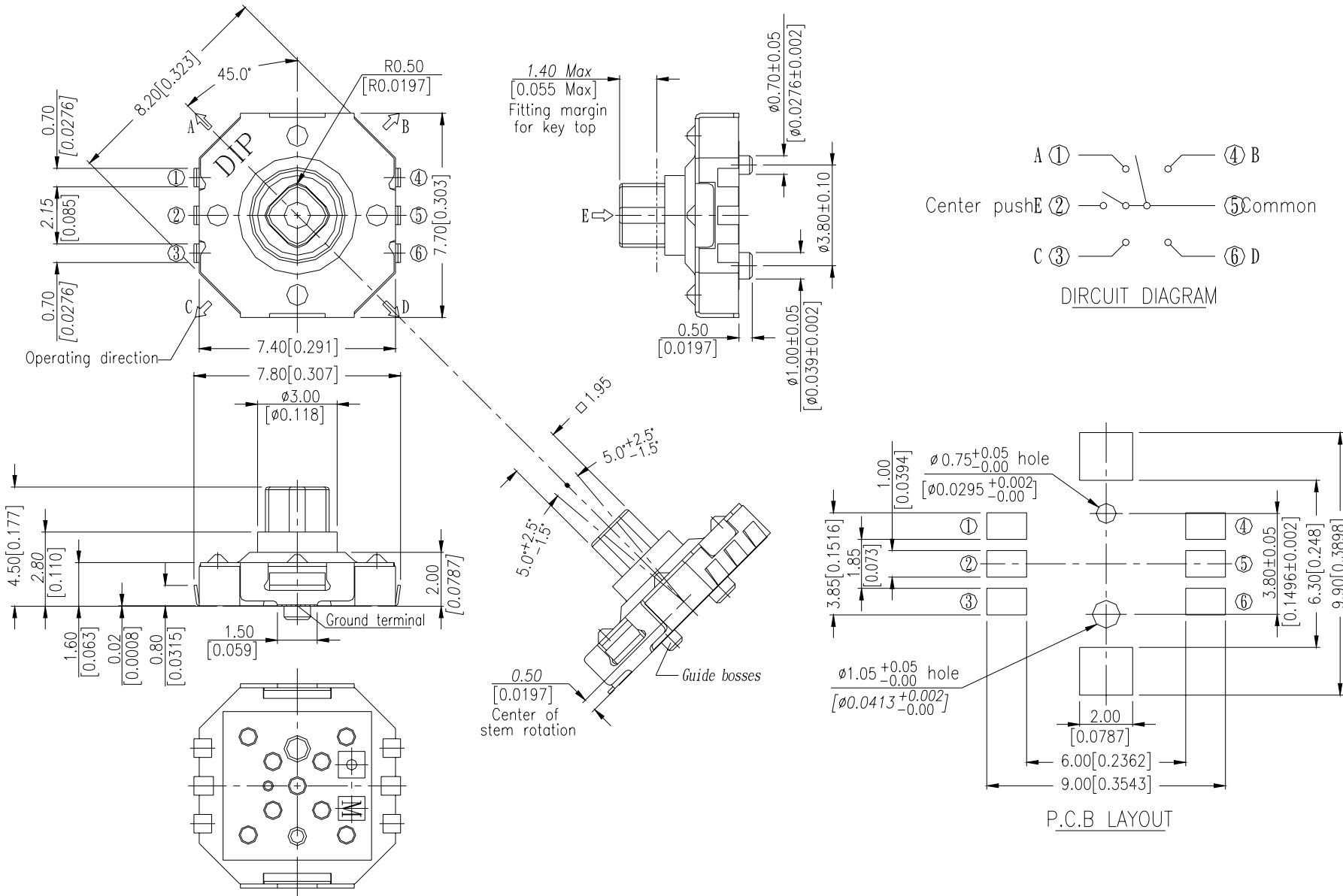


General Tolerance : $\pm 0.2\text{mm}$

MT5-F

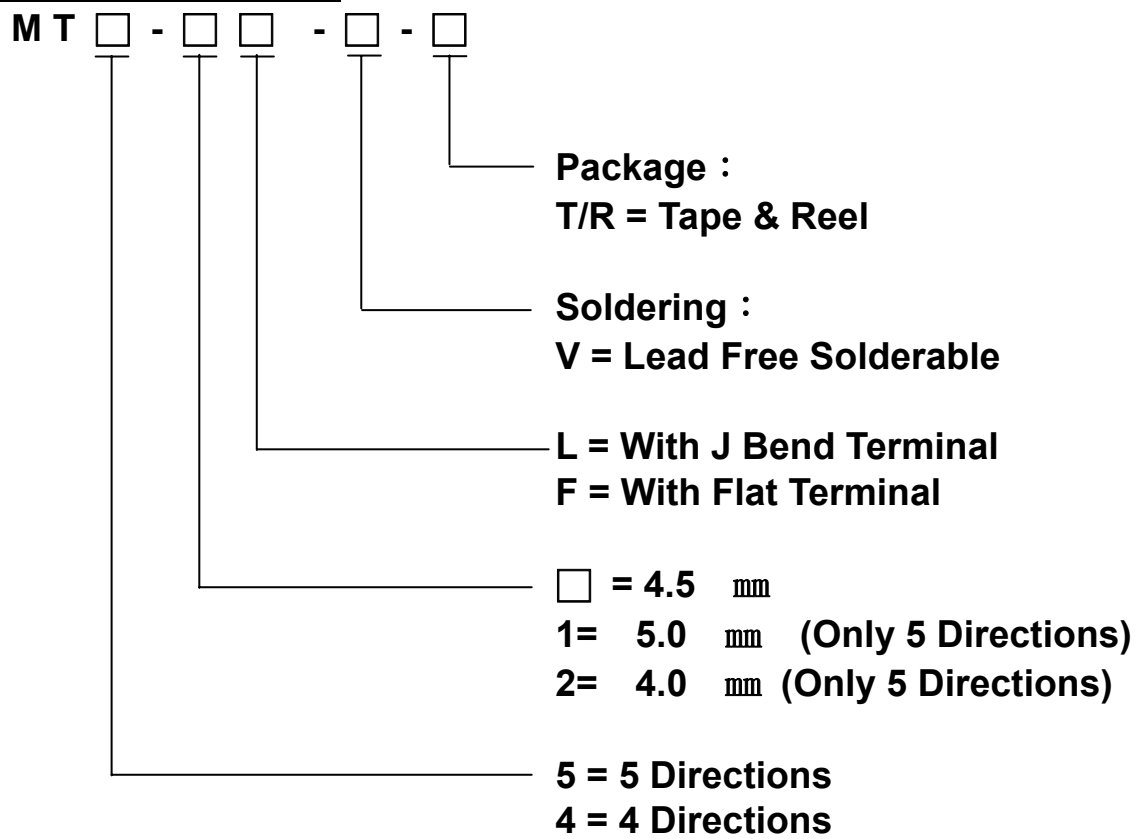


General Tolerance : $\pm 0.2\text{mm}$

MT5-L

General Tolerance : $\pm 0.2\text{mm}$

HOW TO ORDER



SPECIFICATION

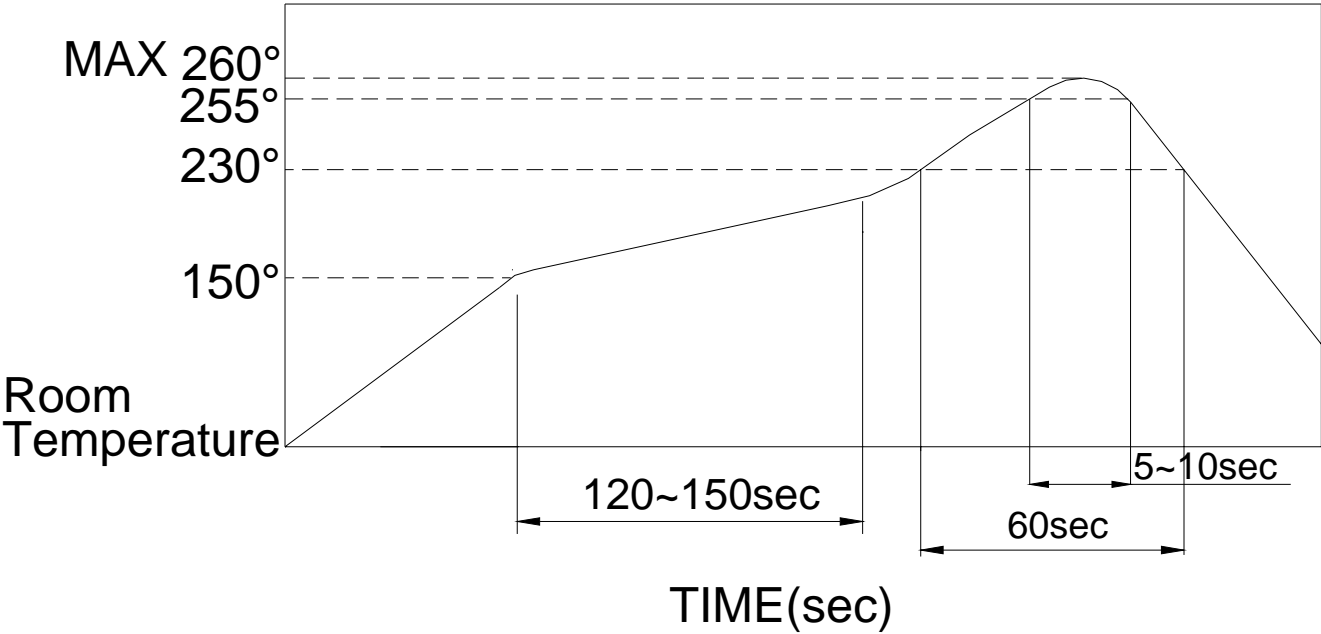
- △MECHANICAL
- Operation Force: 4-direction: 160gf
- Center push: 320gf
- Stroke: 4- direction: 5°+2.5°/-1.5° mm
- Center push: 0.25+0.1/-0.2 mm
- Operation Temperature Range: -25°C to +85°
- △ELECTRICAL
- Electrical Life: 100,000 cycles
- Rating: 50mA, 12VDC
- Contact Resistance: 100mΩ max.
- Insulation Resistance: 100MΩ min. at 100VDC
- Dielectric Strength: 250VAC/1 minute
- Contact Arrangement: 1 pole 1 throw

MATERIAL

- △BASE: UL94V-0 Nylon High-Temp. Thermoplastic
- Color: Black
- △COVER : Nickel silver
- △CENTER STEM: Nylon High-Temp Thermoplastic
- 5Directions Color: Black
- 4Directions Color: Brown
- △FOUR WAY STEM: Nylon High-Temp Thermoplastic
- △CONTACT : Stainless with silver cladding
- △TERMINAL: Brass with silver plated

SOLDERING PROCESSES

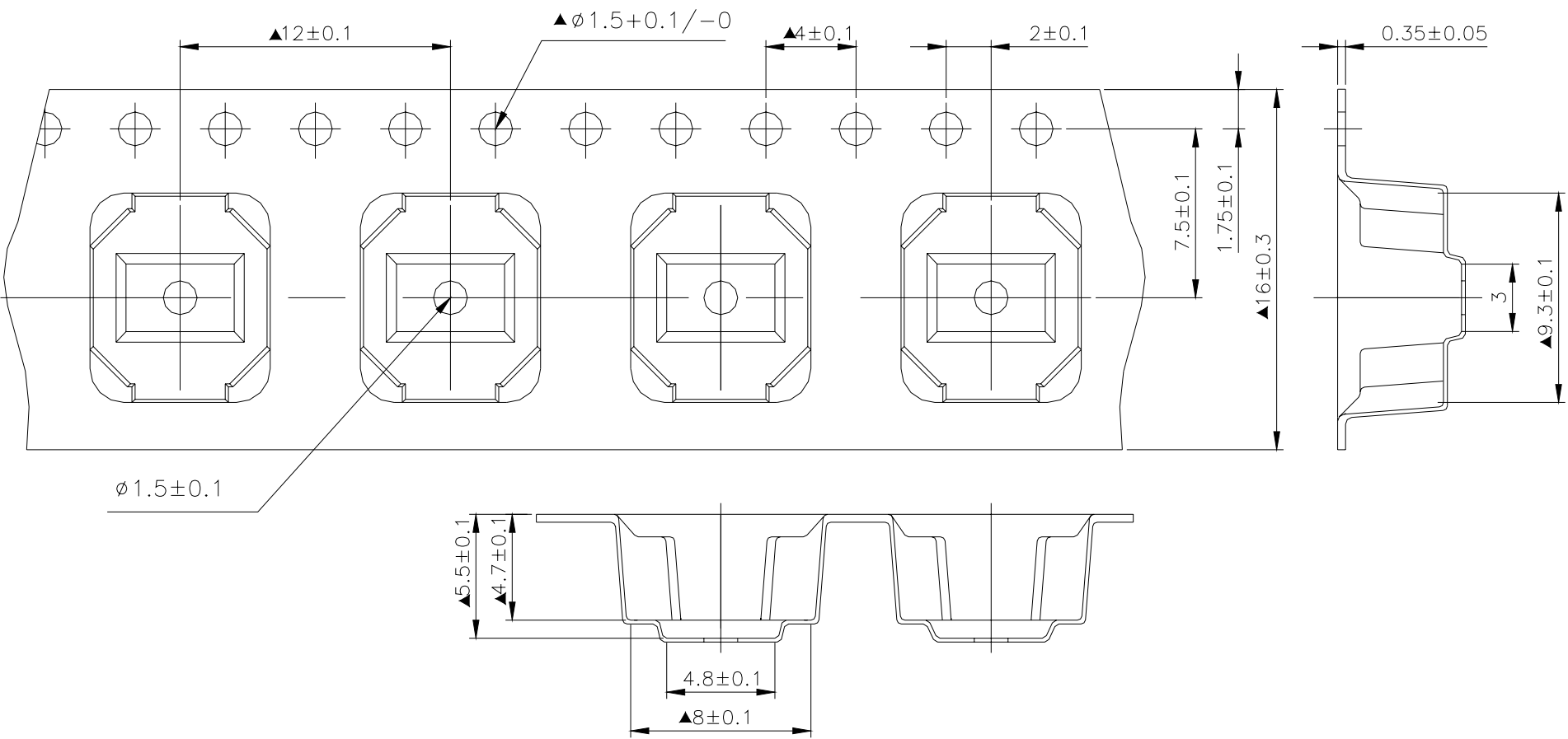
- △Hand Soldering : Use a soldering iron of 30 watts,
controlled at 350°C approximately
5 seconds while applying
- △Reflow soldering : When applying reflow soldering, the
peak temperature or the reflow over
should be set to 260°C max
- △Temperature Profile:



PACKING

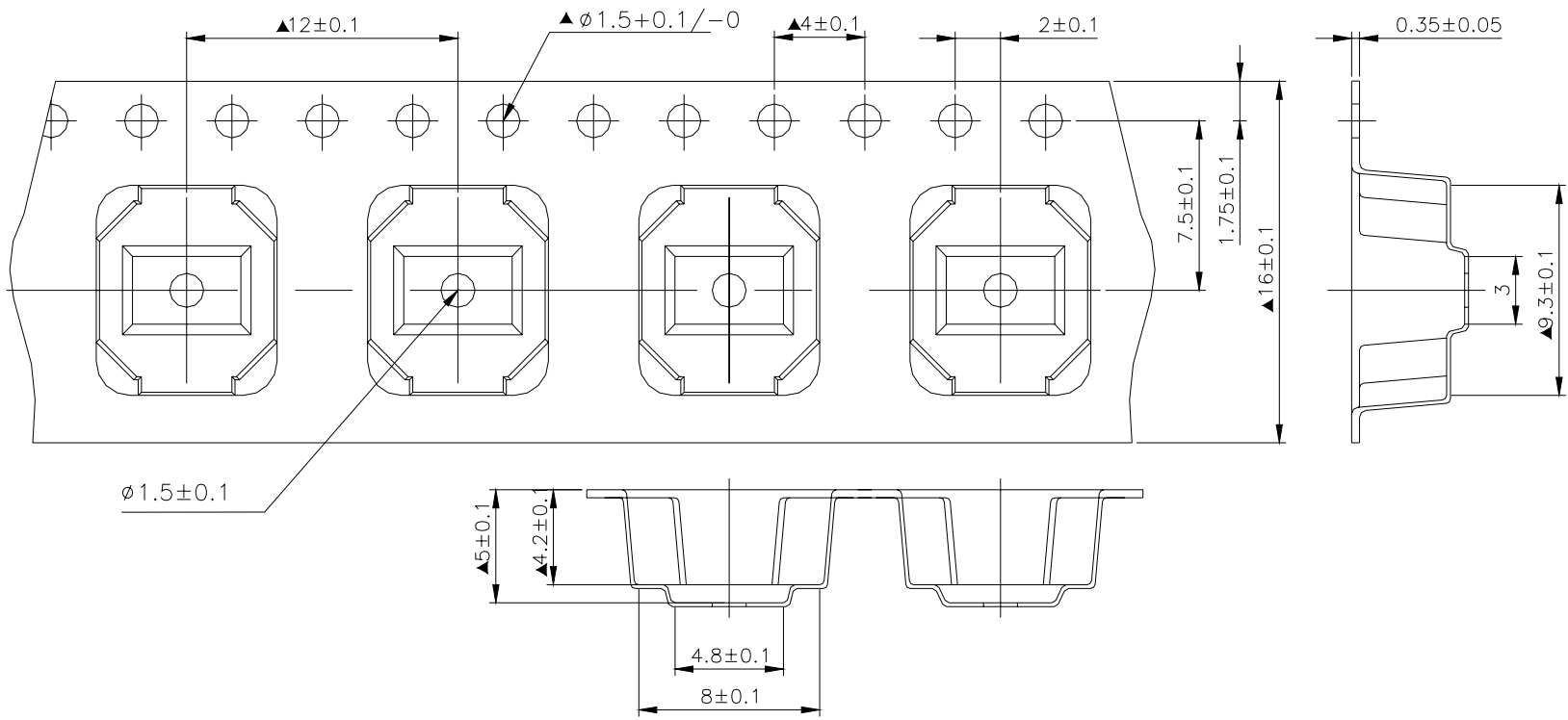
Part Number	Number Per Tube	Number Per Reel
MT4	-	850
MT5	-	850

MT5 REEL



General Tolerance : $\pm 0.1\text{mm}$

MT4 REEL



General Tolerance : $\pm 0.1\text{mm}$