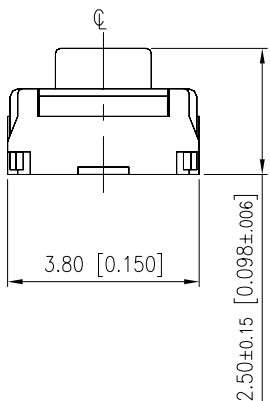
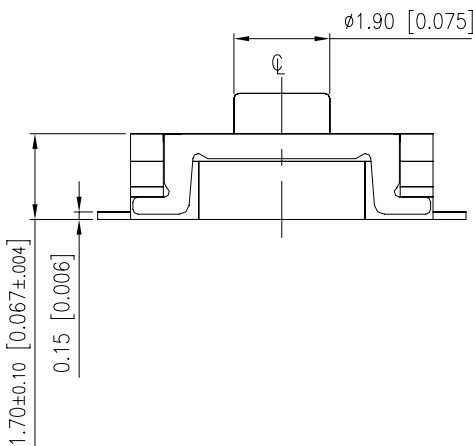
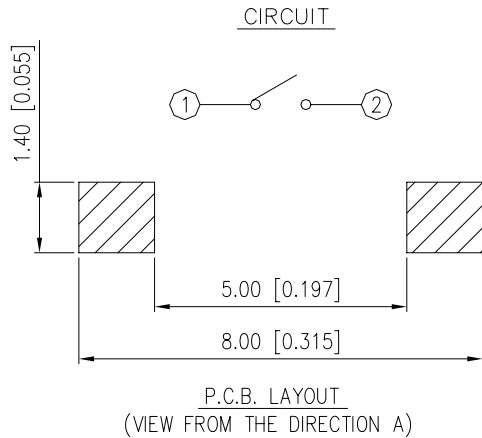
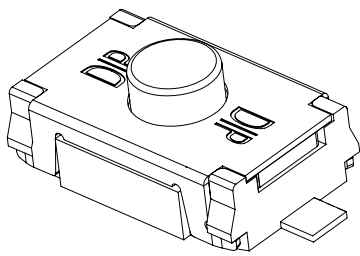
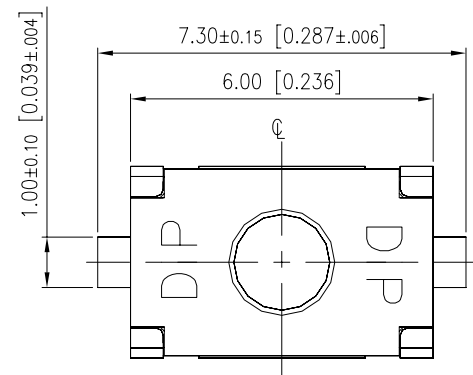


TAE SERIES



DIMENSIONS

TAE



General Tolerance : $\pm 0.2\text{mm}$

HOW TO ORDER

TAE ☐ - ☐ ☐ ☐ ☐ - V - ☐

Package Style :
T/R=Type & Reel

Soldering :
V=Lead Free

A=Dome Plating Gold
☐=Dome Plating Silver

Operating Force :
N=200gf
R=300gf
S=450gf

Dimension H :
25=2.5mm

F=Flat terminal

3.8X6mm Thinner Type Tactile Switch

SPECIFICATION

△MECHANICAL

Operation Force: N : 200gf
R : 300gf
S : 450gf

Stroke: N : 0.30±015mm
R : 0.35±015mm
S : 0.45±015mm

Operation Temperature: -40℃~85℃
Storage Temperature: -40℃~85℃

△ELECTRICAL

Electrical Life: N : 200,000 cycles
R : 200,000 cycles
S : 100,000 cycles

Rating:25mA , 24VDC
Contact Resistance: 100mΩ max.
Insulation Resistance: 100MΩ min.
Dielectric Strength: 300VAC/1 minute

MATERIAL

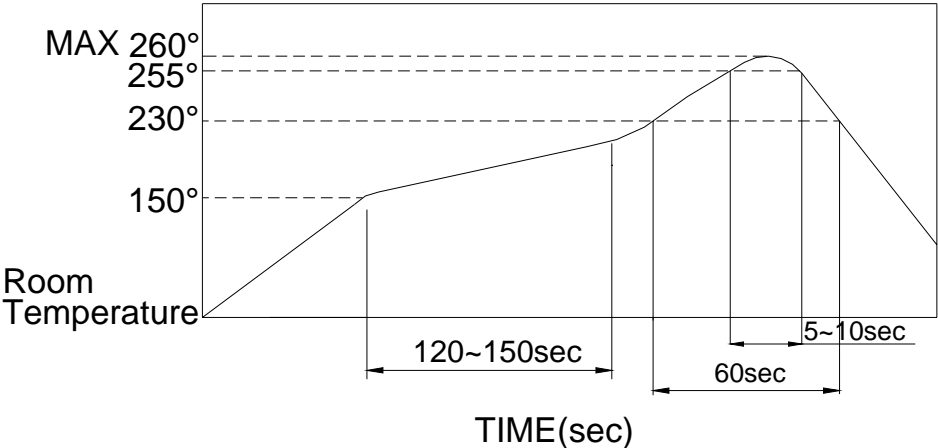
△COVER: Stainless steel
△STEM: Rubber
Color: Black
△DOME : Stainless steel with silver plating
△BASE : LCP High-temp thermoplastic
Color: Black
△TERMINAL : Phosphor bronze, with silver plating

SOLDERING PROCESS

△HAND SOLDERING : Use a soldering iron of 30 watts, controlled at 350℃ approximately max 5 seconds while applying.

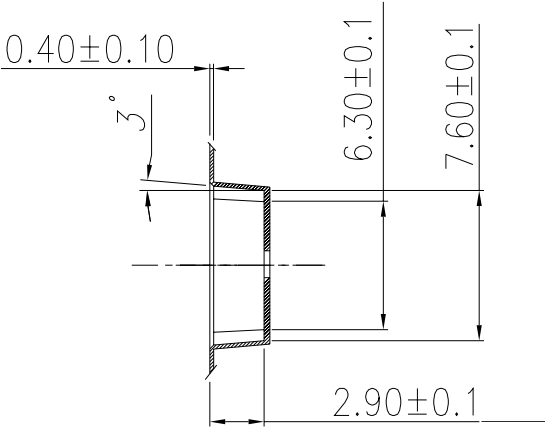
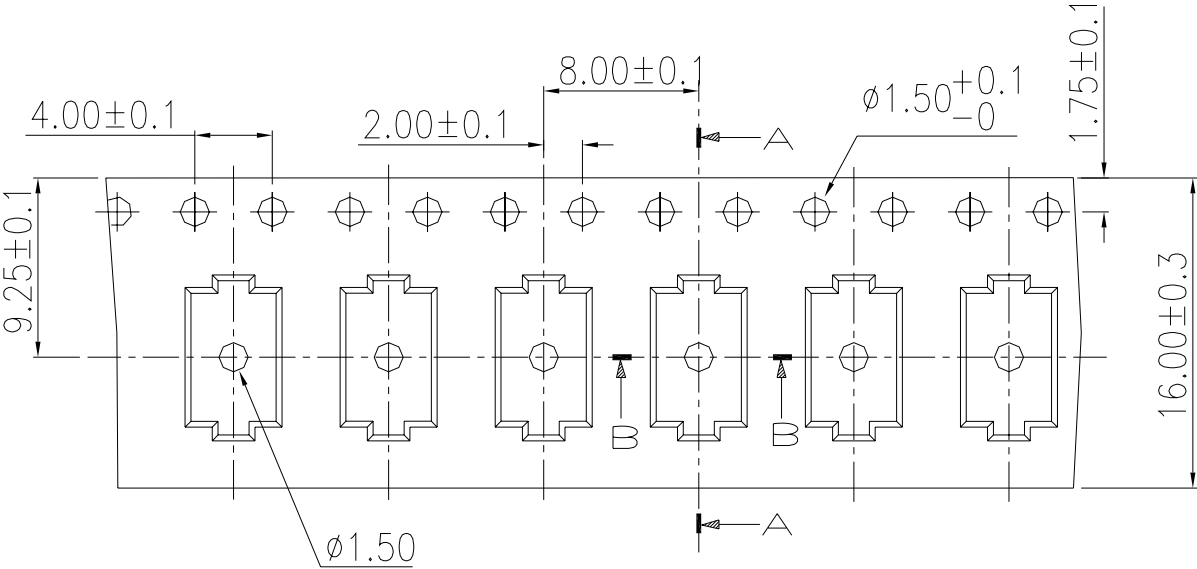
△Reflow Temperature Profile:

△REFLOW SOLDERING: When applying reflow soldering, the peak temperature or the reflow oven should be set to 260℃ max.

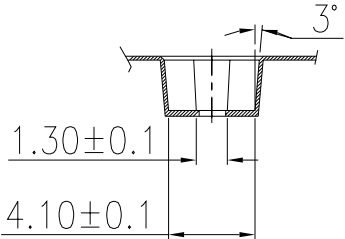


PACKING

Part Number	Number Per Reel	
TAE	2700	



A-ASection



B-BSection