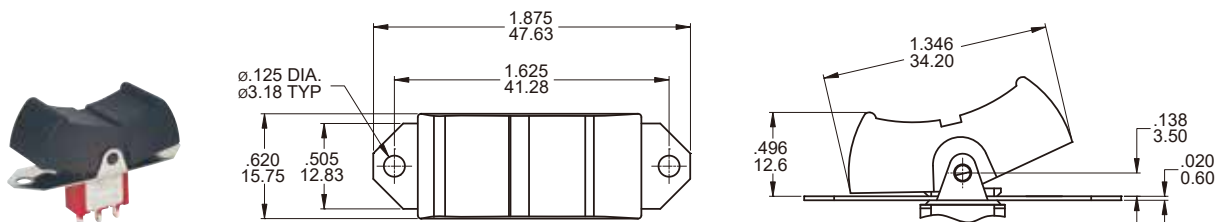


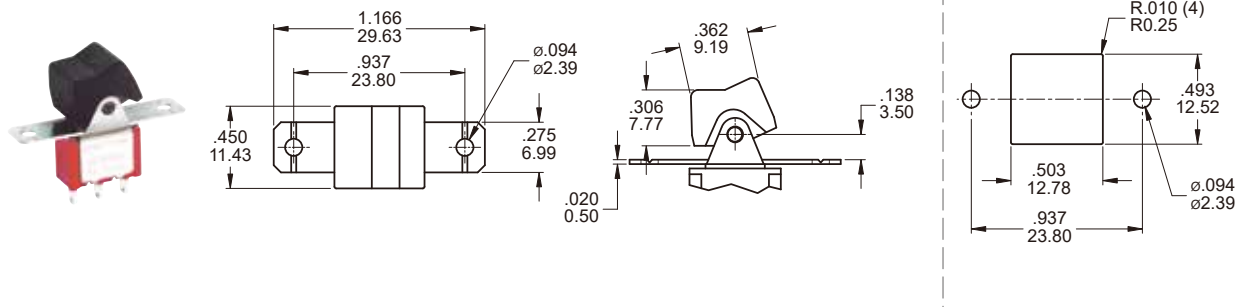


ACTUATOR OPTIONS SNAP-IN FRONT MOUNT

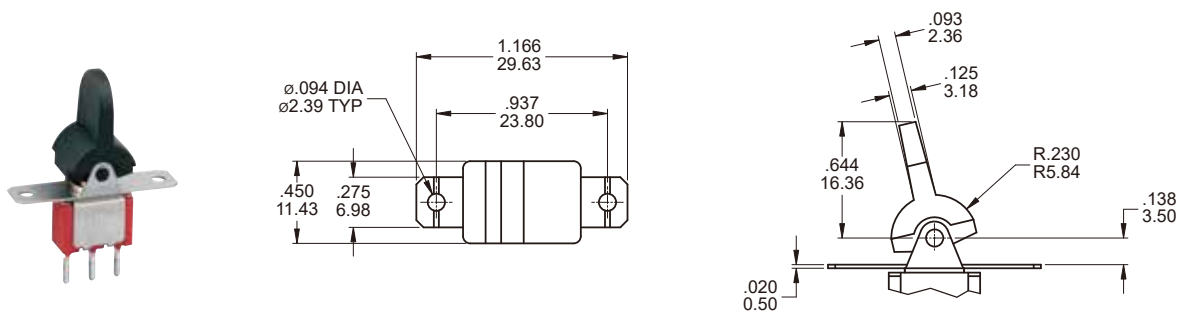
R5



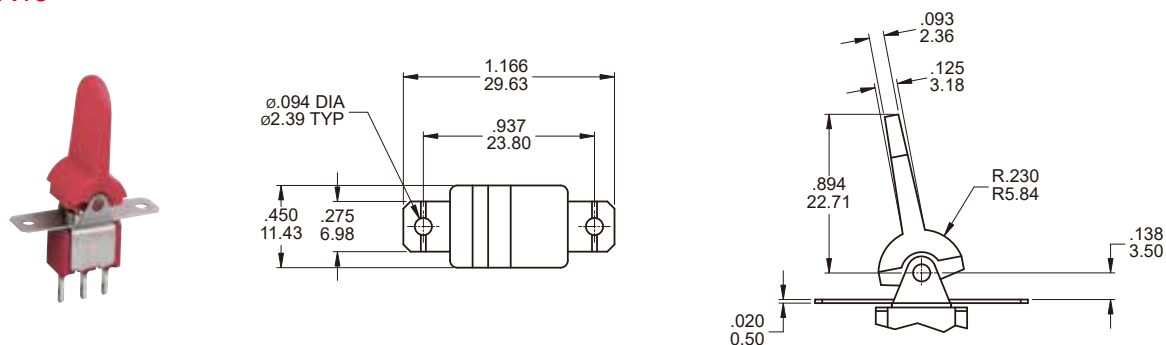
R11



R12

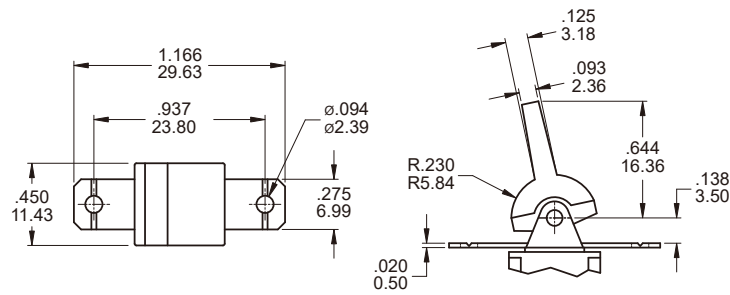


R13

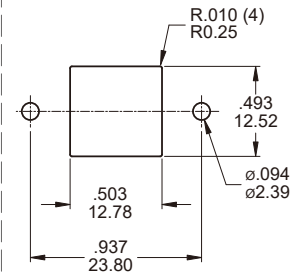




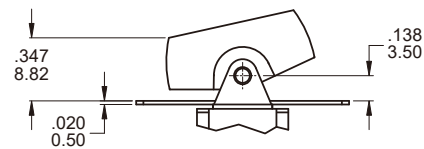
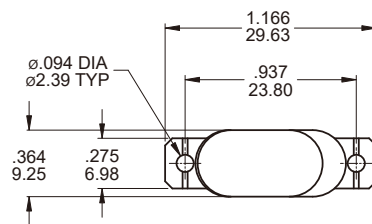
R16



RECOMMENDED MOUNTING

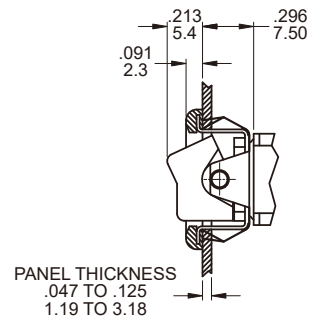
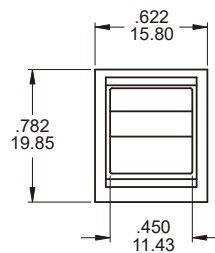


RB

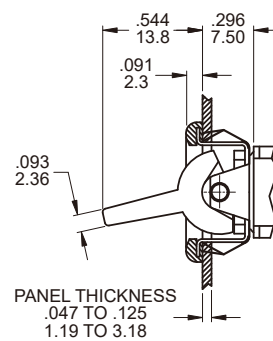
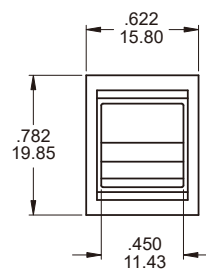


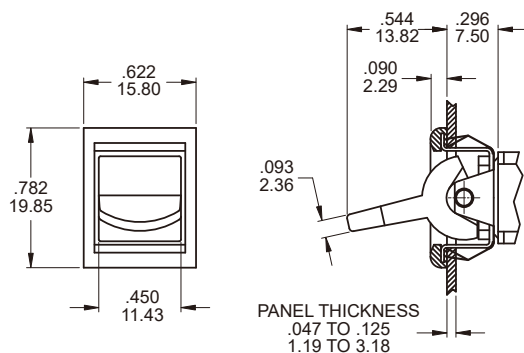
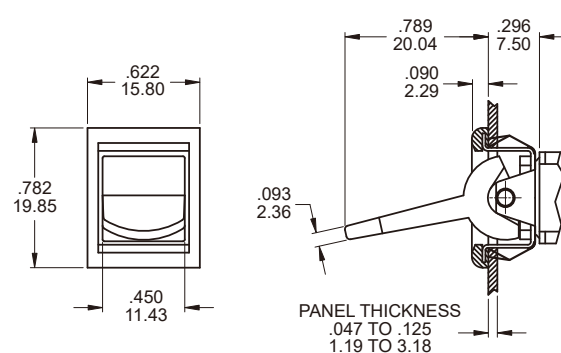
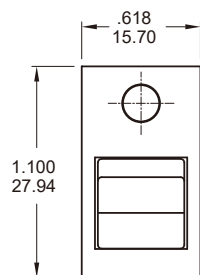
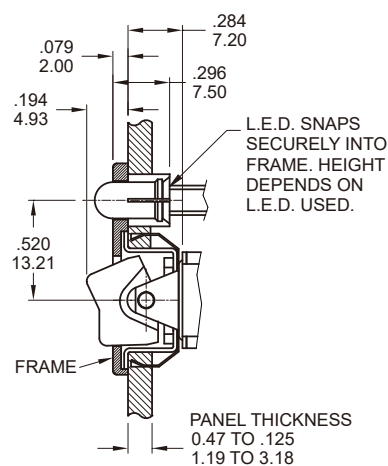
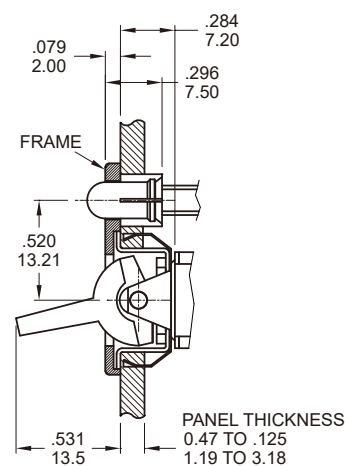
ACTUATOR OPTIONS SNAP-IN FRONT MOUNT

R6



R7



**R8**

**R9**

**R18**

**▲R17**

**▲R18**

**CAP and FRAME colors**

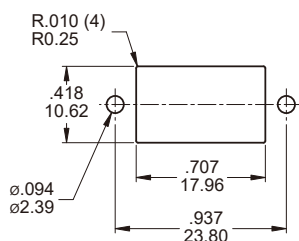
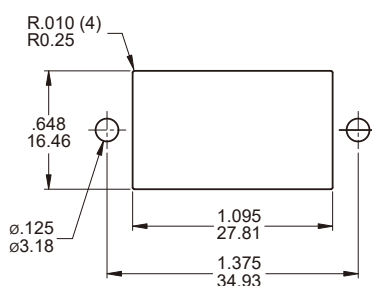
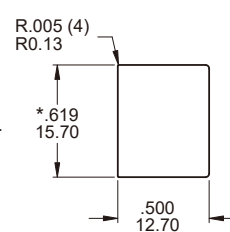
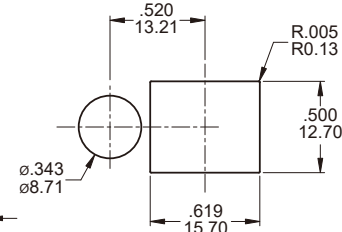
OPTION CODE	COLOR
1	WHITE
2	BLACK (std)
3	RED

**LED colors**

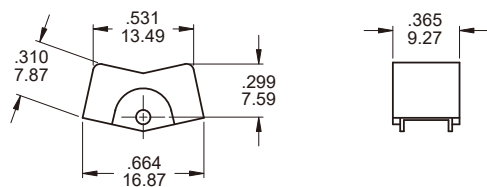
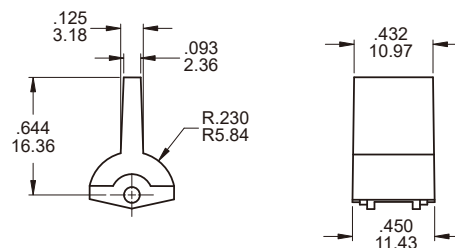
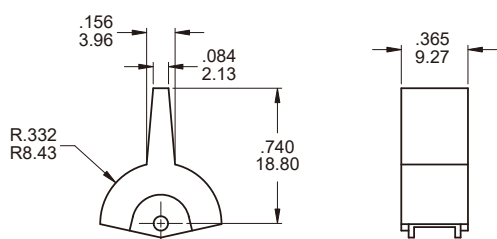
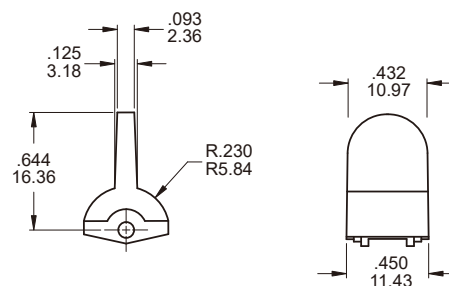
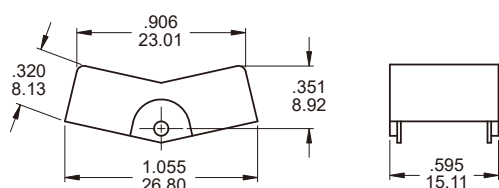
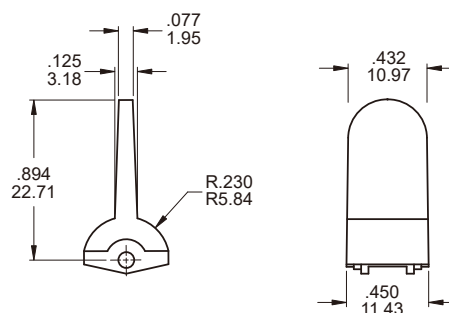
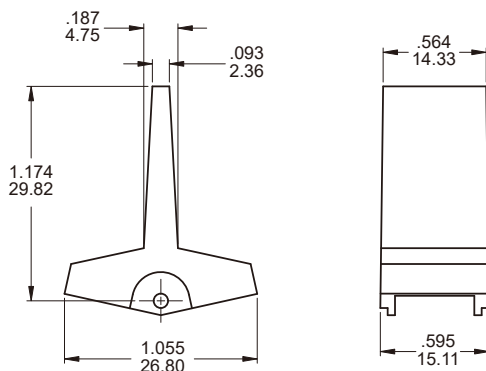
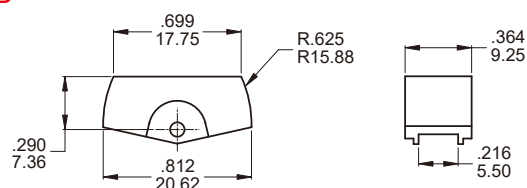
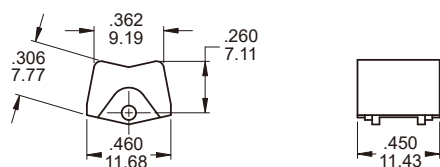
OPTION CODE	COLOR
R	RED (std)
O	ORANGE
G	GREEN

\* Besides standard color, other colors need to check stocks available.

## PANEL MOUNTING

**For R1-R2**

**For R3-R4**

**For R6-R9**

**For R17-R18**


\* For R6 and R7: Increase this dim. to .620/.625 (15.75/15.88) for .060/.125 (1.52/3.18) thk. panels.  
 \* For R8 and R9: Increase this dim. to .620/.625 (15.75/15.88) for .091/.125 (2.31/3.18) thk. panels.

**ACTUATOR OPTIONS FOR P.C. MOUNT ONLY**
**J1**

**J6**

**J2**

**J7**

**J3**

**J8**

**J4**

**JB**

**J5**

**Actuator colors:**

ITEM NO	COLOR
1	White
2	Black ( Std )
3	Red
4	Orange
5	Yellow
6	Green
7	Blue
8	Brown
9	Gray

\* Besides standard color, other colors need to check stocks available.