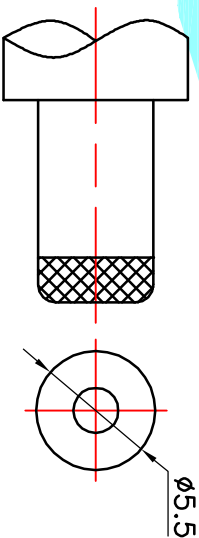
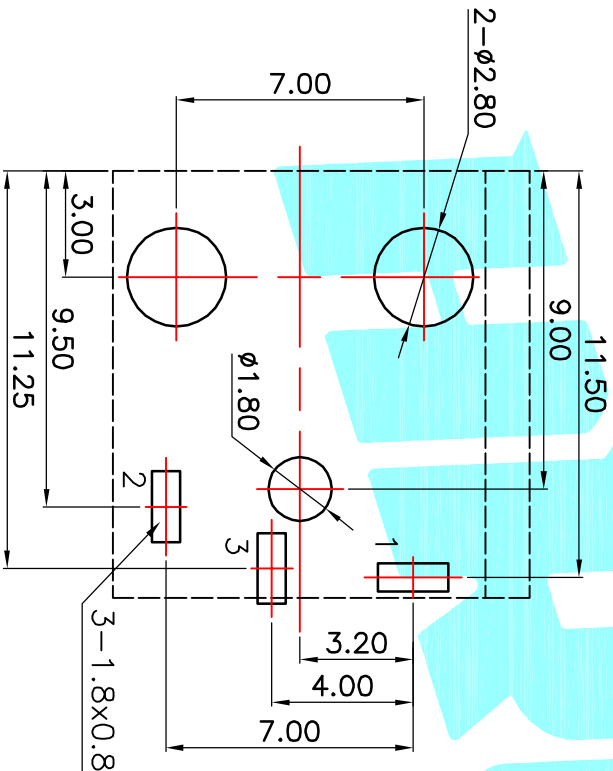


CIRCUIT DIAGRAM

| | | |
|-----------|------------|------------|
| Model No. | 1 | 2 |
| PIN | $\phi 2.0$ | $\phi 2.5$ |

P.C.B LAYOUT(Copper-side view)



DC MATE PLUG

Rating:0.5A 30V DC
Contact Resistance:100 m Ω Max.
Operating temperature:-20 $^{\circ}$ C~70 $^{\circ}$ C
Operating force:3~20N
Operating Life:5,000cycles

| | | | | | | |
|----------------|------|---------------|--------------|--------------------|-------------|--------------|
| ECN NO. | REV. | DATE. | DESCRIPTION. | CHANGE. | CHECK. | APPRO. |
| | A | | NEW | | | |
| APPROVALS | | | | | | |
| DRAWN | | J.X.Zhang | 2013/11/11 | TITLE: PHONE JACKS | | |
| CHECKED | | | | PART NO. DC-004A | | |
| APPROVALS | | | | SCALE: 1:1 | | |
| TOLERANCES ARE | | 30 \pm 0.1 | \pm 0.30 | ANGLE | UNIT: mm | PROJ. |
| | | 10 \pm 0.10 | \pm 0.20 | | | |
| | | 5 \pm 0.10 | \pm 0.15 | \pm 2 $^{\circ}$ | DRAWING NO. | SHEET 1 OF 1 |
| | | \sim 5 | \pm 0.10 | | | |