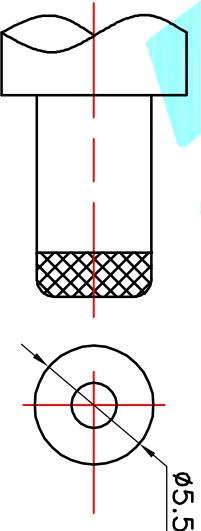
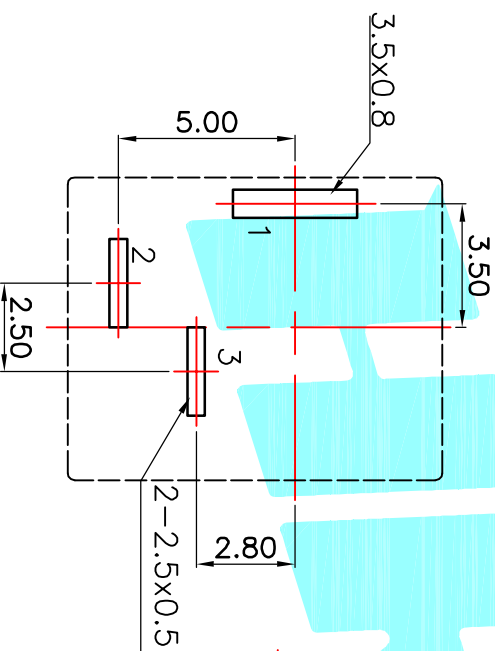
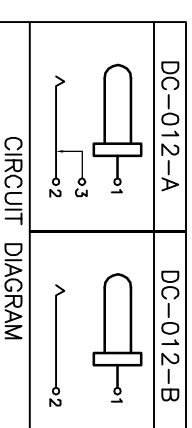


P.C.B LAYOUT(Copper-side view)



Model No.	1	2	3
PIN	ø2.0	ø2.35	ø2.5



Rating:0.5A 30V DC
Contact Resistance:100 mΩ Max.
Operating temperature:−20℃~70℃
Operating force:3–20N
Operating Life:5,000cycles

[illegible]