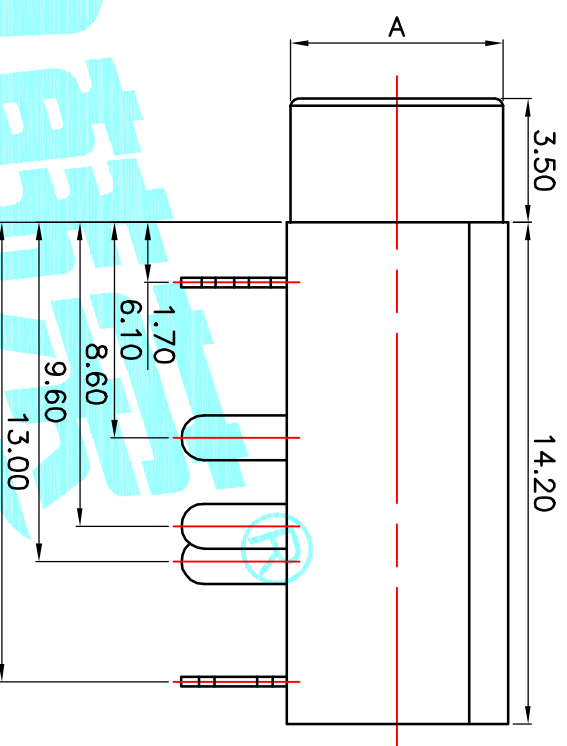
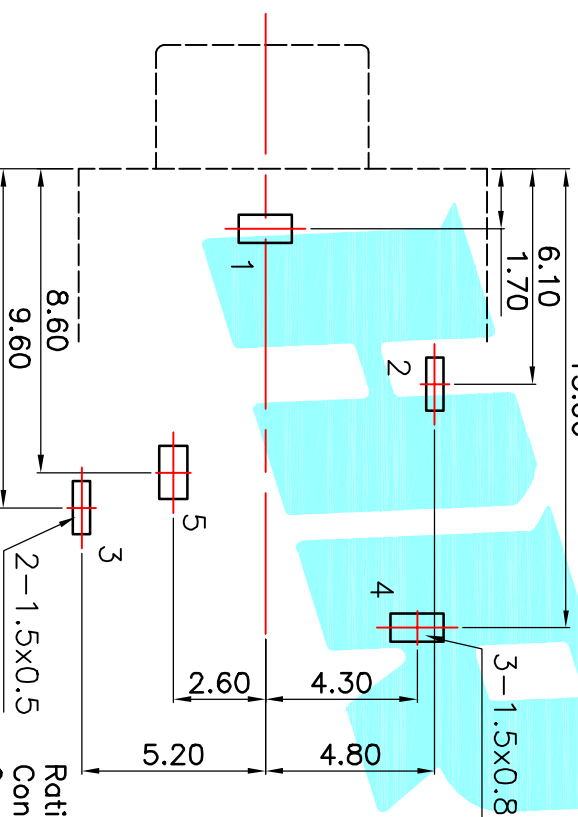
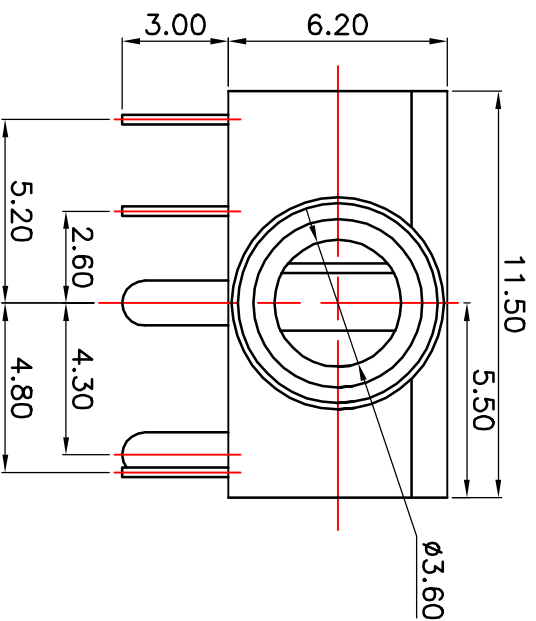


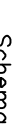




**ROHS**



Model No.	A=∅6 A=M6xPO.5	PJ-3240-A	PJ-3240-B	PJ-3240-C
		PJ-3240M-A	PJ-3240M-B	PJ-3240M-C
Schematic				

Model No.	A=ø6	PJ-3240-D	PJ-3240-E
	A=M6xPO.5	PJ-3240M-D	PJ-3240M-E
Schematic			

Rating:0.5A 30V DC  
Contact Resistance:100 mΩ Max.  
Operating temperature:−20℃~70℃  
Operating force:3~20N  
Operating Life:5,000cycles

[illegible]