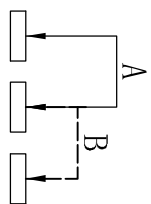
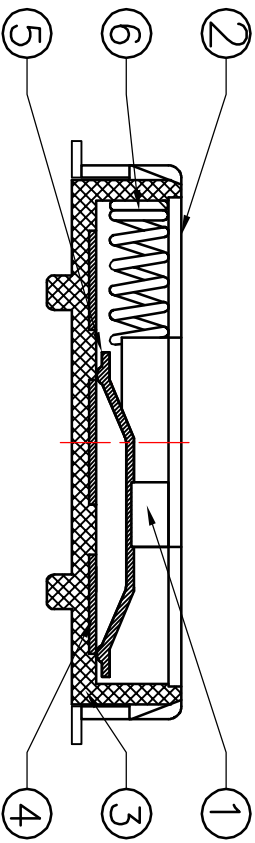


Note:
1. Operating force: 250±100gf
2. Travel: 2.70mm

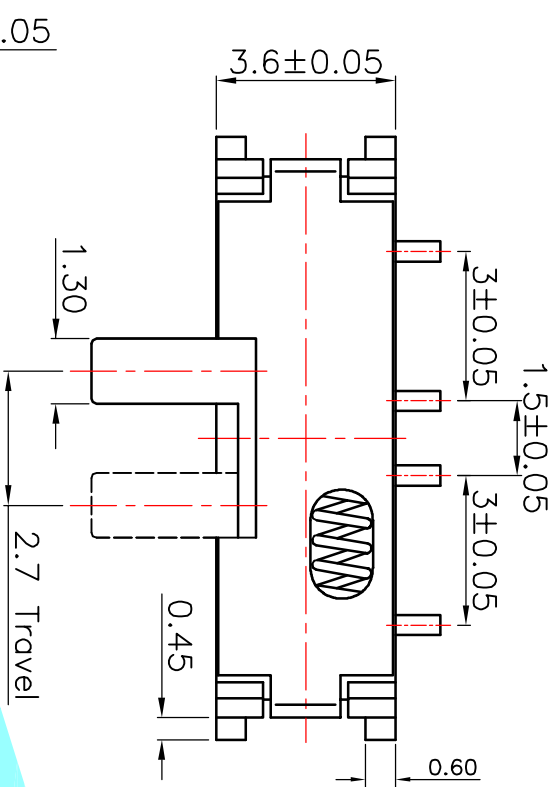


Circuit Diagram

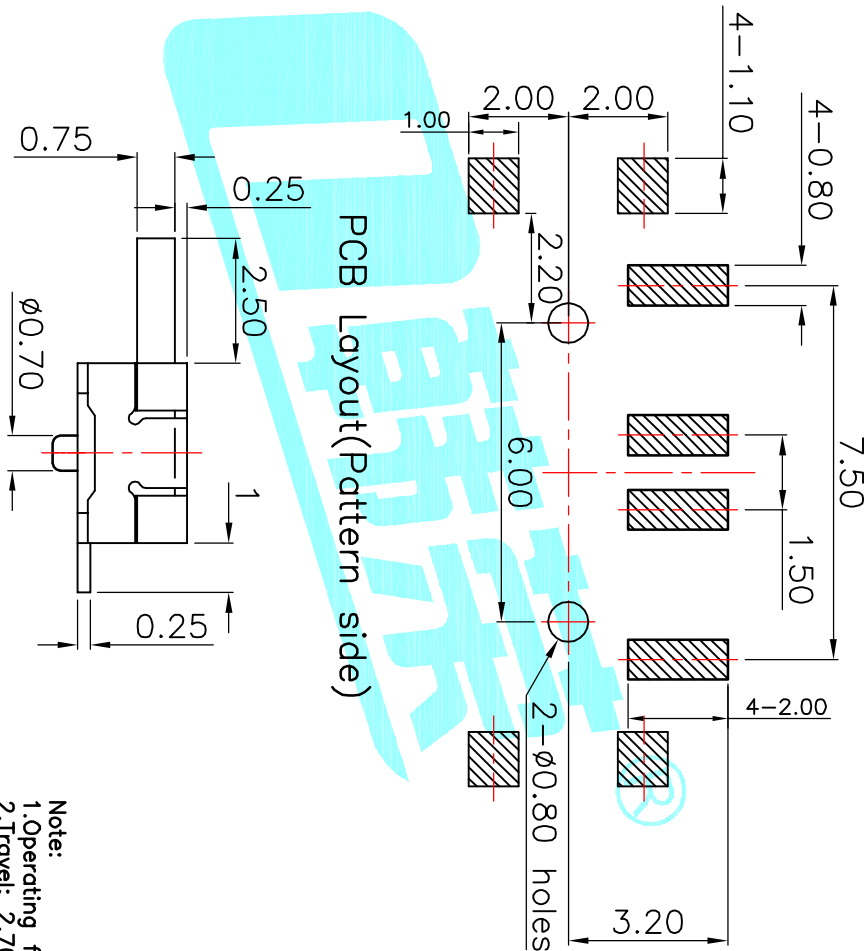
ITEM	PART NAME	TER'NO.	QTY.	MATERIAL	FINISHING	REMARK
⑥	Spring Plate	—	1	SUS	Natural	—
⑤	Contact Spring	—	1	Phosphor Bronze	Ag Plated	—
④	Terminal	—	3	Brass Strip	Ag Plated	—
③	Base	—	1	NYLON	Black	—
②	Cover	—	1	SUS	Natural	—
①	Knob	—	1	LCP	Black	—

APPROVALS	DATE	TITLE
DRAWN J.X.Zhang	2013/10/10	ELECTRONICS CO.,LTD

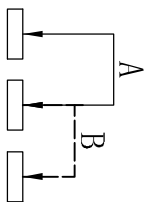
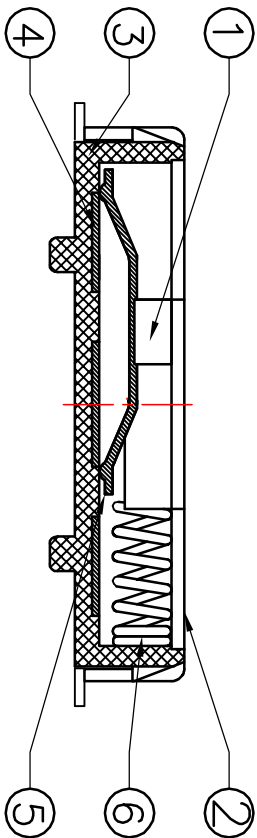
ECN NO.	REV.	DATE.	DESCRIPTION.	CHANGE.	CHECK.	APPRO.
	A		NEW			
TOLERANCES ARE						
			30°±0.1°	±0.30	ANGLE	PART NO.
			10~30	±0.20		UNIT: mm
			5~10	±0.15		SCALE: 1:1
			~5	±0.10	±2°	DRAWING NO.
						SHEET 1 OF 1



PCB Layout(Pattern side)



Note:
1. Operating force: 250±100gf
2. Travel: 2.70mm

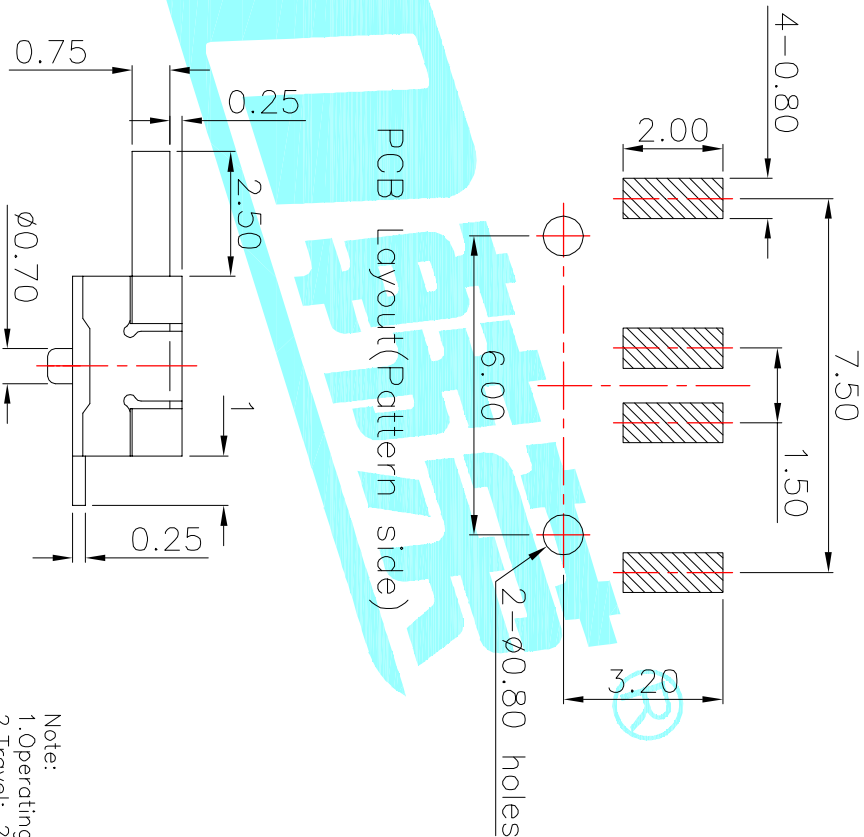
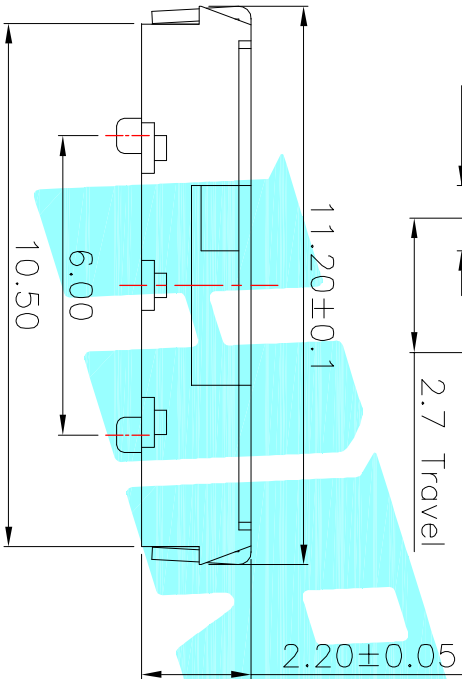
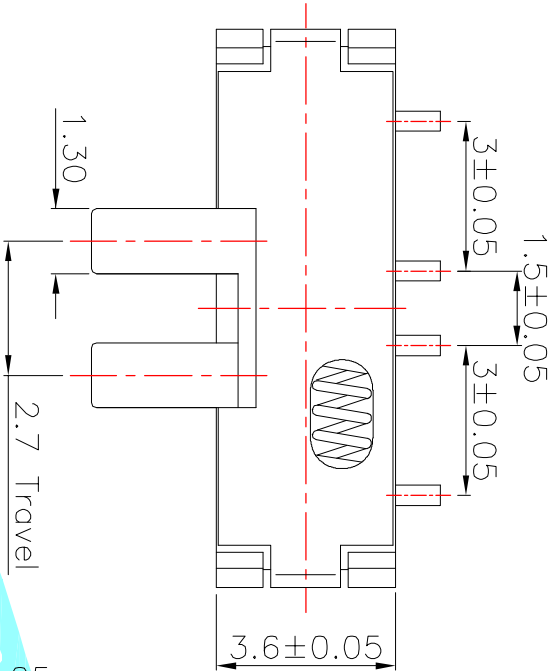


Circuit Diagram

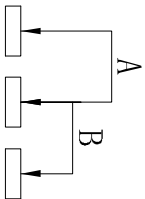
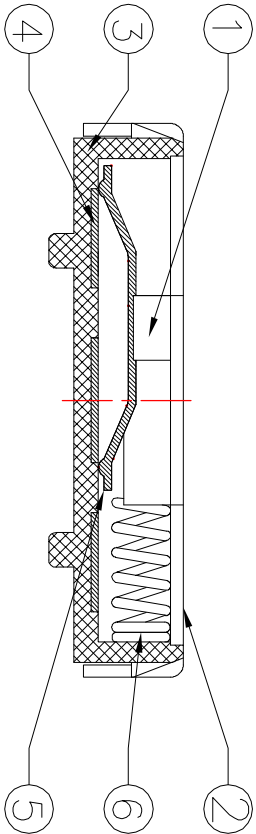
ITEM	PART NAME	TER'NO.	QTY.	MATERIAL	FINISHING	REMARK
⑥	Spring Plate	—	1	SUS	Natural	—
⑤	Contact Spring	—	1	Phosphor Bronze	Ag Plated	—
④	Terminal	—	3	Brass Strip	Ag Plated	—
③	Base	—	1	NYLON	Black	—
②	Cover	—	1	SUS	Natural	—
①	Knob	—	1	LCP	Black	—

APPROVALS	DATE	TITLE
DRAWN J.X.Zhang	2013/10/10	ELECTRONICS CO.,LTD

ECN NO.	REV.	DATE.	DESCRIPTION.	CHANGE.	CHECK.	APPRO.
	A		NEW			
TOLERANCES ARE			30°±0.1°	±0.30	ANGLE	PART NO.
			10~30	±0.20		UNIT: mm
			5~10	±0.15		SCALE: 1:1
			~5	±0.10	±2°	DRAWING NO.
						SHEET 1 OF 1




Note:
1. Operating force: 250±100gf
2. Travel: 2.70mm

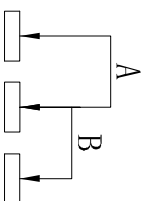
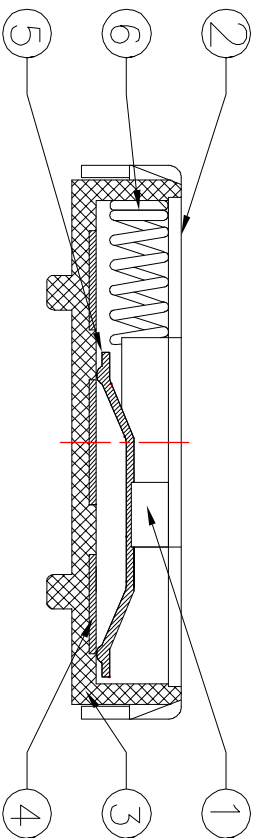
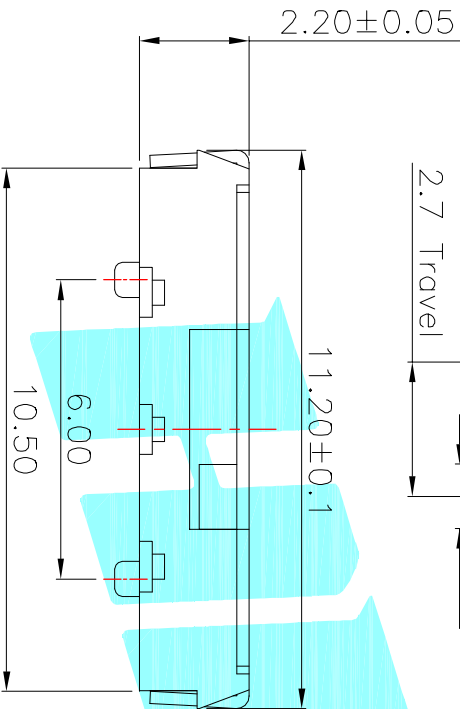
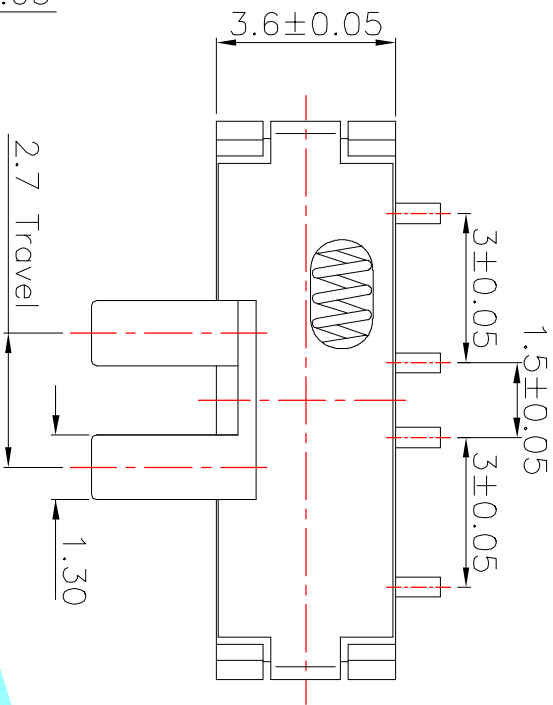


Circuit Diagram

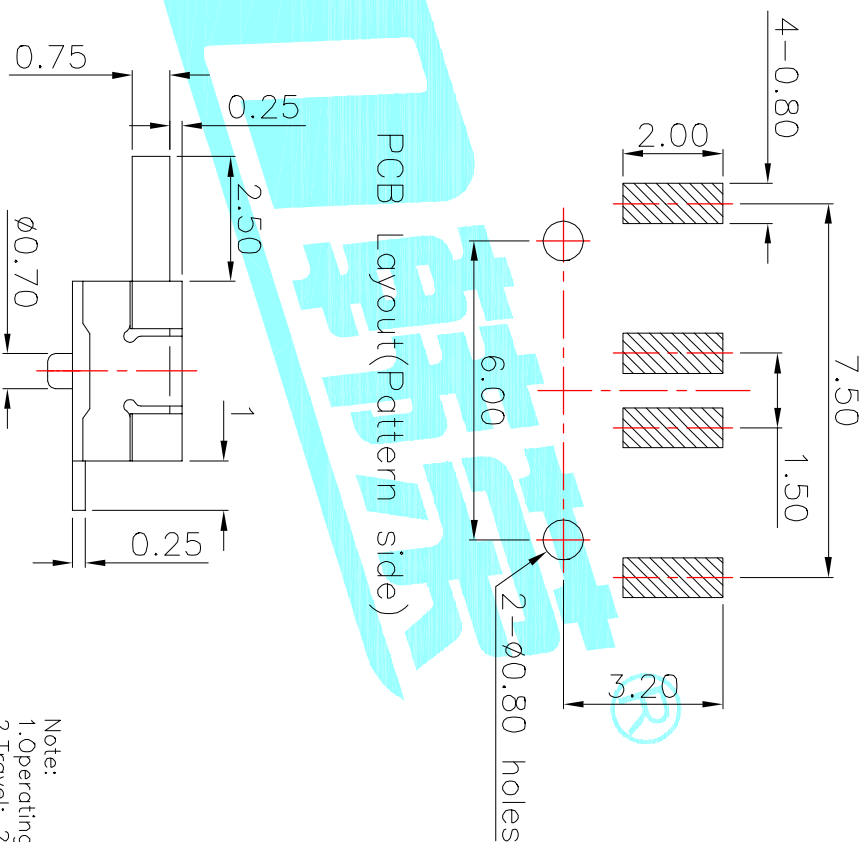
ITEM	PART NAME	TER'NO.	QTY.	MATERIAL	FINISHING	REMARK
⑥	Spring Plate	—	1	SUS	Natural	—
⑤	Contact Spring	—	1	Phosphor Bronze	Ag Plated	—
④	Terminal	—	3	Brass Strip	Ag Plated	—
③	Base	—	1	NYLON	Black	—
②	Cover	—	1	SUS	Natural	—
①	Knob	—	1	LCP	Black	—

APPROVALS		DATE	ELECTRONICS CO.,LTD	
DRAWN	J.X.Zhang	2013/10/10		

						CHECKED		TITLE:		TOGGLE SWITCHES	
						APPROVALS		PART NO.		K3-1391L-R1	
						TOLERANCES ARE		30~12.5 10~30 5~10 ~5		±0.30 ±0.20 ±0.15 ±0.10	
								ANGLE		±2°	
ECN NO.		REV.		DATE.		DESCRIPTION.		CHANGE.		CHECK.	
		A				NEW					
								UNIT: mm		SCALE: 1:1	
								DRAWING NO.		PROJ. 	
										SHEET 1 OF 1	



Circuit Diagram



Note:
1. Operating force: 250±100gf
2. Travel: 2.70mm

ITEM	PART NAME	TER'NO.	QTY.	MATERIAL	FINISHING	REMARK
⑥	Spring Plate	—	1	SUS	Natural	—
⑤	Contact Spring	—	1	Phosphor Bronze	Ag Plated	—
④	Terminal	—	3	Brass Strip	Ag Plated	—
③	Base	—	1	NYLON	Black	—
②	Cover	—	1	SUS	Natural	—
①	Knob	—	1	LCP	Black	—

APPROVALS		DATE	ELECTRONICS CO.,LTD	
DRAWN	J.X.Zhang	2013/10/10		

CHECKED		TITLE:		TOGGLE SWITCHES	
APPROVALS		PART NO.		K3-1391R-R1	
TOLERANCES ARE		UNIT: mm		SCALE: 1:1	
30~12.5		±0.30		PROJ. ①	
10~30		±0.20		SHEET 1 OF 1	
5~10		±0.15			
~5		±0.10			
		ANGLE			
		±2°			
		DRAWING NO.			

ECN NO.	REV.	DATE.	DESCRIPTION.			CHANGE.	CHECK.	APPRO.
	A		NEW					