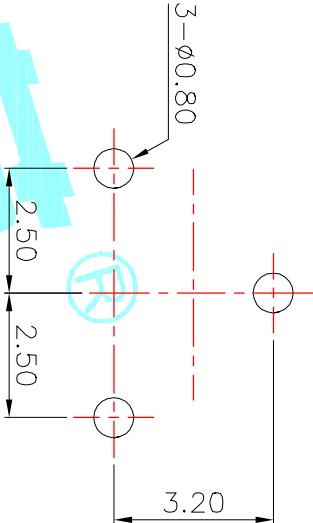
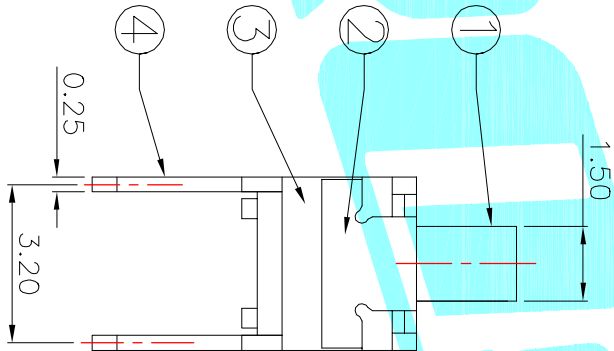
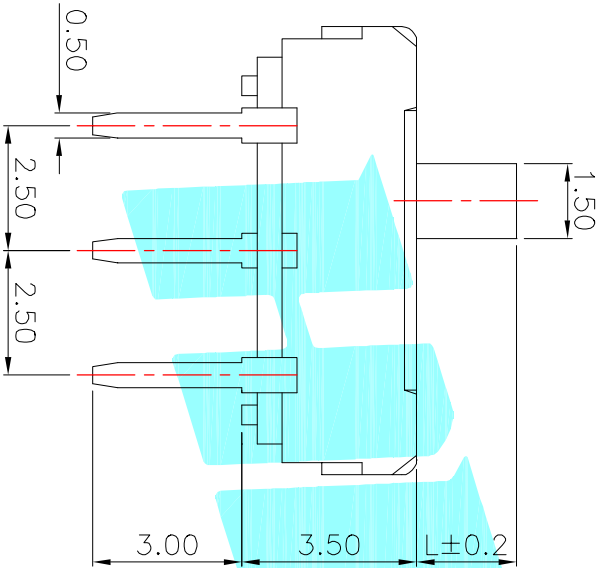


CIRCUIT DIAGRAM
C : COMMON PIN



HOLE LAYOUT



PART NO.		L	Operating force
K3-1235D-F1		2	200±100gf
K3-1235D-K1		3	
K3-1235D-L1		4	

⑤	Contact Spring	—	2	Beryllium copper	Ag Plated	—
④	Terminal	—	3	Brass Strip	Ag Plated	—
③	Base	—	1	NYLON	Black	—
②	Cover	—	1	SUS	Natural	—
①	Knob	—	1	NYLON	Black	—
ITEM	PART NAME	TER'NO.	QTY.	MATERIAL	FINISHING	REMARK

APPROVALS		DATE	H300ELECTRONICS CO.,LTD			
DRAWN		J.X.Zhang	2013/9/16	ELECTRONICS CO.,LTD		
CHECKED		TITLE:		TOGGLE SWITCHES		
APPROVALS		PART NO.		K3-1235D		
TOLERANCES ARE		30~12.5 ±0.30	±0.30	ANGLE	UNIT: mm	SCALE: 1:1
		10~30 ±0.20	±0.20			PROJ. 1 OF 1
		5~10 ±0.15	±0.15			
		~5 ±0.10	±0.10			
			±2°	DRAWING NO.		
ECN NO.	REV.	DATE.	NEW			
	A		DESCRIPTION.			
			CHANGE.	CHECK.	APPRO.	