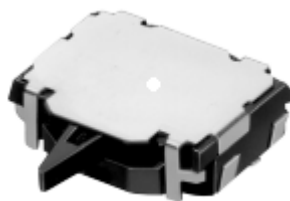


DETECTOR SWITCH

Detector switch

MODEL NO.
SSCM Series



Features/Benefits

Compact detector switch with smooth switching action.

Available in a wide variety of mounting methods, operating methods, etc.

Applications

For detecting the insertion of media.

DVD players, CD ROMs and FDDs.

Mini component stereos, CD players

Laser printer

Main Specifications

Electrical

Rating : 0.1A 5V DC

Contact Resistance: 2 Ω max.

Operating temperature: -10°C ~ 60°C

Operating Force : 0.35N max.

Operating Life : 50,000 Cycles

Subsidiary Production Code

Code number	Operating direction	Guide Boss	Drawing
SSCM	Horizontal	With	2

Packing Specification

Quantity(unit: pcs)	Pitch (unit: mm)	Remark
3000		

No.	3D	P.C.B pattern dimensions	Circuit Diagram
1	SPVL		
	<p>The technical drawing illustrates the mechanical specifications of a switch assembly. It includes three main views: a top view, a side view, and a detail view of the contact mechanism.</p> <p>Top View: Shows the overall footprint of the switch. Key dimensions include a total width of 5.00, a central width of 2.32, and a total height of 2.09. The distance from the center to the terminal is 1.67. A 21.9° angle is specified for the contact tip, with a radius of R0.1. The contact tip width is 1.8. The distance from the center to the ON initial position is 3.58, and the distance to the full stroke position is 3.89. The terminal is labeled "Terminal No. ①". The rotation center is marked as "旋转中心". The frame is labeled "Frame".</p> <p>Side View: Shows the profile of the switch. The total height is 1.42. The distance from the base to the contact tip is 0.61. The contact tip width is 0.7. The distance from the base to the ON initial position is 1.5. The distance to the full stroke position is 0.4. The contact tip radius is C0.15.</p> <p>Detail View: Shows the contact mechanism. The distance from the center to the contact tip is 2.4. The contact tip width is 0.8. The distance from the center to the ON initial position is 0.8. The distance to the full stroke position is 0.64. The distance from the center to the contact tip is 4.35. The distance from the center to the contact tip is 6.05. The contact tip is labeled "2-ø0.8 holes".</p> <p>Circuit Diagram: Shows the electrical connection. The switch is a single-pole double-throw (SPDT) switch. The common terminal is labeled "(Common)". The two throw terminals are labeled "a" and "b". The terminals are numbered ①, ②, ③, and ④. The connection is shown as ①-④, ②-a, and ③-b.</p>		