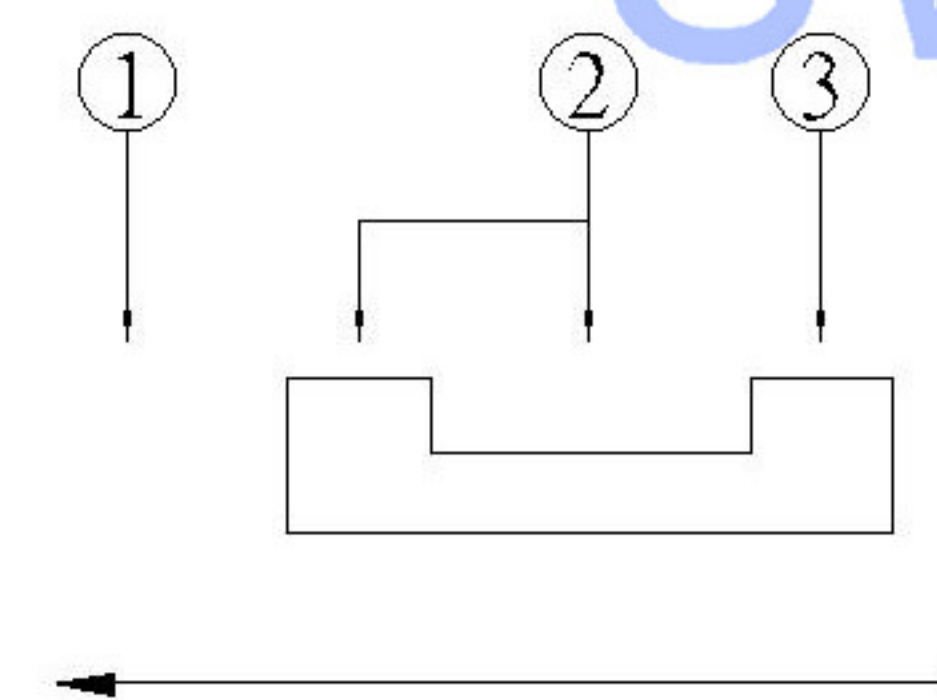
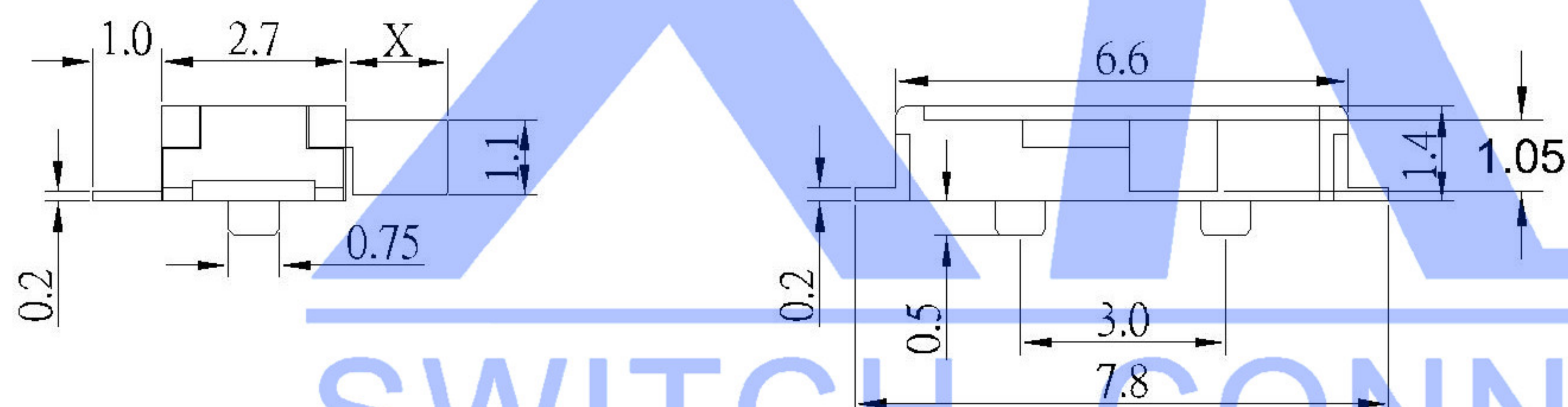
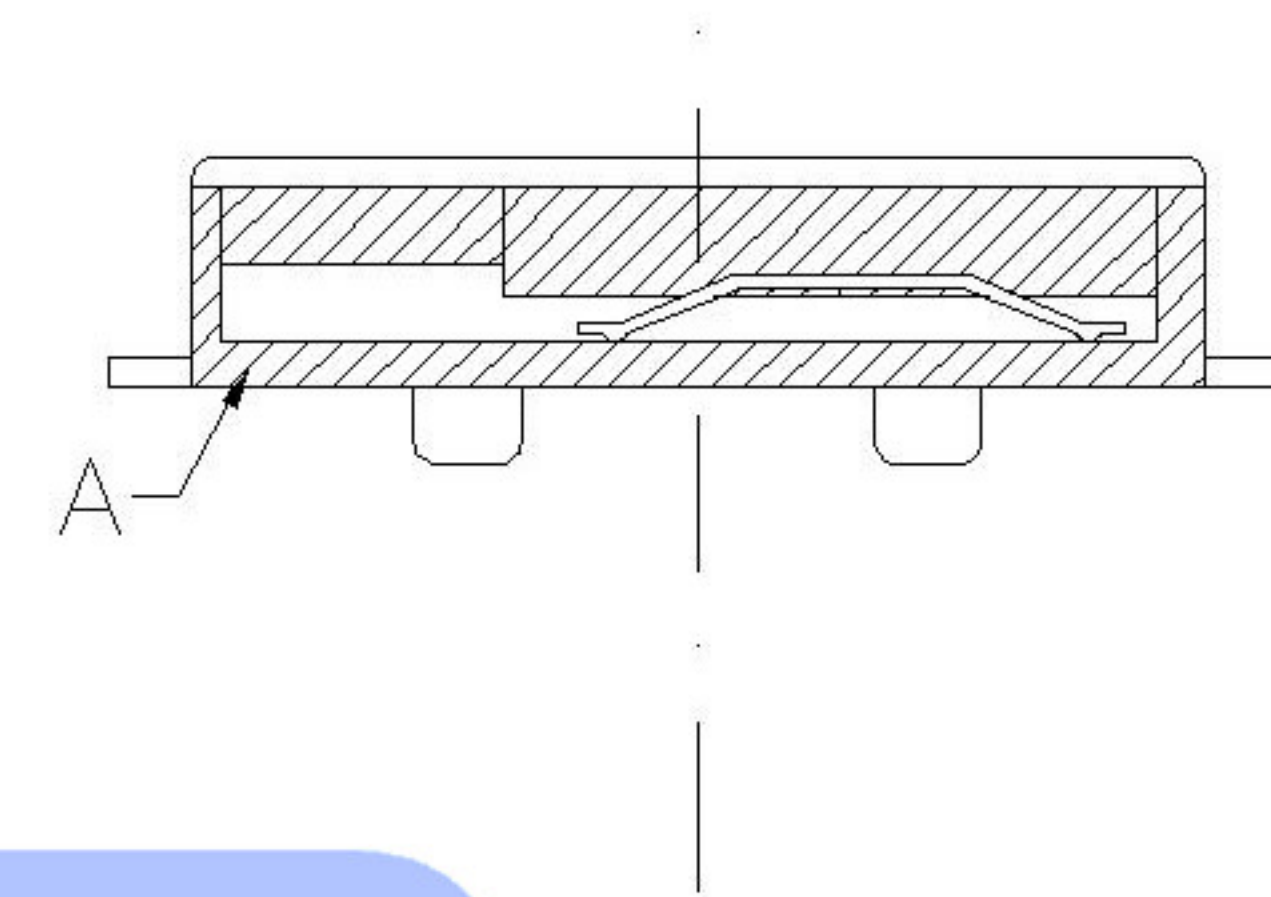


P.C.B LAND PATTERN




CIRCUIT DIAGRAM



PAPT NO	L
SK-3296S-01-L1	1.5
SK-3296S-01-L2	2.0
SK-3296S-01-L3	2.5

NOTE:
Rating: DC 12V 50mA
Operating Force:200±100gf
Lifetime:100,000 Cycles

ITEM	PAPT NAMF	TER.NO	QTY	MATERIAL	FINISHING	REMARK
⑤	Terminal	—	3	Brass (0.30t)	ag Plated	—
④	Contact spring	—	1	Beryllium copper	—	—
③	Base	—	1	LCP	—	—
②	Cover	—	1	SUS	Tin plated	—
①	Keystake	—	1	PA46	—	—

							DSND		DATE		SCALE: N/A	MODEL TYPE: SLIDE SWITCH			
					ANGLAR	±5°	DWN		DATE		VIEW: 	PART NO.:			
△ X					L ≤ 4	±0.2	CHKD		DATE		UNIT: mm	DWG NO.:			
△ X					4<L ≤ 16	±0.3	APPD		DATE		SIZE: A4	SK-3296S-01-X			
△ X					16<L ≤ 63	±0.4									
MARK	DESCRIPTION		DATE	REVISED	APPROVED	L > 63	±0.5	XKB INDUSTRIAL PRECISION CO.,LIMITED					WEIGHT	SHEET	REVISION
REVISIONS							UNSPECIFIED TOLERANCES					1.0g	1/1	A0	
www.xk-dg.cn www.helloxkb.com www.helloxkb.cn															