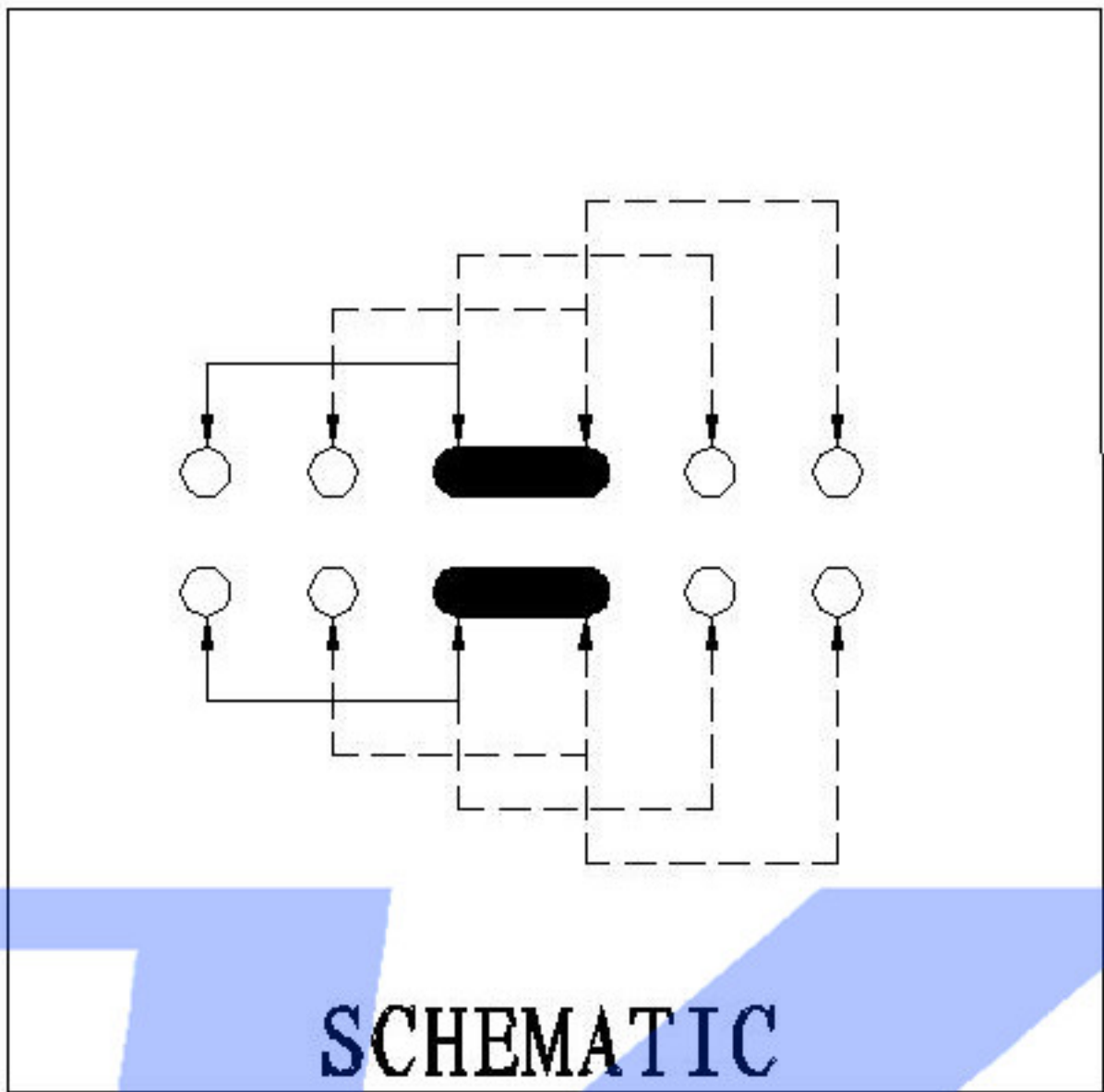
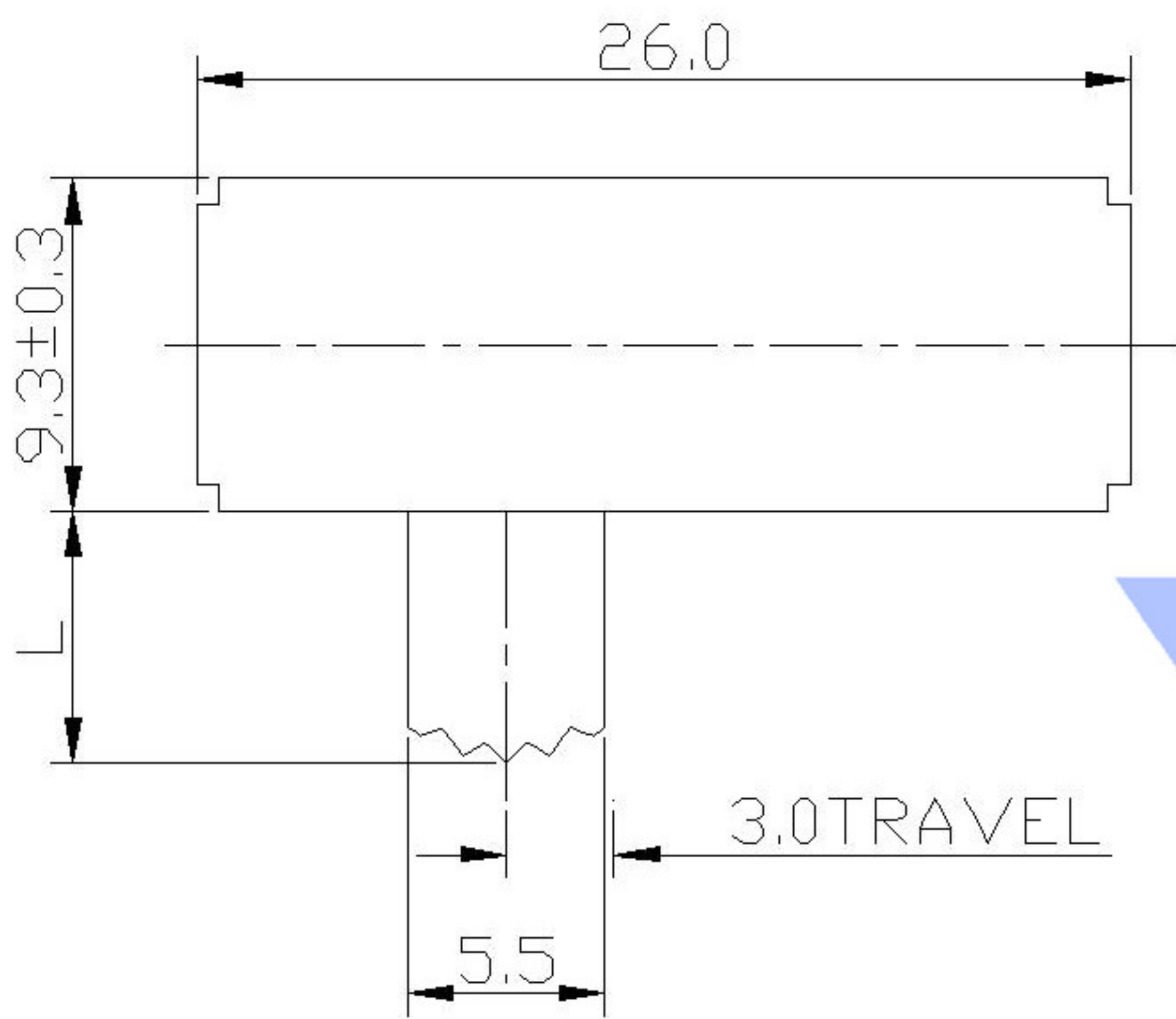


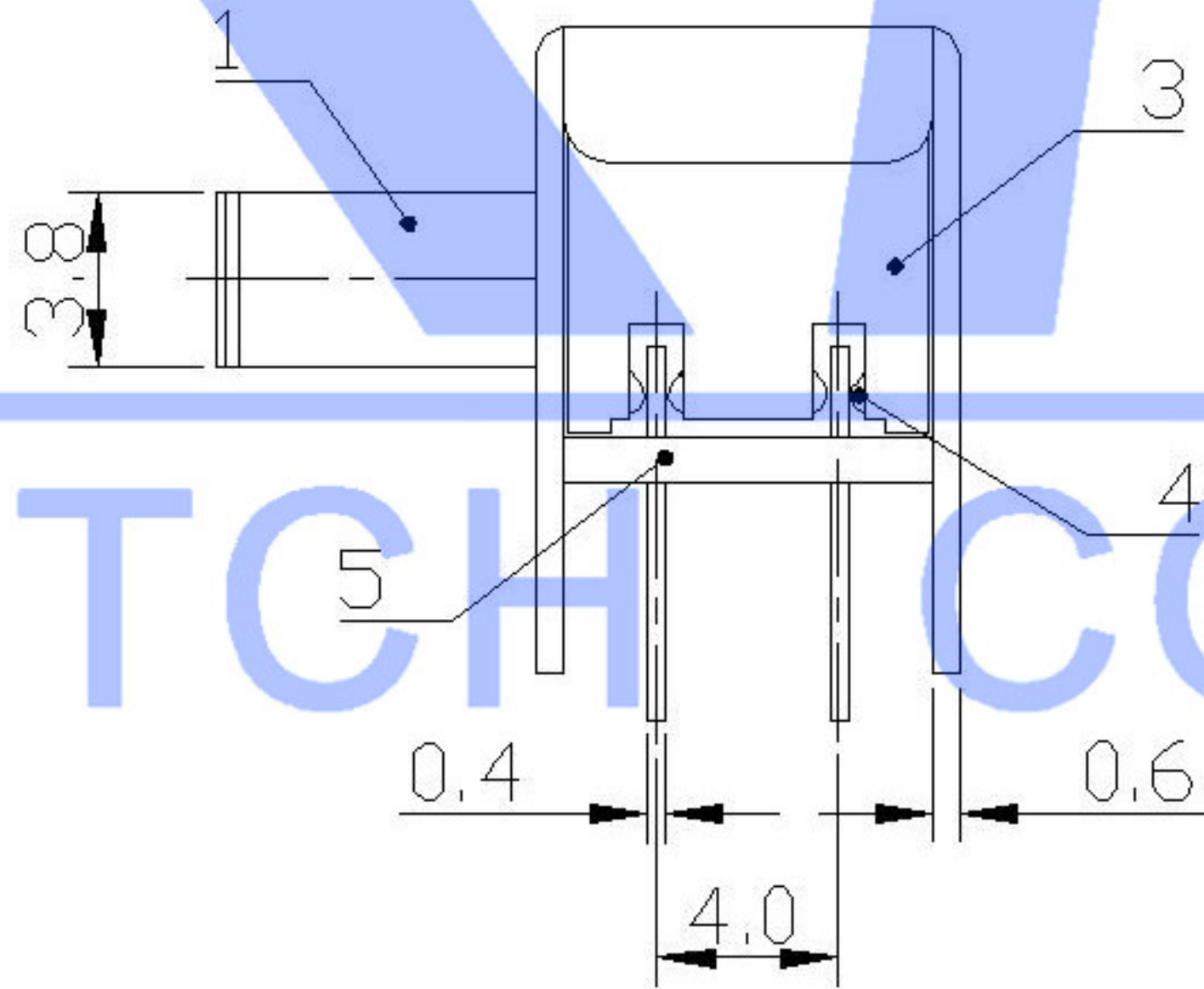
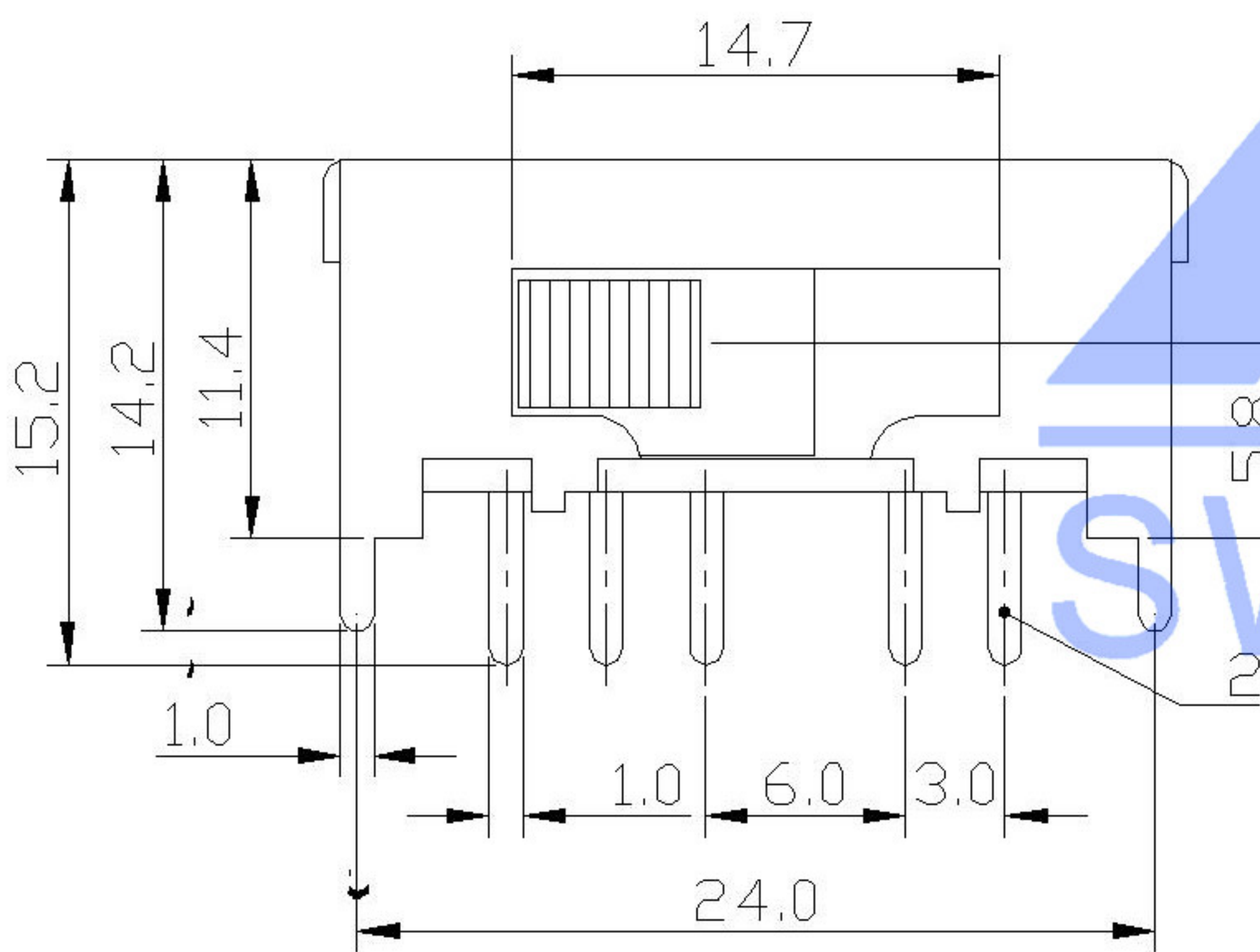
MODEL CODE

SK-24F01 -

L (mm)
~



SCHEMATIC



Knob Type	
GDT	
GMA	
GRC	
MXA	

RATING	0.3A 50V DC
CIRCUIT	1P2T
CONTACT RESISTANCE	100mΩ MAX.
TRAVEL	2mm
OPERATING FORCE	250±100gf
OPERATING LIFE(cycles)	10,000

					ANGULAR	±5°
△ x					L ≤ 4	±0.2
△ x					4 < L ≤ 16	±0.3
△ x					16 < L ≤ 63	±0.4
MARK	DESCRIPTION	DATE	REVISED	APPROVED	L > 63	±0.5
REVISIONS					UNSPECIFIED TOLERANCES	
www.xk-dg.cn www.1k0k.com www.1k0k.cn						

DSND		DATE		SCALE: N/A	MODEL TYPE: SLIDE SWITCH		
DWN		DATE		VIEW:	PART NO.: SK-24F01		
CHKD		DATE		UNIT: mm	DWG NO.: SK-24F01-X-X		
APPD		DATE		SIZE: A4			
XKB INDUSTRIAL PRECISION CO.,LIMITED					WEIGHT	SHEET	REVISION
					1.0g	1/1	A0