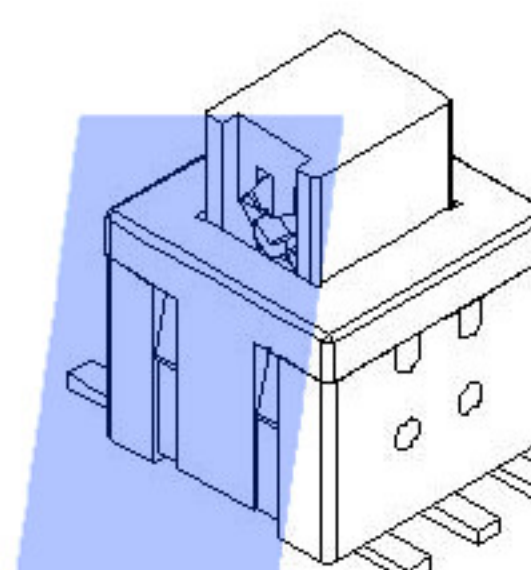
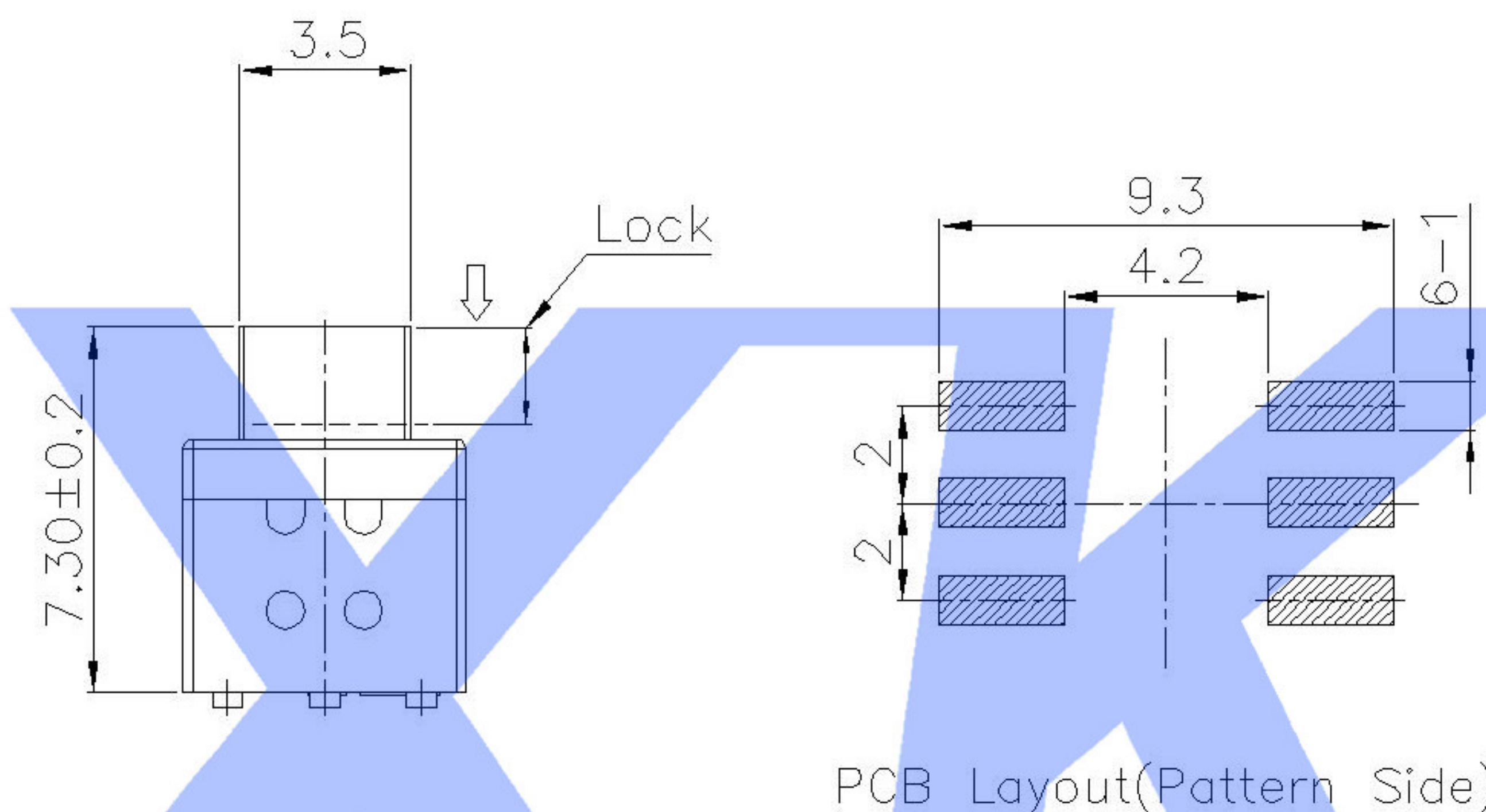
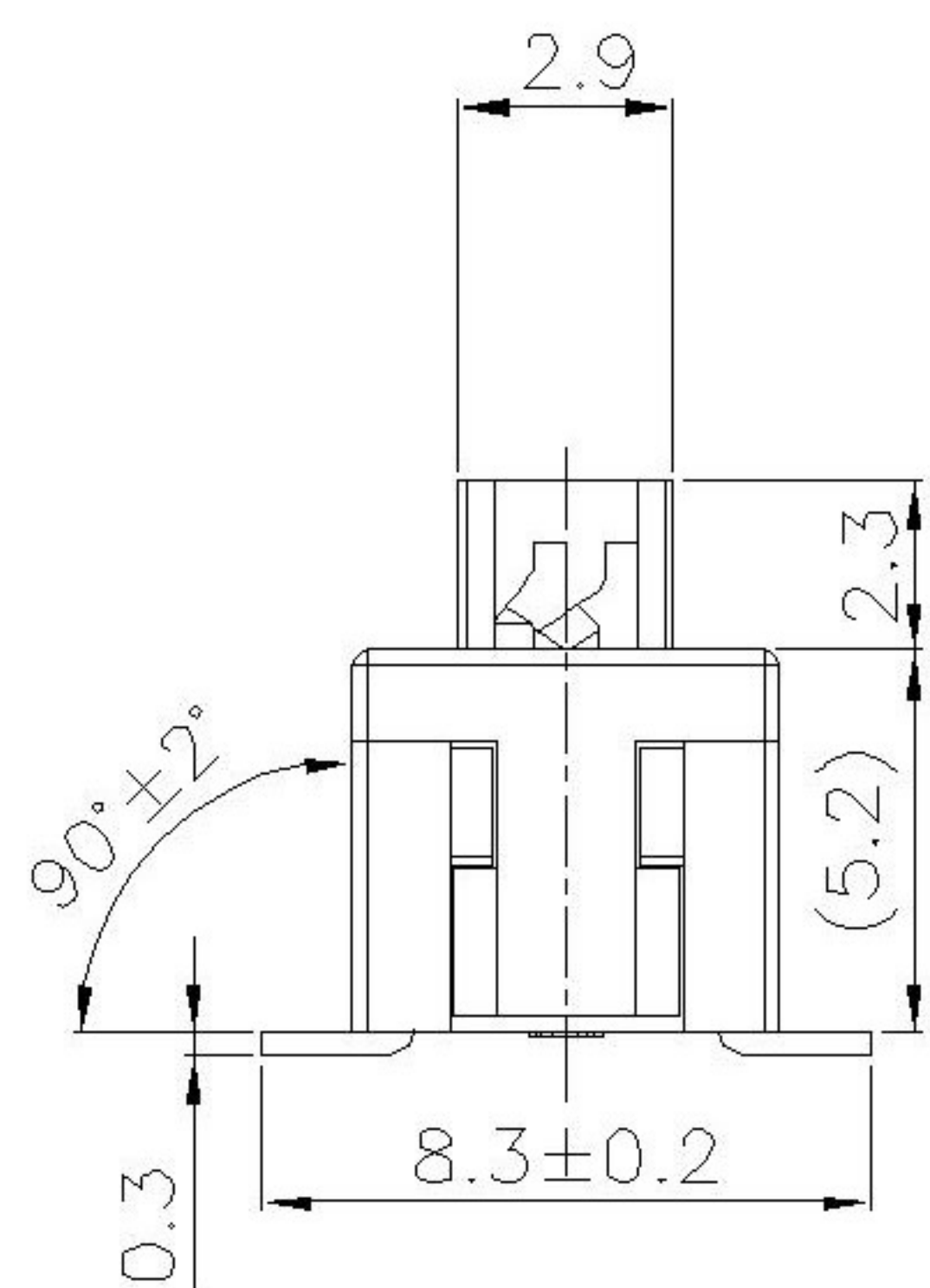
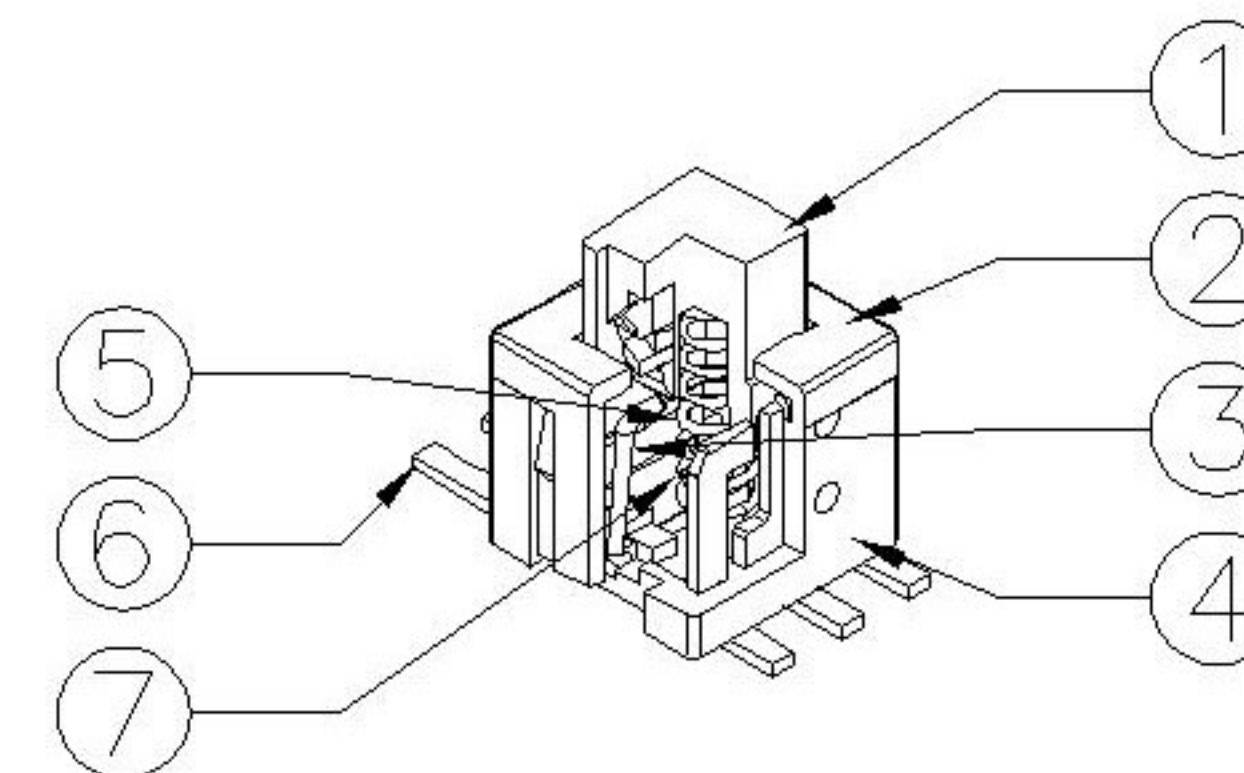


NOTE:
1.Operating Force: 180gf±50gf



FEATURES

- Light operating force.
- Long term low contact resistance.
- Momentary or latching operation.
- Short stroke 1.5mm to latch.
- Compact spacing on PCB of 5.8mm.

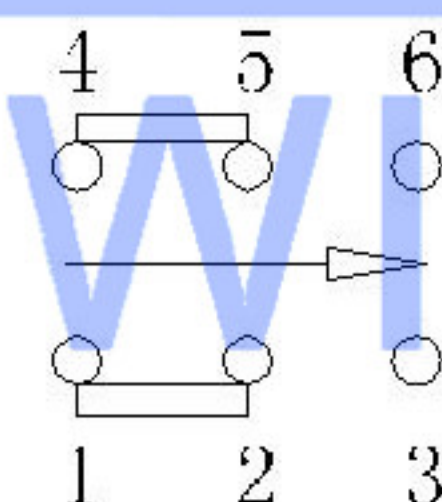
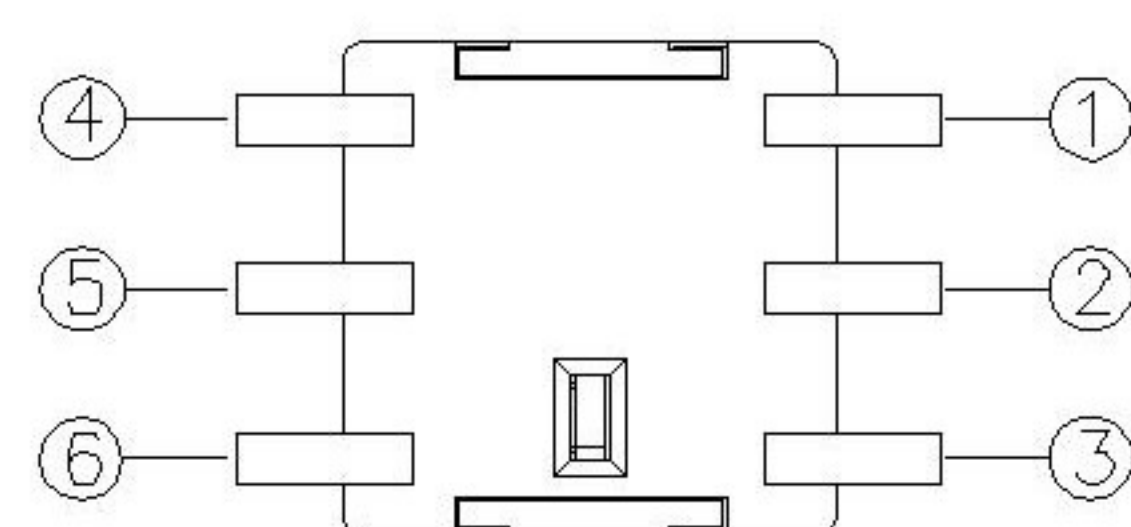
SPECIFICATIONS

1.ELECTRICAL

● Contact rating	0.1A, 30VDC
● Contact resistance	50mWMax.
● Insulation resistance	100MΩMin. at 250VDC
● Dielectric strength	250VAC Min. for 60 sec.

2.MECHANICAL AND ENVIRONMENTAL

● Temperature rating	Operating: -15℃ to +55℃ Storage: -25℃ to +65℃
● Operation force	160±80gf
● Stroke	Lock Stroke: 1.1±0.2mm Full Stroke: 1.9±0.2mm
● Operating life	full load: 1x10 ⁴ cycles no load: 1x10 ⁵ cycles
● Contact form	DPDT



Circuit Diagram

⑦	Contact		2	Phosphor bronze	ag Plated	_____
⑥	Terminal	——	6	Brass strip	ag Plated	_____
⑤	spring	——	1	SUS	Natural	_____
④	Base	——	1	Nylon		_____
③	Crochet Needle	——	1	SUS	Natural	_____
②	Cover	——	1	Nylon		_____
①	Keystake	——	1	Nylon		_____
ITEM	PAPT NAMF	TER.NO	QTY	MATERIAL	FINISHING	REMARK

PAPT NO	XKB5858-X-TP-75
OPERATION	W:NO LOCK Z:LOCK

						DSND		DATE		SCALE: N/A	MODEL TYPE: PUSH SWITCH		
△X						L ≤ 4	±5°			VIEW:	PART NO.: XKB5858		
△X						4 < L ≤ 16	±0.2			UNIT: mm	DWG NO.: XKB5858-X-TP-75		
△X						16 < L ≤ 63	±0.3			SIZE: A4			
MARK	DESCRIPTION	DATE	REVISED	APPROVED		L > 63	±0.4						
REVISIONS						UNSPECIFIED TOLERANCES		XKB INDUSTRIAL PRECISION CO.,LIMITED			WEIGHT	SHEET	REVISION
www.xk-dg.cn www.helloxkb.com www.helloxkb.cn											1.0g	1/1	A0