

SLP8A SERIES

High power switch for operations with dust-proof, market for industrial equipment, telecommunication, security, machine tools, and more.



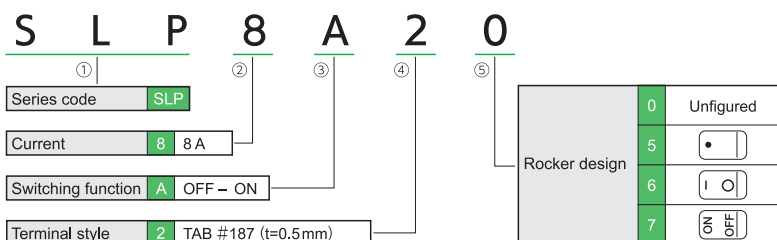
RoHS Compliant

FEATURES

With reconsideration of every structure details, higher performance in various aspects such as following compared to our conventional.

- Long life 50,000 cycles
- High capacity and induction load
- Compact size and Excellent operate feeling
- Greatly improved dust-proof with O ring internally
- Selectable four marking types of switch display
- RoHS compliant

PART NUMBER DESIGNATION



SPECIFICATIONS

Rating	8(8) A 127 V ~ 5E4 4(4) A 250 V ~ 5E4
Initial contact resistance	30 mΩ max. (1A 2~4V DC)
Dielectric strength	1,500 VAC 1 minute
Insulation resistance	100 MΩ min. (500 V DC)
Electrical life (cycles)	50,000 cycles
Operating force	4 ± 2 N
Operating temperature range	-10 ~ +65 °C
Storage temperature range	-25 ~ +80 °C

LIST OF PART NUMBERS

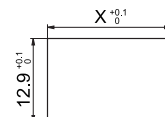
Part No.	Rocker design	SW function	Terminal style
SLP8A20	Unfigured	OFF-ON	TAB #187 (t=0.5mm)
SLP8A25			
SLP8A26			
SLP8A27			

SWITCHING FUNCTION

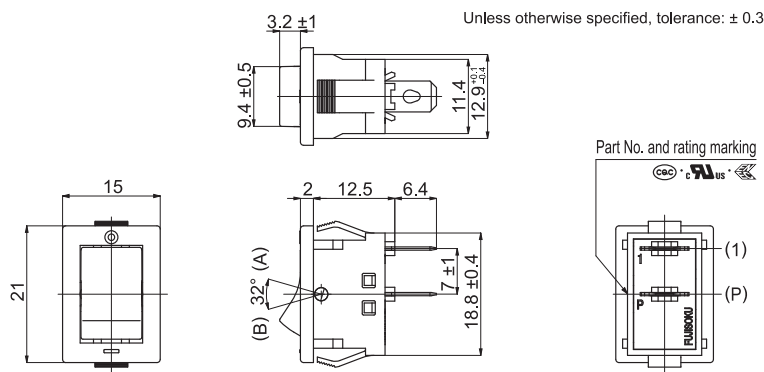
Switching function		
Connecting terminals	Schematic	Number of terminals
A pos. OFF	B pos. ON	 2
—	P-1	

PANEL CUT-OUT DIMENSIONS (Unit: mm)

Panel thickness	X
0.75 ~ 1.25	19.2
1.25 ~ 2.50	19.4



OUTLINE DIMENSIONS (Unit: mm)



NIDEC COPAL ELECTRONICS CORP. (Head Office)

7-5-25 Nishi-Shinjuku, Shinjuku-ku, Tokyo 160-0023 JAPAN
Phone: +81-3-3364-7055 Fax: +81-3-3364-7098

NIDEC COPAL ELECTRONICS, INC.

367 Van Ness Way, Suite 601
Torrance, CA 90501 U.S.A
Phone: +1-310-618-0225 Fax: +1-310-618-9984

NIDEC COPAL ELECTRONICS (SHANGHAI) CO., LTD.

Unit A, 4/F, No.4 Bldg., No.253, Ai Du Rd., Wai Gao Qiao
Free Trade Zone, Shanghai 200131, CHINA
Phone: +86-21-5046-3009 Fax: +86-21-5046-3115

NIDEC COPAL ELECTRONICS (TAIWAN) CO., LTD.

18F-1, No.57, Sec.2, Tun Hwa S.Rd., Taipei 106, TAIWAN
Phone: +886-2-27030577 Fax: +886-2-27010577

■ Specifications are subject to change without notice.

<https://www.nidec-copal-electronics.com>

NIDEC COPAL ELECTRONICS GmbH

Mergenthalerallee 79-81
65760 Eschborn GERMANY
Phone: +49-6196-92775-0 Fax: +49-6196-92775-75

NIDEC COPAL ELECTRONICS KOREA CORP.

C- 406, Woolim Lion's Valley 168, Gasan digital,
Geumcheon-gu, Seoul, 08507, KOREA
Phone: +82-2-3482-5861 Fax: +82-2-3482-5860

NIDEC COPAL ELECTRONICS SINGAPORE PTE. LTD.

180B Bencoolen Street #07-05 The Bencoolen Singapore 189648
Phone: +65-6535-0056 Fax: +65-6535-0087

201812E0000