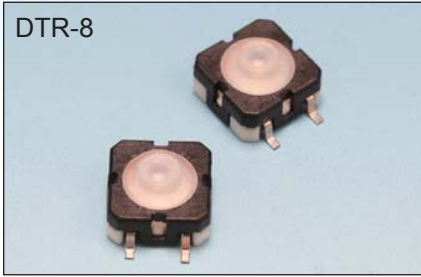
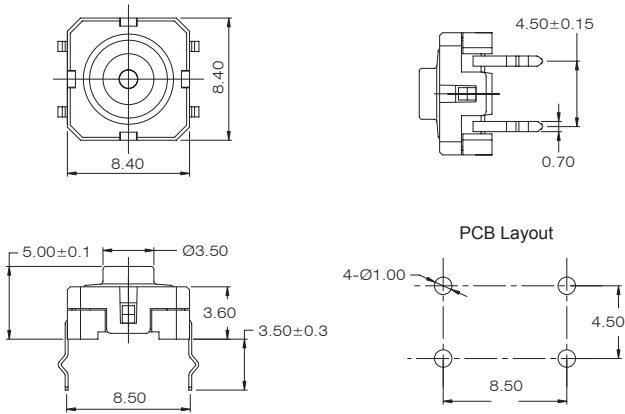


DTR-8

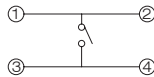


SPECIFICATIONS

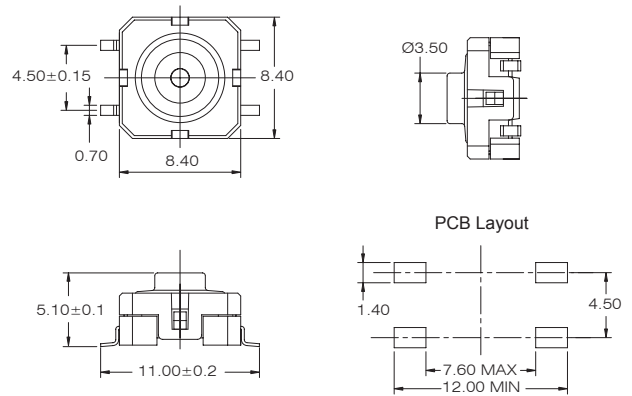
CONTACT RATING: AC/DC 42 V, 100mA
 MECHANICAL LIFE: 1,000,000 cycles
 CONTACT RESISTANCE: 100mΩ max.(initial)
 INSULATION RESISTANCE: 1,000MΩ min. 100VDC
 DIELECTRIC STRENGTH: 250VAC/1 min.
 OPERATING TEMPERATURE: -40°C to +80°C



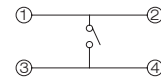
Circuit diagram



DTR-8-7-C



Circuit diagram



DTR-8-7-M

HOW TO ORDER

DTR - ☐ - ☐ - ☐ - ☐ - ☐ - ☐ - ☐ - ☐ - RoHS code:

DUSTPROOF TACT SWITCH

SIZE: 8 = 8.4x8.4

OPERATION FORCE: 7: 250 gf

HEIGHT: ☐ = 5.00mm, 1 = 6.60mm

TERMINAL: C: P.C TYPE, C1: P.C TYPE, M: SMT TYPE

CAP: Plunger: ☐ = without plunger, T1: (Total height 9.75), T2: (Total height 12.55)

PACKAGE: ☐ = standard: Tube, T/R = Tape & Reel

H = RoHS Compliant