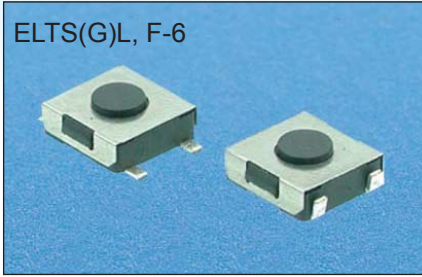


ELTS(G)L, F-6

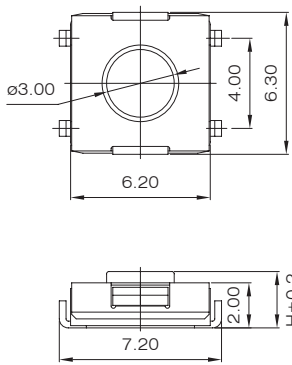


### SPECIFICATIONS

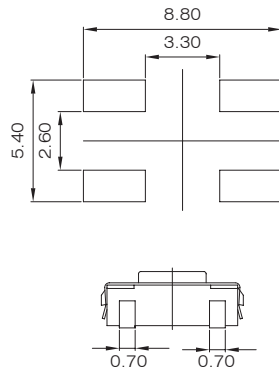
RATING: 50mA, 12VDC  
ELECTRICAL LIFE: 1,000,000 cycles  
CONTACT RESISTANCE: 100mΩ max  
INSULATION RESISTANCE: 100MΩ min. 500VDC  
DIELECTRIC STRENGTH: 250VAC/1 min  
OPERATION FORCE: 100gf, 160gf, 260gf

### DIMENSIONS

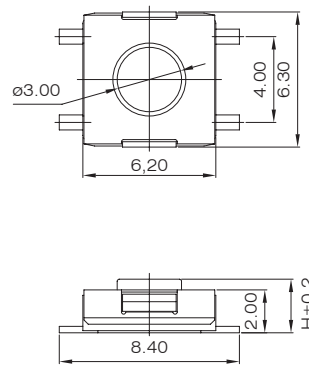
ELTSL-6



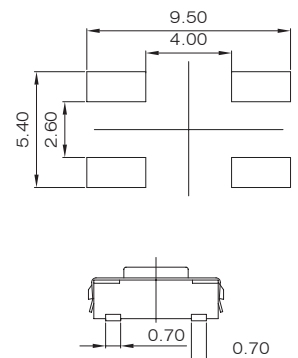
P.C.B. LAYOUT



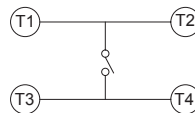
ELTSF-6



P.C.B. LAYOUT



### CIRCUIT



### HOW TO ORDER

ELTS ☐ ☐ - 6 ☐ ☐ - ☐ - ☐ H = RoHS Compliant

Prod. Series ☐ = Without ground terminal  
G = with ground terminal

Terminal style  
L = With L S.M.T  
F = With F S.M.T

Package Style  
☐ = bulk  
T/R = Tape & Reel  
B = Tube

Total Height H  
0 = 2.0mm  
1 = 2.5mm  
2 = 3.1mm

Color Of Stem For Operating Force  
K = black, 100g  
N = brown, 160g  
R = red, 260g