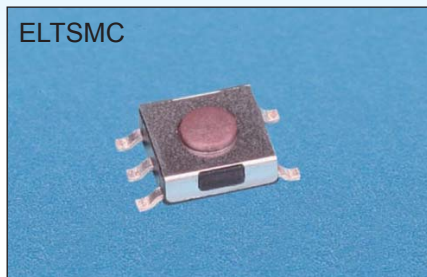
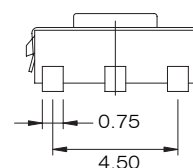
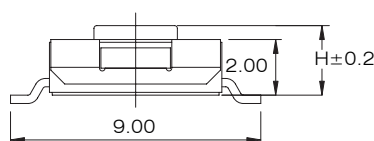
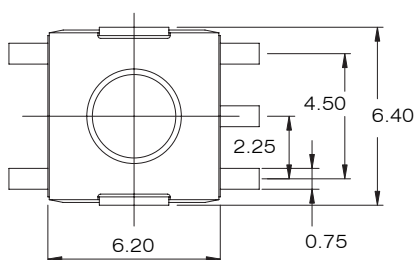
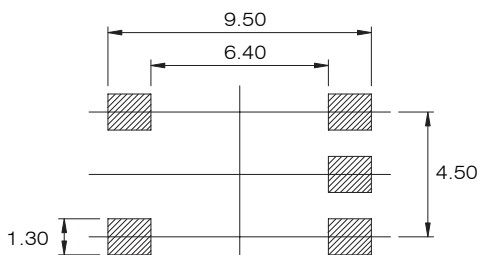
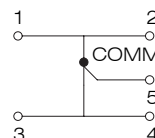


ELTSMC

SPECIFICATIONS

RATING: 50mA, FG/DC
 ELECTRICAL LIFE: 100,000 cycles
 CONTACT RESISTANCE: $\leq 60\text{m}\Omega$ max
 INSULATION RESISTANCE: $100\text{M}\Omega$ min. 250VDC
 DIELECTRIC STRENGTH: 250VAC/1 min
 OPERATION FORCE: 100gf, 160gf, 260gf



ELTSMC-62	3.1
ELTSMC-61	2.5
PROD. NO.	H

P.C.B LAYOUT

CIRCUIT

HOW TO ORDER

ELTSMC - 6 1 - K ☐ - ☐ - H

Function: SPDT, ON-ON

Height:
 1 = 2.5mm
 2 = 3.1mm

Color Of Stem For Operation Force (standard type):
 K = Black 100g
 N = Brown 160g
 R = Red 260g

H = RoHS compliant

Package style:
☐ = Bag
 T/R = Tape & Reel

Operation Force: (non-standard type)
☐ = Regular type
 K = 100g
 N = 160g
 R = 260g