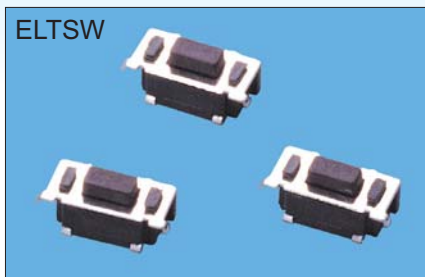
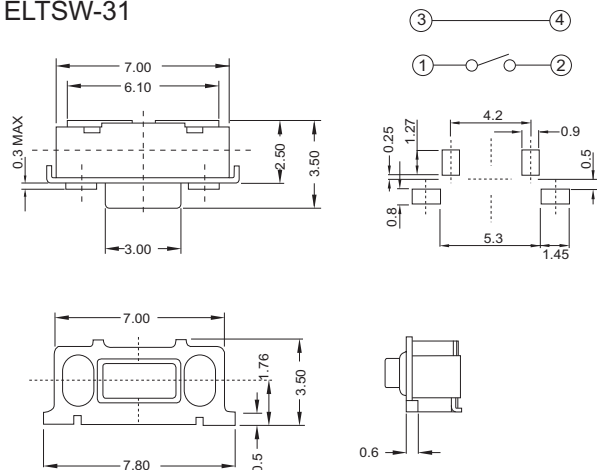
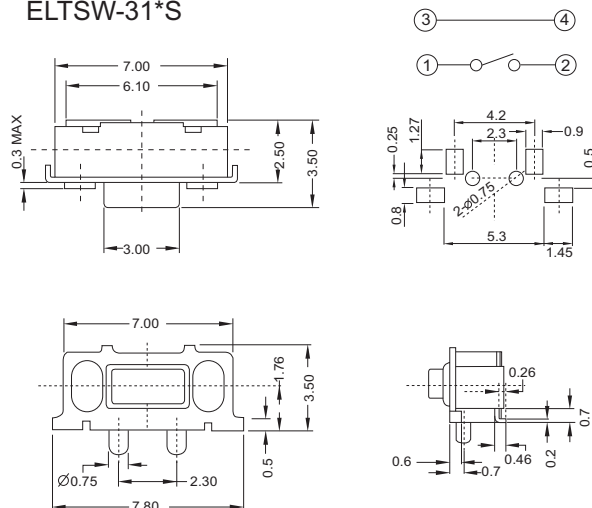
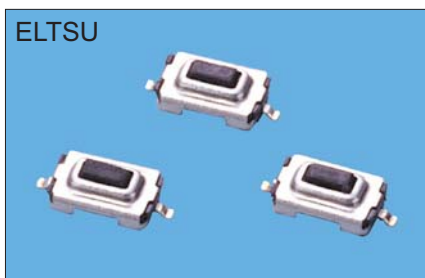
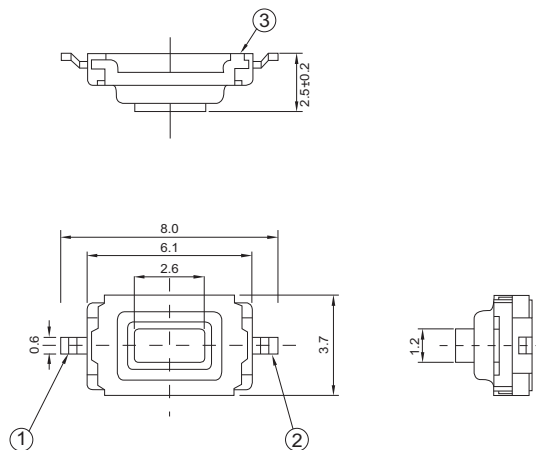
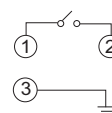
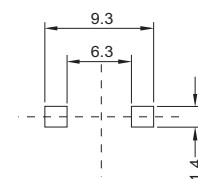


ELTSW

SPECIFICATIONS

RATING: 50mA, 12VDC
 ELECTRICAL LIFE: 30,000~50,000 cycles
 CONTACT RESISTANCE: 100mΩ max
 INSULATION RESISTANCE: 100MΩ min. 100VDC
 DIELECTRIC STRENGTH: 250VAC/1 min
 OPERATION FORCE: 260 ± 70g (only for ELTSU-3)
 160 ± 50g
 STORAGE TEMPERATURE: -30°C to +80°C
 CONTACT ARRANGEMENT: 1 pole 1 throw

DIMENSION
ELTSW-31

ELTSW-31*S

ELTSU

ELTSU-31

Circuit Diagram

P.C.B Layout

HOW TO ORDER

ELTS ☐ — 3 1 ☐ ☐ — ☐ — ☐

Package Style:
T/R: Tape & Reel

RoHS code
H= RoHS Compliant

☐ : None pilot
 S : Base with pilot (only for ELTSW-3)

Operation Force:
 N = 160g
 R = 260g (only for ELTSU-3)

Dimension H:

Code	ELTSU-3	ELTSW-3
1	2.5	3.5

U = Surface Mounting Type
 W = Slide Push Type