

WTS-8



SPECIFICATIONS

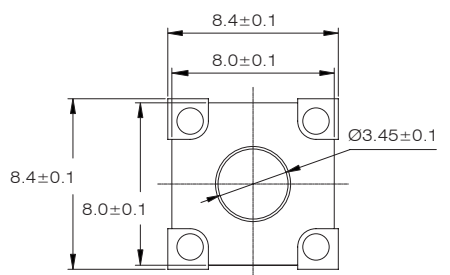
CONTACT RATING: 50mA, 12VDC

ELECTRICAL LIFE: 1,000,000 cycles

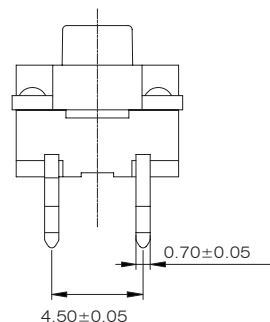
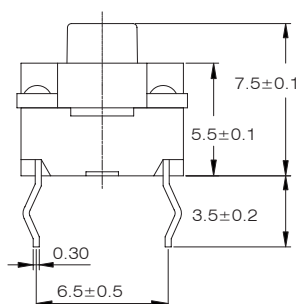
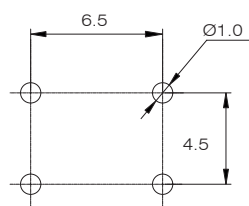
CONTACT RESISTANCE: 100mΩ max.

INSULATION RESISTANCE: 100MΩ min. 500VDC

DIELECTRIC STRENGTH: 250VAC/1 min.



PCB LAYOUT



HOW TO ORDER

WTS	-	<input type="checkbox"/>	-	<input type="checkbox"/>	-	<input type="checkbox"/>	-	<input type="checkbox"/>
WATERPROOF TACT SWITCH		SIZE		ACTUATING FORCE		HEIGHT		RoHS code
		8 = 8 x 8		4 : 200gf 7 : 250gf		1 : 7.5mm 2 : 9.5mm 3 : 10.0mm		H = RoHS Compliant