



SPECIFICATIONS

CONTACT RATING: 10A 125/250VAC

6(3)A 125/250VAC

ELECTRICAL LIFE: 10,000 cycles

CONTACT RESISTANCE: 50 mΩ max. (initial)

INSULATION RESISTANCE: 100 MΩ min.

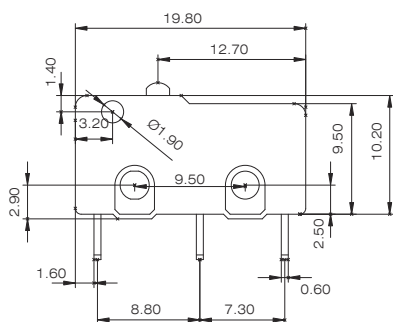
DIELECTRIC STRENGTH: 1000V between contacts

1500V between contact and shell

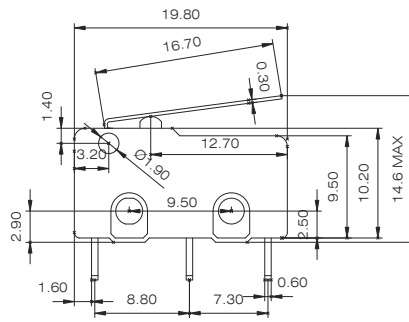
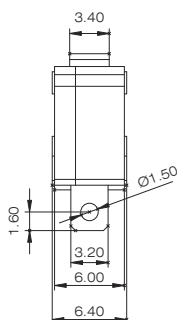
OPERATING TEMPERATURE: -40°C to +85°C



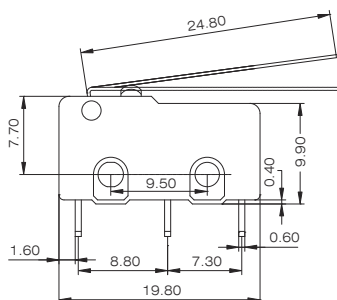
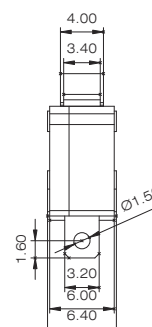
DIMENSIONS



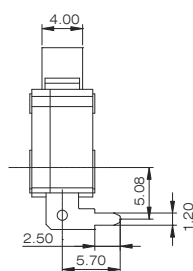
MS1-D*T1-B1



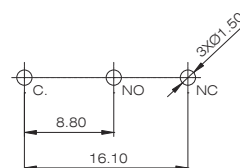
MS1-D*T1-B2



MS1-D*T1-R6



Mounting hole dimensions



For PCB terminal

Contact configuration



HOW TO ORDER

MS1 - ☐ ☐ ☐ ☐ - ☐ ☐ - ☐

Micro switch

- 1) circuit arrangement
D : SPDT
O : SPST(NO : normal open)
C : SPST(NC : normal close)

2) Ratings Level

- A : 0.1A 125/250V AC
B : 1A 125/250V AC
C : 3A 125/250V AC
D : 6A 125/250V AC
6(2)A 125/250V AC
E : 10A 125/250V AC
6(3)A 125/250V AC

3) Temperature Level

T1 : 85°C

RoHS Code

H = RoHS compliant

5) Operation type:

0 : Push-button H=1.4mm

1 : Push-button H=1.1mm

2 : Lever1

3 : Lever2

4 : Lever3

5 : Lever5

6 : Lever6

4) Terminal type

B : Solder terminal

C : PCB terminal

R : Right side PCB terminal