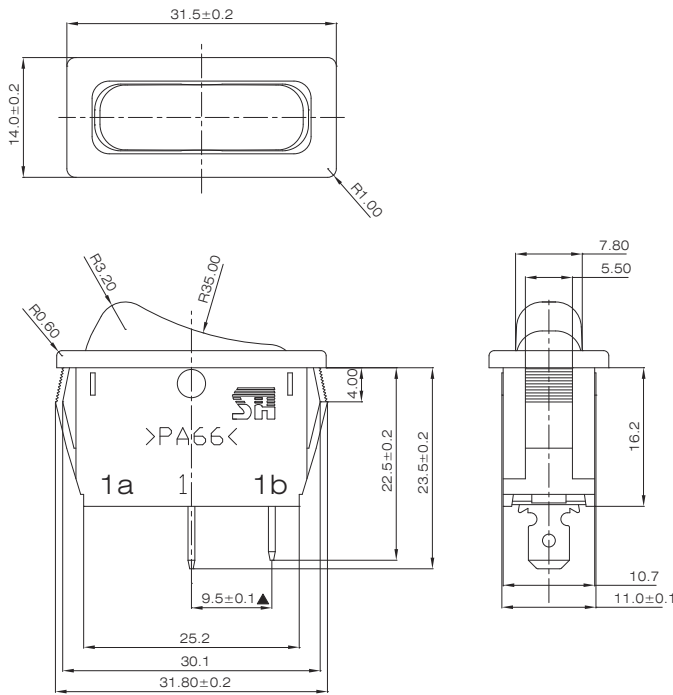




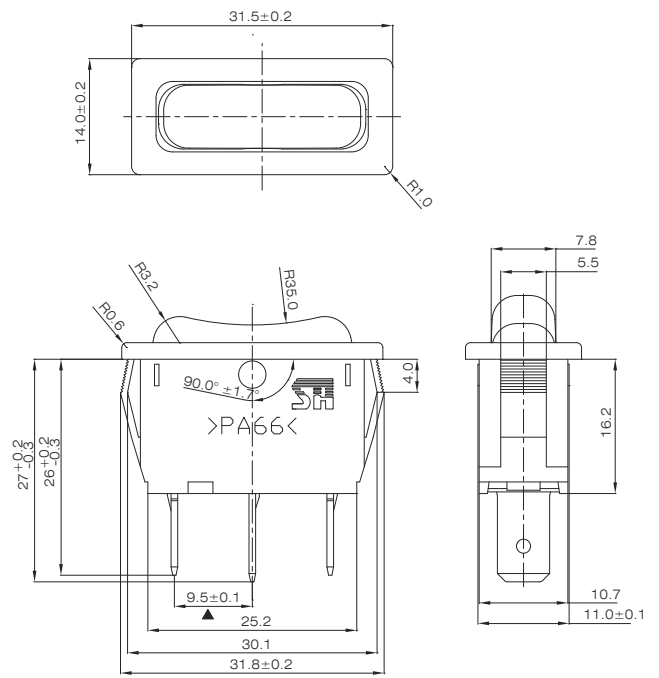
SPECIFICATIONS

CONTACT RATING: 4.5A 28VDC
ELECTRIC LIFE: 10,000 cycles
CONTACT RESISTANCE: 30 mΩ max. (initial)
INSULATION RESISTANCE: 100 MΩ min. 500VDC
DIELECTRIC STRENGTH: 1,000VAC/ 1 min.
OPERATING TEMPERATURE: 0°C to +55°C

Dimensions



R7015-2-D1Q-P45-2P



R7016-2-DQ-P45

How To Order

R7015 - 2 - ☐ - D Q - P45 - ☐ - H

Switch Function
R7015 = On-Non-On
R7015A = On-Non-MOM
R7016 = On-Off-On
R7016A = MOM-Off-MOM
R7016B = On-Off-MOM

Actuator Color
1 = white
2 = black
3 = red
4 = orange

Marking
Non = Std
1 = 0 I
2 = 0 -

ROHS Compliant

Agency approval
Non = Standard
2P = Two terminal

Ratings
P45 = 4.5A, 28VDC

Contact Material
Non = No plated
Q = Silver plated
R = Gold plated

Terminal
B = solder lug
C = PC lug
D = Quick connect