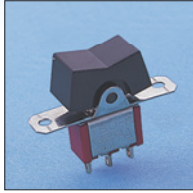
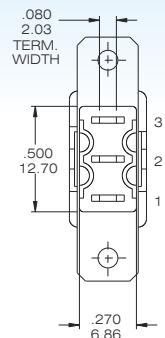
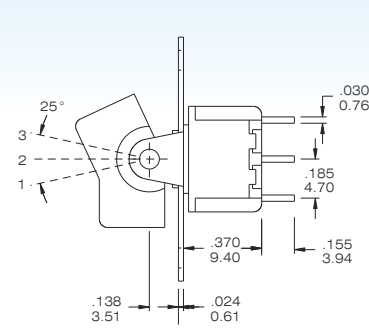
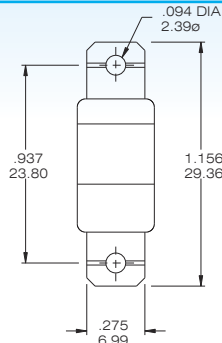
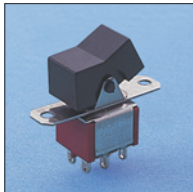


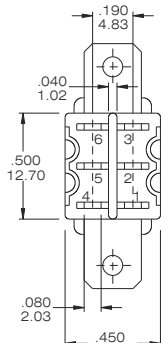
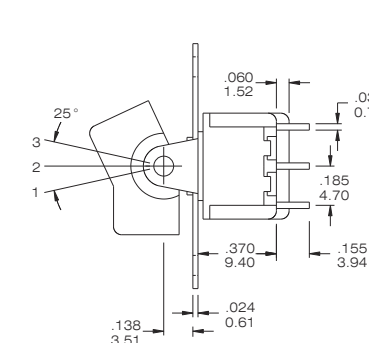
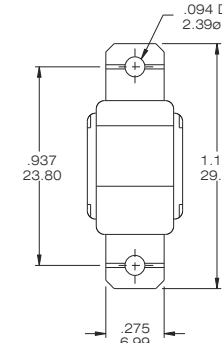


**T80-R (UL1054)****Miniature Rocker and Paddle Switches (Straight Type)****SPDT**

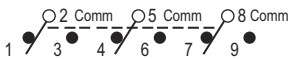
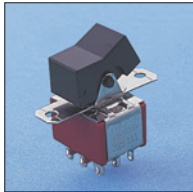
Model No.	Switching position		
R8015	ON	none	ON
R8015A	ON	none	(ON)
R8016	ON	OFF	ON
R8016A	(ON)	OFF	(ON)
R8016B	ON	OFF	(ON)
Term. Comm.	2-3	open	2-1

**R8015 - R11-2-BQ****DPDT**

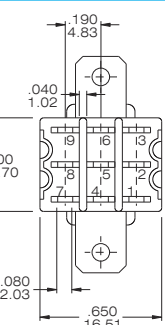
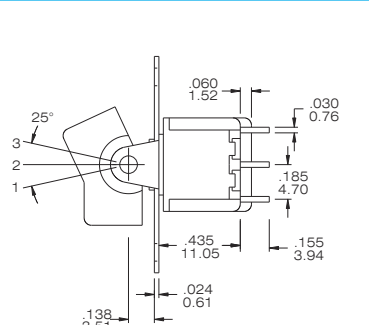
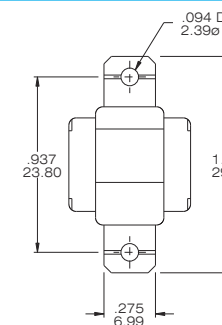
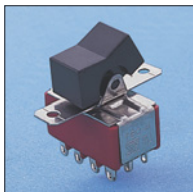
Model No.	Switching position		
R8017	ON	none	ON
R8017A	ON	none	(ON)
R8018	ON	OFF	ON
R8018A	(ON)	OFF	(ON)
R8018B	ON	OFF	(ON)
Term. Comm.	2-3,5-6	open	2-1,5-4
3 way switches (SP3T)			
R818	ON	ON	ON
R818A	(ON)	ON	(ON)
R818B	ON	ON	(ON)
Term. Comm.	2-3,5-6	2-3,5-4	2-1,5-4

**R8017 - R11-2-BQ**

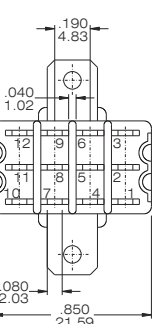
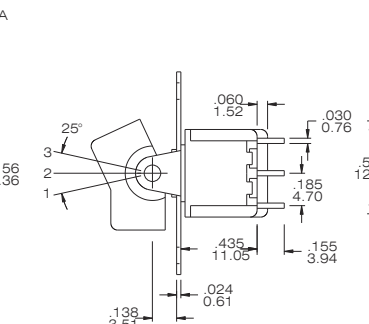
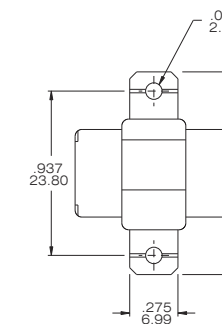
Please see page B14 to know more about R818 (3-way Switches)

3PDT

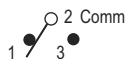
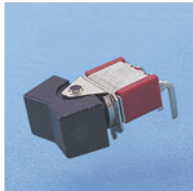
Model No.	Switching position		
R8301V	ON	none	ON
R8303V	ON	none	(ON)
R8305V	ON	OFF	ON
R8307V	(ON)	OFF	(ON)
R8309V	ON	OFF	(ON)
Term. Comm.	2-3,5-6 8-9	open	2-1,5-4 8-7

**R8301V- R11-2-BQ****4PDT**

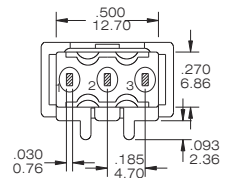
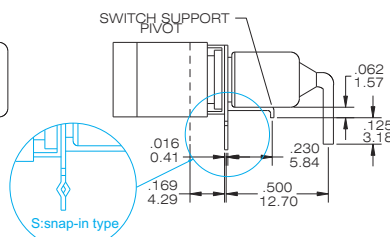
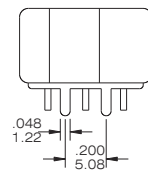
Model No.	Switching position		
R8401V	ON	none	ON
R8403V	ON	none	(ON)
R8405V	ON	OFF	ON
R8407V	(ON)	OFF	(ON)
R8409V	ON	OFF	(ON)
Term. Comm.	2-3,5-6 8-9,11-12	open	2-1,5-4 8-7,11-10
3 way switches (DP3T)			
R845V	ON	ON	ON
R847V	(ON)	ON	(ON)
R849V	ON	ON	(ON)
Term. Comm.	2-3,5-6 8-9,11-12	2-3,5-4 8-9,11-10	2-1,5-4 8-7,11-10

**R8401V -R11-2-BQ**

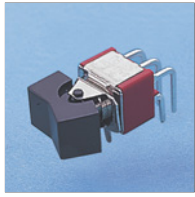
Please see page B14 to know more about R845V (3-way Switches)

HORISON RIGHT ANGLE**SPDT**

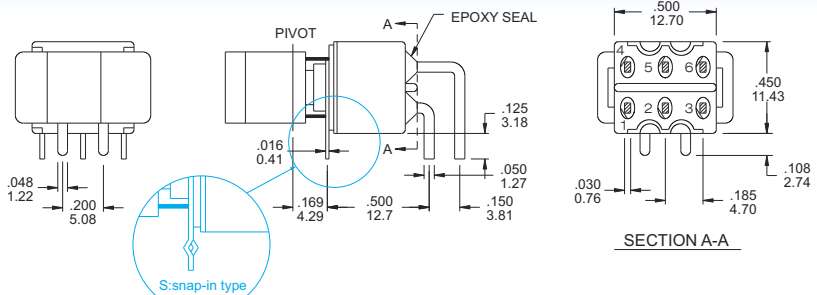
Model No.	Switching position		
R8015P	ON	none	ON
R8015PA	ON	none	(ON)
R8016P	ON	OFF	ON
R8016PA	(ON)	OFF	(ON)
R8016PB	ON	OFF	(ON)
Term. Comm.	2-3	open	2-1

**R8015P- R11-2-Q / R8015P - R11 -2 -Q-S**

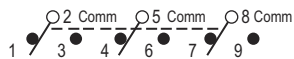
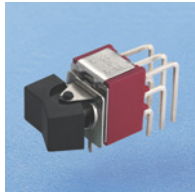
The dimensions in the catalogue and website are for reference only, not suitable for formal acknowledge.

**T80-R (UL1054)****Miniature Rocker and Paddle Switches (Right Angle Type)****HORISON RIGHT ANGLE****DPDT**

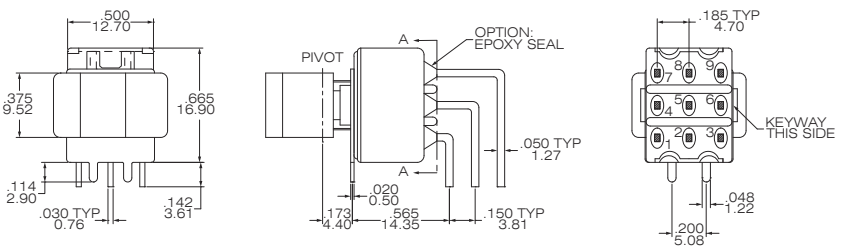
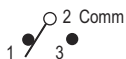
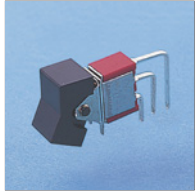
Model No.	Switching position		
R8017P	ON	none	ON
R8017PA	ON	none	(ON)
R8018P	ON	OFF	ON
R8018PA	(ON)	OFF	(ON)
R8018PB	ON	OFF	(ON)
Term. Comm.	2-3,5-6	open	2-1,5-4
3 way switches (SP3T)			
R818P	ON	ON	ON
R818PA	(ON)	ON	(ON)
R818PB	(ON)	ON	(ON)
Term. Comm.	2-3,5-6	2-3,5-4	2-1,5-4

**R8017P - R11-2-Q / R8017P - R11-2 -Q-S**

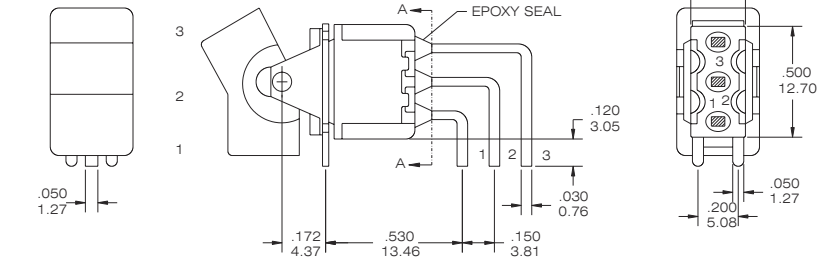
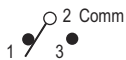
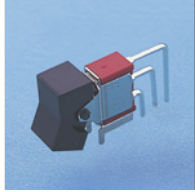
Please see page B14 to know more about R818P (3-way Switches)

3PDT

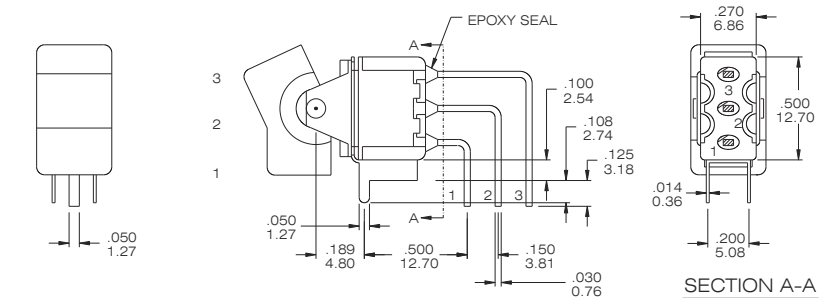
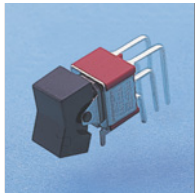
Model No.	Switching position		
R8301P(A)	ON	none	ON
R8303P(A)	ON	none	(ON)
R8305P(A)	ON	OFF	ON
R8307P(A)	(ON)	OFF	(ON)
R8309P(A)	ON	OFF	(ON)
Term. Comm.	2-3,5-6	open	2-1,5-4
	8-9		8-7

**R8301P(A)- R11-2-Q****VERTICAL RIGHT ANGLE****SPDT**

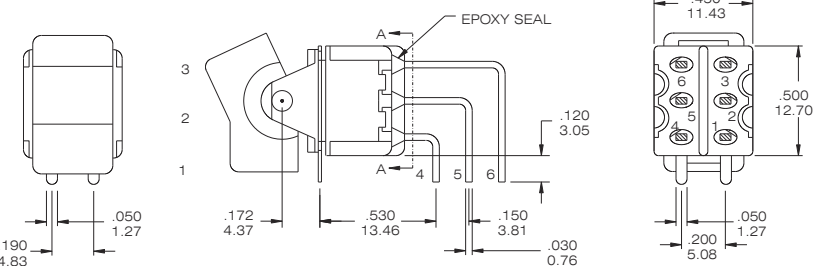
Model No.	Switching position		
R8015L	ON	none	ON
R8015LA	ON	none	(ON)
R8016L	ON	OFF	ON
R8016LA	(ON)	OFF	(ON)
R8016LB	ON	OFF	(ON)
Term. Comm.	2-3	open	2-1

**R8015L - R11-2-Q****SPDT**

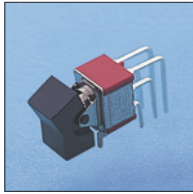
Model No.	Switching position		
R8013L	ON	none	ON
R8013LA	ON	none	(ON)
R8014L	ON	OFF	ON
R8014LA	(ON)	OFF	(ON)
R8014LB	ON	OFF	(ON)
Term. Comm.	2-3	open	2-1

**R8013L- R11-2-Q****DPDT**

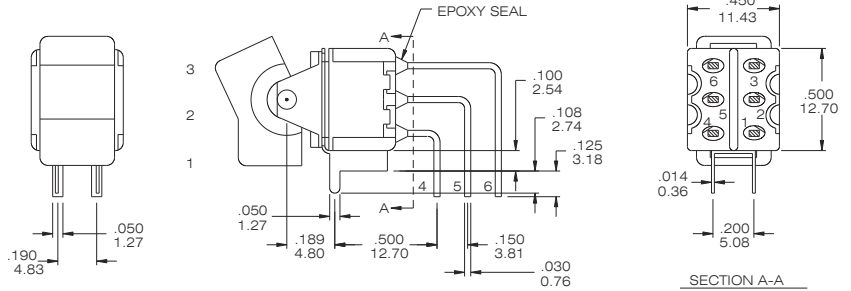
Model No.	Switching position		
R8017L	ON	none	ON
R8017LA	ON	none	(ON)
R8018L	ON	OFF	ON
R8018LA	(ON)	OFF	(ON)
R8018LB	ON	OFF	(ON)
Term. Comm.	2-3,5-6	open	2-1,5-4
3 way switches (SP3T)			
R818L	ON	ON	ON
R818LA	(ON)	ON	(ON)
R818LB	ON	ON	(ON)
Term. Comm.	2-3,5-6	2-3,5-4	2-1,5-4

**R8017L - R11-2-Q**

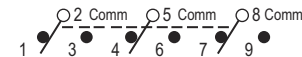
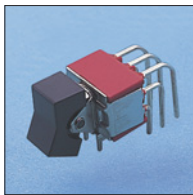
Please see page B14 to know more about R818L (3-way Switches)

**T80-R (UL1054)****Miniature Rocker and Paddle Switches (Right Angle Type)****VERTICAL RIGHT ANGLE PAGE****DPDT**

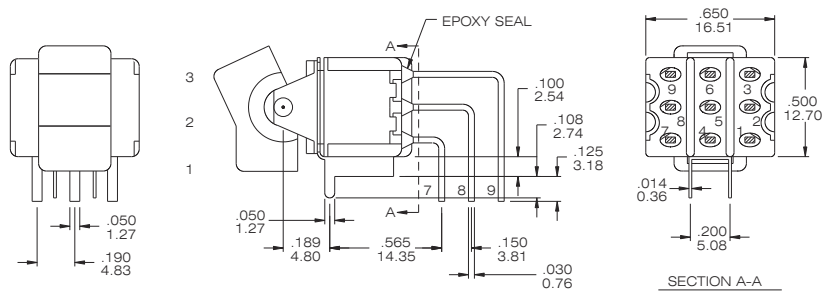
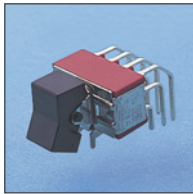
Model No.	Switching position		
R8011L	ON	none	ON
R8011LA	ON	none	(ON)
R8012L	ON	OFF	ON
R8012LA	(ON)	OFF	(ON)
R8012LB	ON	OFF	(ON)
Term. Comm.	2-3,5-6	open	2-1,5-4
3 way switches (SP3T)			
R812L	ON	ON	ON
R812LA	(ON)	ON	(ON)
R812LB	ON	ON	(ON)
Term. Comm.	2-3,5-6	2-3,5-4	2-1,5-4

**R8011L - R11-2-Q**

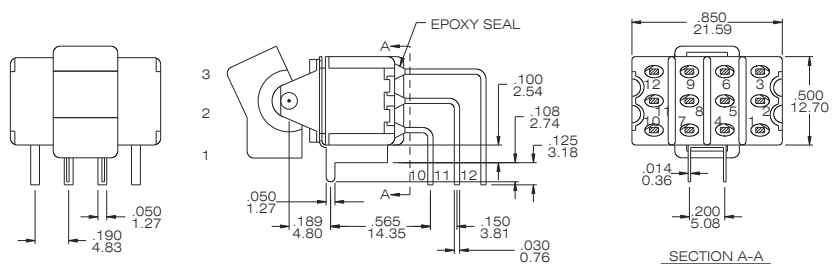
Please see page B14 to know more about R812L (3-way Switches)

3PDT

Model No.	Switching position		
R8301L	ON	none	ON
R8303L	ON	none	(ON)
R8305L	ON	OFF	ON
R8307L	(ON)	OFF	(ON)
R8309L	ON	OFF	(ON)
Term. Comm.	2-3,5-6 8-9	open	2-1,5-4 8-7

**R8301L- R11-2-Q****4PDT**

Model No.	Switching position		
R8401L	ON	none	ON
R8403L	ON	none	(ON)
R8405L	ON	OFF	ON
R8407L	(ON)	OFF	(ON)
R8409L	ON	OFF	(ON)
Term. Comm.	2-3,5-6 8-9,11-12	open	2-1,5-4 8-7,11-10
3 way switches (DP3T)			
R845L	ON	ON	ON
R847L	(ON)	ON	(ON)
R849L	ON	ON	(ON)
Term. Comm.	2-3,5-6 8-9,11-12	2-3,5-4 8-9,11-10	2-1,5-4 8-7,11-10

**R8401L - R11-2-Q**

Please see page B14 to know more about R845L(3-way Switches)

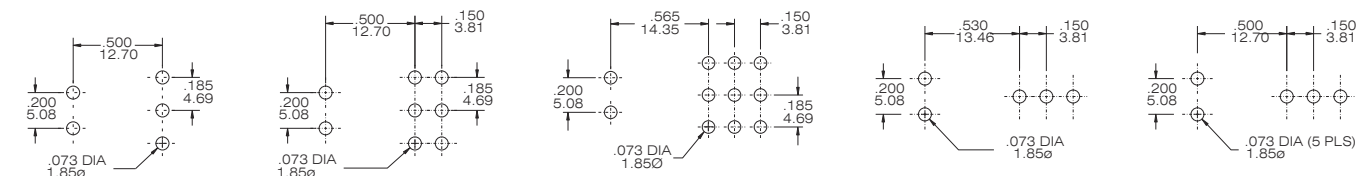
FOR R8015P-R8016P

FOR R8017P-R8018P

FOR R8301P(A)-R8309P(A)

FOR R8015L-R8016L

FOR R8013L-R8014L

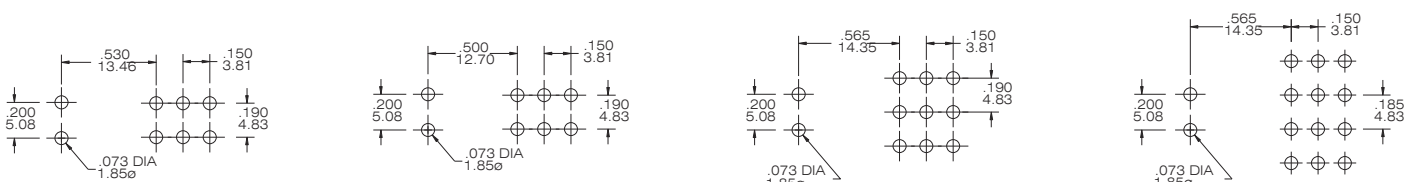


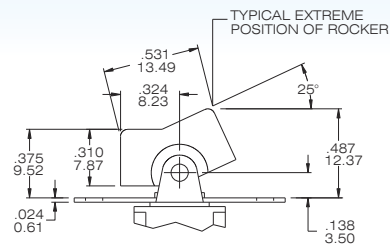
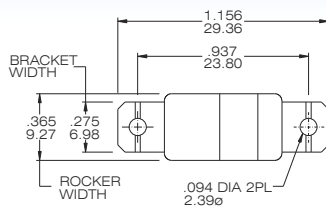
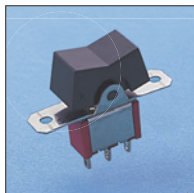
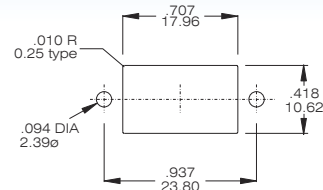
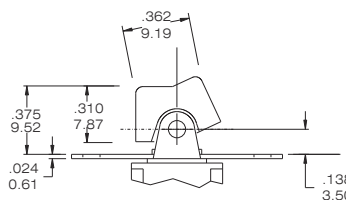
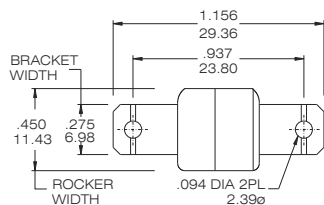
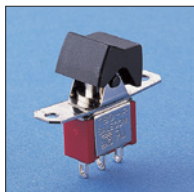
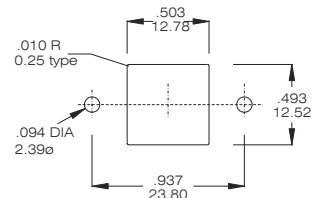
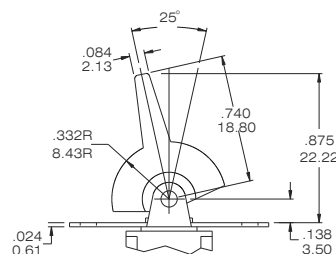
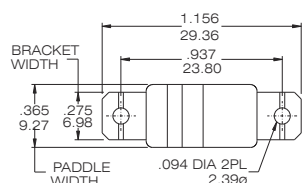
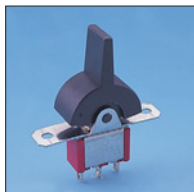
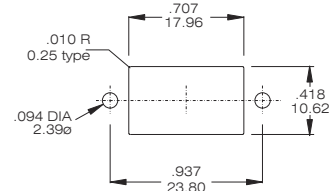
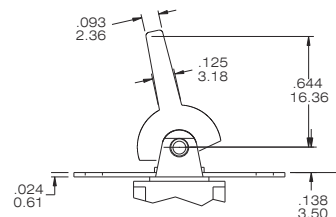
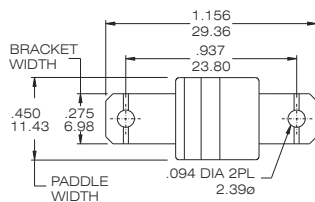
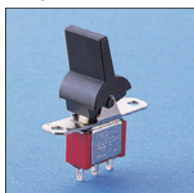
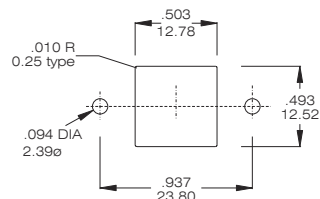
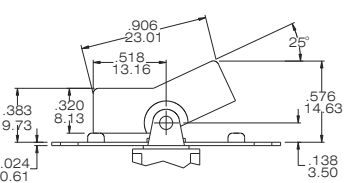
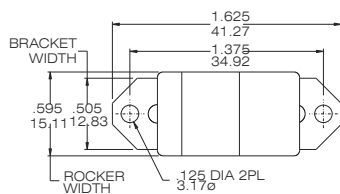
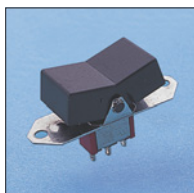
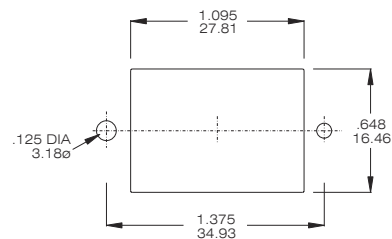
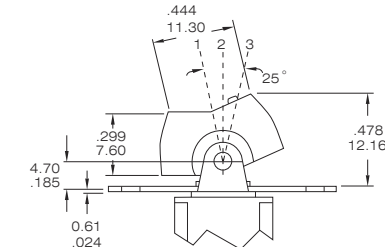
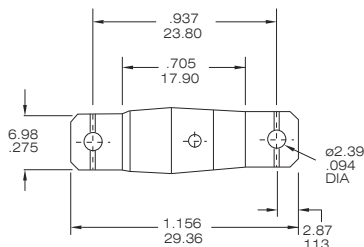
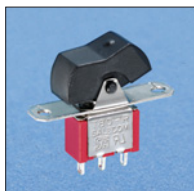
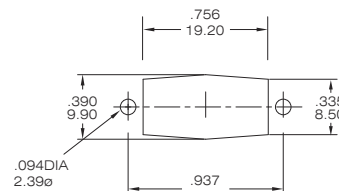
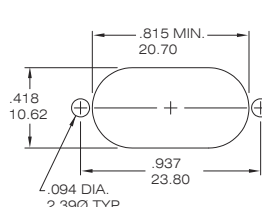
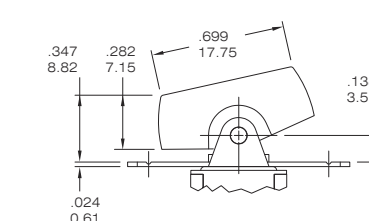
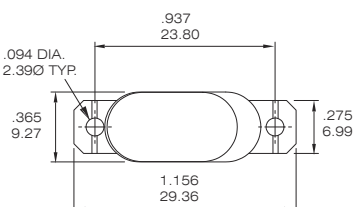
FOR R8017L-R8018L

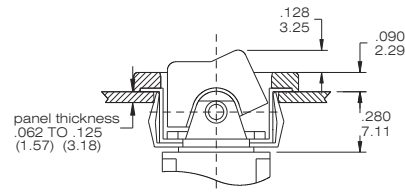
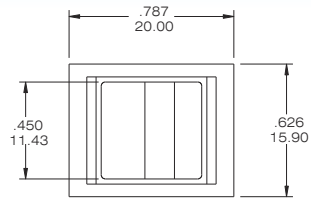
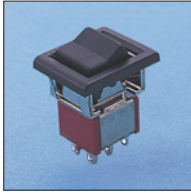
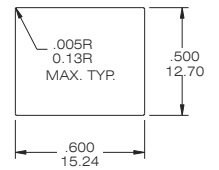
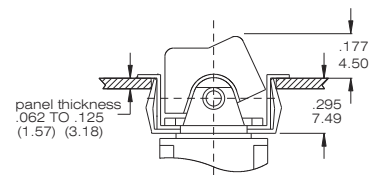
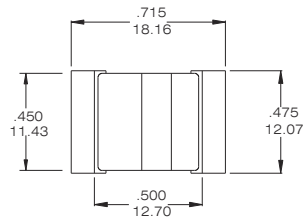
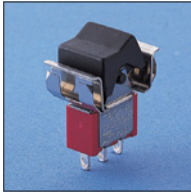
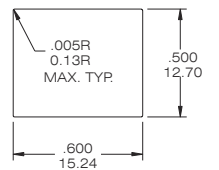
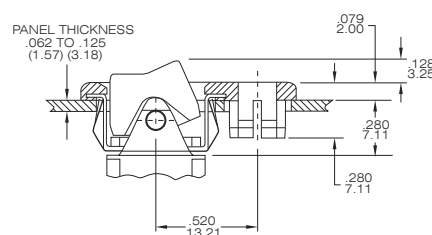
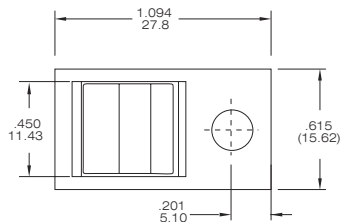
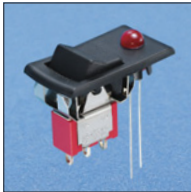
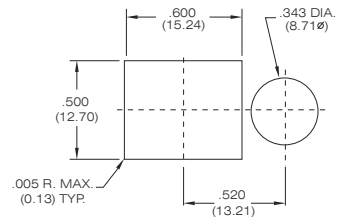
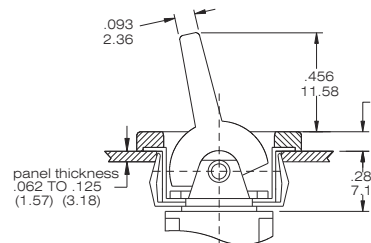
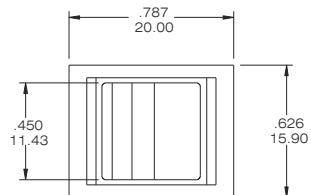
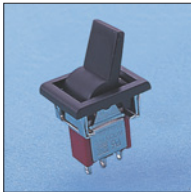
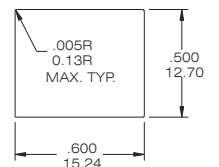
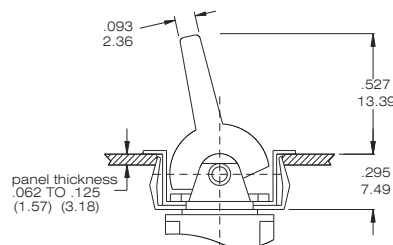
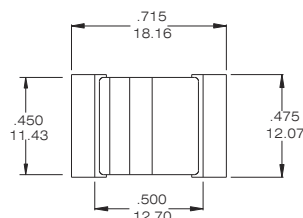
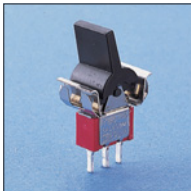
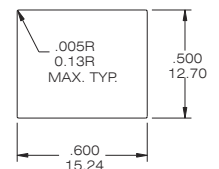
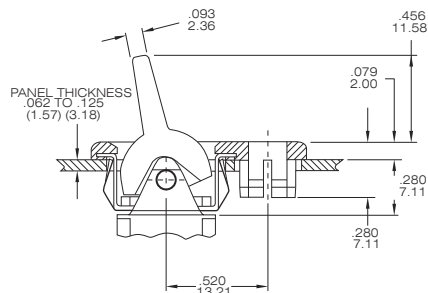
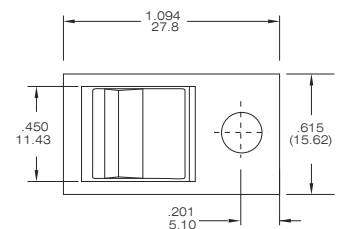
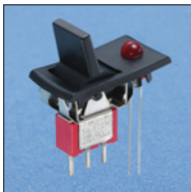
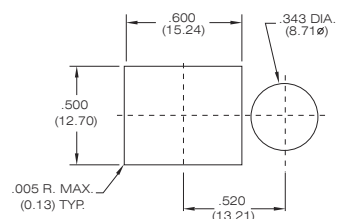
FOR R8011L-R8012L

FOR R8301L-R8309L

FOR R8401L-R8409L

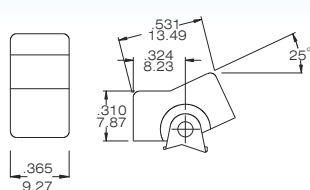
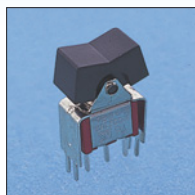


**T80-R****Miniature Rocker and Paddle Switches****Actuator Option(PANEL REAR MOUNT) only for the straight type (Page B08)****R11****PANELMOUNTING****R21****PANELMOUNTING****P13****PANELMOUNTING****P23****PANELMOUNTING****R15****PANELMOUNTING****R17****PANELMOUNTING****R19**

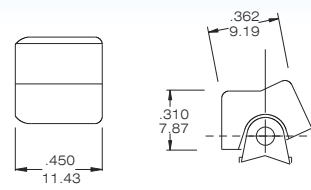
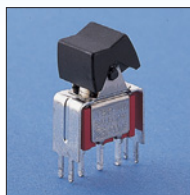
**T80-R****Miniature Rocker and Paddle Switches****Actuator Option(SNAP-IN FRONT MOUNT) only for the straight type (Page B08)****R12****PANEL MOUNTING****R22****PANEL MOUNTING****R32****PANEL MOUNTING****P14****PANEL MOUNTING****P24****PANEL MOUNTING****P34****PANEL MOUNTING**

Actuator Option (P.C.B MOUNT)

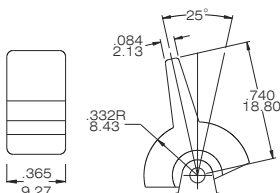
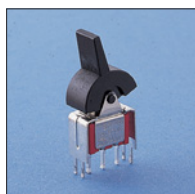
R11



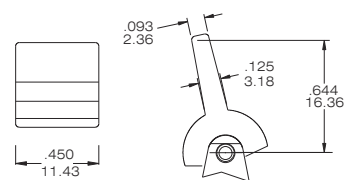
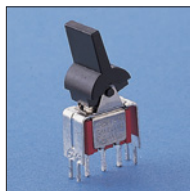
R21



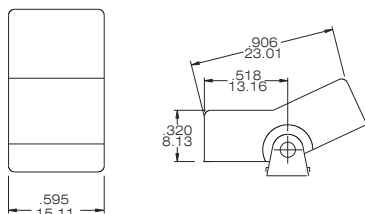
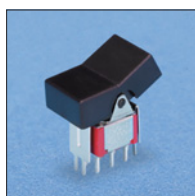
P13



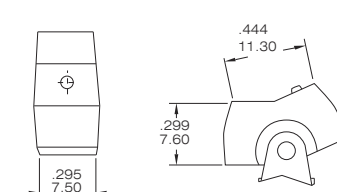
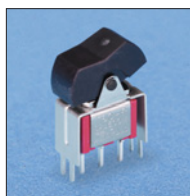
P23



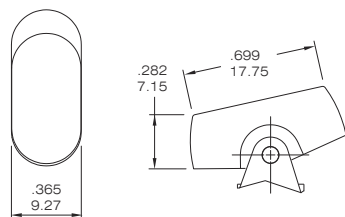
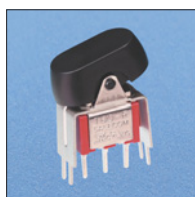
R15



R17



R19



Actuator Color Option

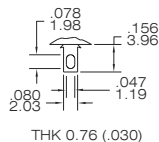
ACTUATOR AND FRAME COLORS

1	White	4	Orange	7	Blue
2	Black(Std.)	5	Yellow	9	Gray
3	Red	6	Green		

TERMINAL OPTION (ONLY FOR THE STRAIGHT TYPE R8015~R8401)

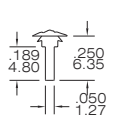
TERMINAL SEAL OPTION

B SOLDER LUG



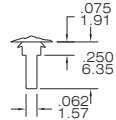
THK 0.76 (.030)

C PRINTED CIRCUIT



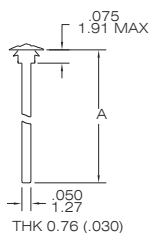
THK 0.76 (.030)

D QUICK CONNECT



THK 0.76 (.030)

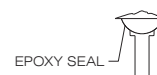
WIREWRAP



THK 0.76 (.030)

CODE	"A" dimension
D1	.750 (19.05)
D3	.425 (10.8)

E TERMINAL SEAL



EPOXY SEAL

CONTACT MATERIAL OPTIONS

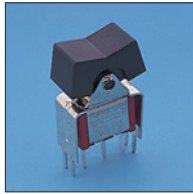
CODE	CONTACT MATERIAL	TERMINAL MATERIAL	RATING
Q	Silver plated	Silver plated	5 A @ 125 V AC or 28 V DC; 3 A @ 250 VAC
R	Gold plated over nickel plated	Gold plated over nickel plated	0.4VA MAX @ 20 V AC or DC MAX
G	Gold plated over silver plated	Gold plated over silver plated	0.4 VA MAX @ 20 V AC or DC MAX or 5 A @ 125V AC or 28 V DC; 3 A @ 250 VAC
K	Gold plated over nickel plated	Tin over nickel plated	0.4VA MAX @ 20 V AC or DC MAX

* THE K option is only for some special item. Please inquire first when you need the "K" option

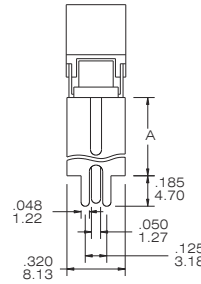
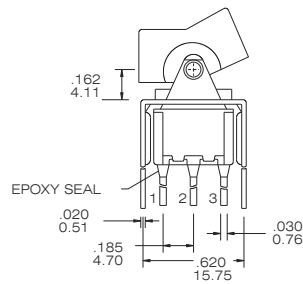
VERTICAL SUPPORT BRACKET OPTION

(only apply the straight type terminal -page B08. Please build the terminal option is "c" code)

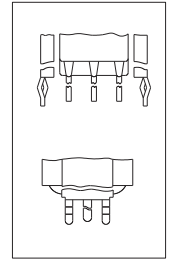
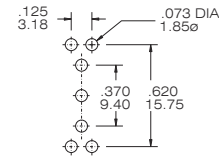
S20 / S25/ V20/V25



SPDT



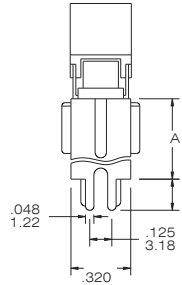
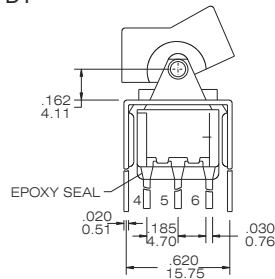
P.C. MOUNTING



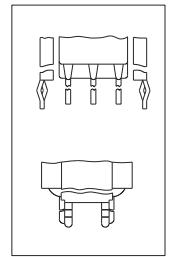
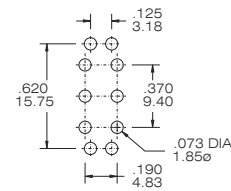
SNAP-IN
V20/ V25

R8015-R11-2-CQ-S20(S25)

DPDT



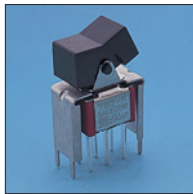
P.C. MOUNTING



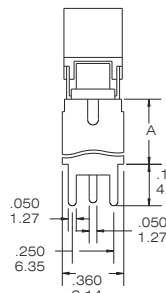
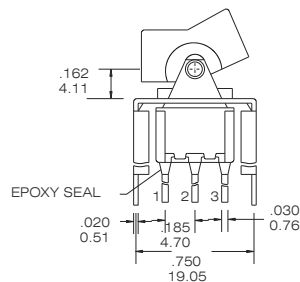
SNAP-IN
V20/ V25

R8017 - R11-2-CQ-S20(S25)

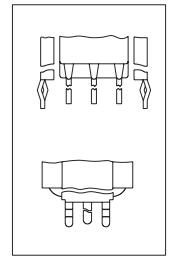
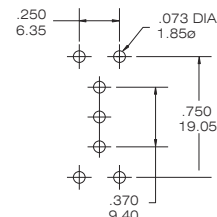
S35/S40 /V35/V40



SPDT



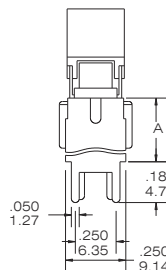
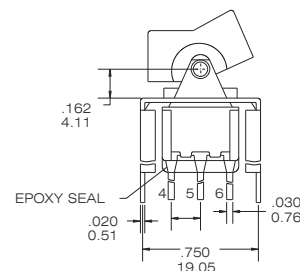
P.C. MOUNTING



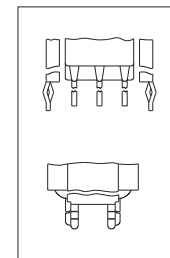
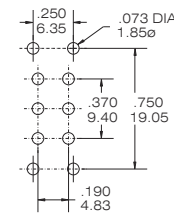
SNAP-IN
V35/ V40

R8015-R11-2-CQ-S35(S40)

DPDT



P.C. MOUNTING



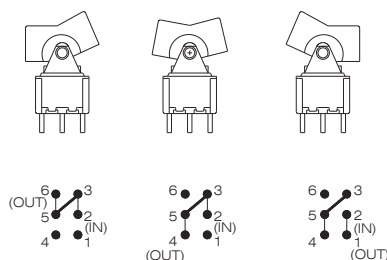
SNAP-IN
V35/ V40

R8017-R11-2-CQ-S35(S40)

The information of 3-way rocker switches

POS.3
POS.2
POS.1

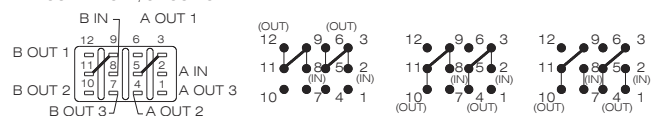
SINGLE POLE, 3 POSITION



SP3T

POS.3
POS.2
POS.1

DOUBLE POLE, 3 POSITION



DP3T