

SPECIFICATIONS

CONTACT RATING: 0.4 VA max. @20V AC or DC max.
ELECTRICAL LIFE: 40,000 make-and-break cycles at full load
CONTACT RESISTANCE: 50 mΩ max. initial @2-4 VDC, 100 mA
INSULATION RESISTANCE: 1,000 MΩ min.
DIELECTRIC STRENGTH: 500 V RMS @ sea level.
OPERATING TEMPERATURE: -30°C to +85°C

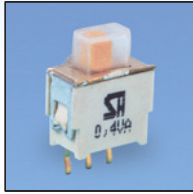
MATERIALS

CASE: nylon 6/6
ACTUATOR: nylon 6/6
FRAME: nylon 6/6
TERMINAL: Copper alloy, gold plated
CONTACT: Copper alloy, silver plated
SWITCH SUPPORT: Copper alloy, tin plated
SLIDE BUTTON: POM
WATERPROOF COVER: Silica gel

How do you build the switches you need!!

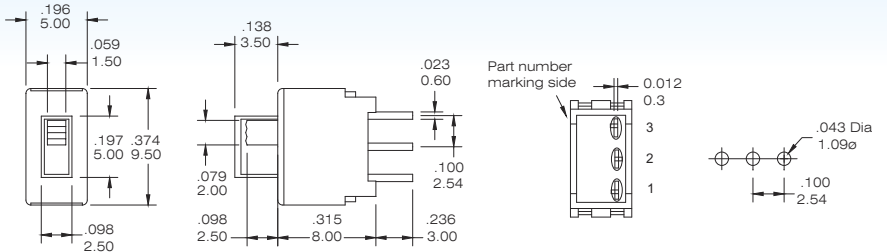
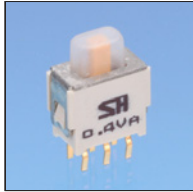
S S - 4 - C K - -

Switch Function		Termination		Contact Material		Package Style		RoHS code
SS-4	SP on-none-on	C	P.C	K	(std) gold / tin plated	(none)	bag or box	H = RoHS Compliant
SS-4A	SP on-off-on	H	horizon	R	gold plated	T/R	tape & reel	
SS-5	DP on-none-on							
SS-5A	DP on-off-on	M	SMT					

**SS30****Sealed Sub-miniature Slide Switches**

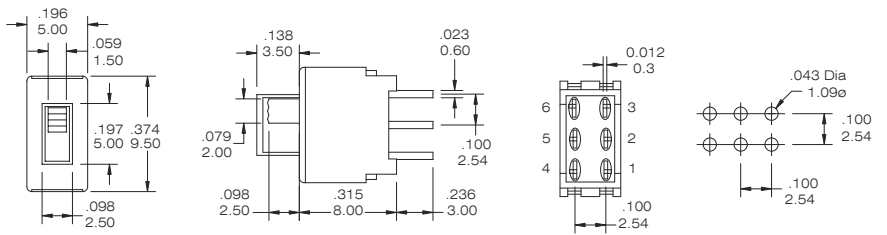
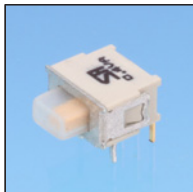
SPDT

Model No.	Switching position		
SS-4-C	ON	none	ON
SS-4A-C	ON	OFF	ON
Term. Comm.	2-3	open	2-1

**SS-4-CK**

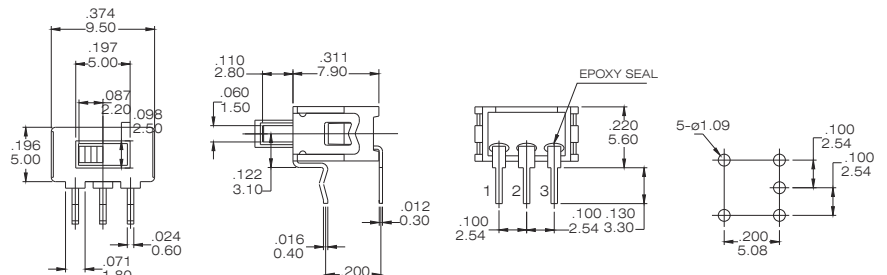
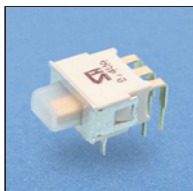
DPDT

Model No.	Switching position		
SS-5-C	ON	none	ON
SS-5A-C	ON	OFF	ON
Term. Comm.	2-3,5-6	open	2-1,5-4

**SS-5-CK**

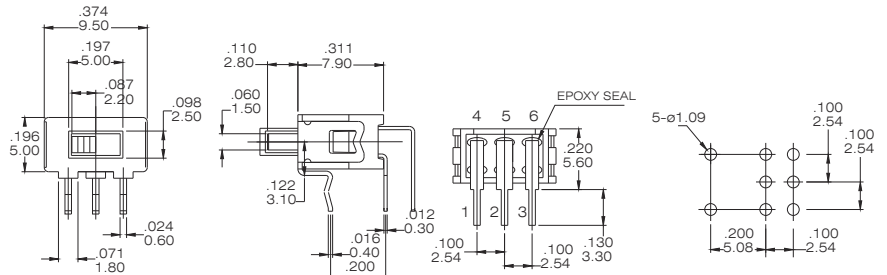
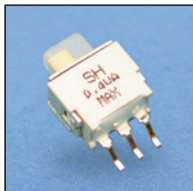
SPDT

Model No.	Switching position		
SS-4-H	ON	none	ON
SS-4A-H	ON	OFF	ON
Term. Comm.	2-3	open	2-1

**SS-4-HK**

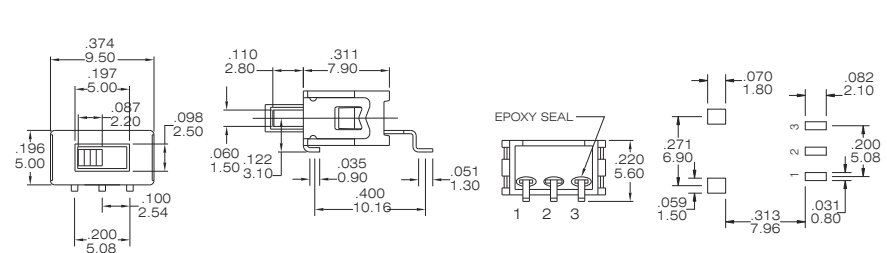
DPDT

Model No.	Switching position		
SS-5-H	ON	none	ON
SS-5A-H	ON	OFF	ON
Term. Comm.	2-3,5-6	open	2-1,5-4

**SS-5-HK**

SPDT

Model No.	Switching position		
SS-4-M	ON	none	ON
SS-4A-M	ON	OFF	ON
Term. Comm.	2-3	open	2-1

**SS-4-MK****CONTACT MATERIAL OPTIONS**

CODE	CONTACT MATERIAL	TERMINAL MATERIAL	RATING
K	Brass, gold plated	Copper alloy, tin plated	0.4VA MAX @ 20 VAC or VDC
R	Gold plated over nickel plated	Gold plated over nickel plated	0.4VA MAX @ 20 V AC or DC MAX

The dimensions in the catalogue and website are for reference only, not suitable for formal acknowledge.