

LT4



SPECIFICATIONS

CONTACT RATING: 100mA, 42VAC/DC

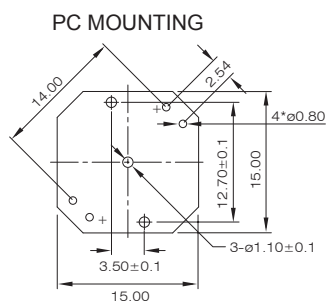
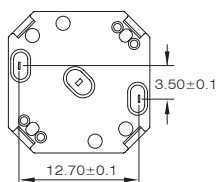
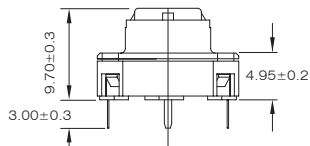
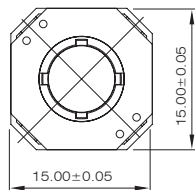
MECHANICAL LIFE: 1,000,000 cycles

CONTACT RESISTANCE: 100mΩ max.(initial)

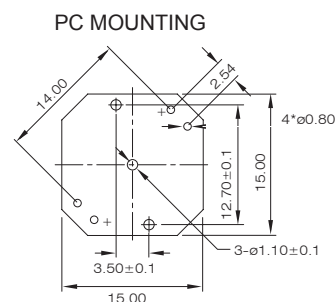
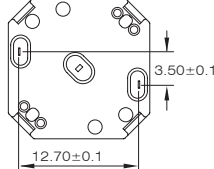
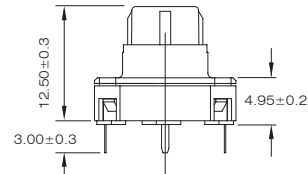
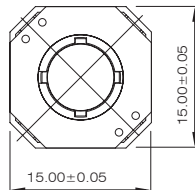
INSULATION RESISTANCE: 1,000MΩ min.

DIELECTRIC STRENGTH: 1,500VAC

OPERATING TEMPERATURE: -25°C to +70°C



LT4-15-1



LT4-15-2

HOW TO ORDER

LT4 - 15 - HT - ☐ - ☐ - ☐ - ☐ - ☐ - ☐

LT Series

size:

19: 19×19mm

15: 15×15mm

HT Material:

HT = HIGH Temperature

Height:

1: 9.7 mm

2: 12.5 mm

RoHS CODE:

H =RoHS Compliant

Another LED Color:

1:white

3: red

5: yellow

6: green

7: blue

LED Color:

1:white

3: red

5: yellow

6: green

7: blue

LED quantity:

0: no LED

1: one LED

2: two LED

LED Size :

A: φ 3mm LED

B: 2mm LED