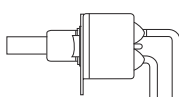
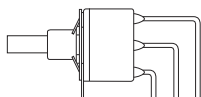
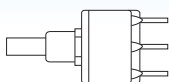
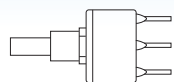


**E80-P****Sealed Snap-Acting Momentary Pushbutton Switches****SPECIFICATIONS**

CONTACT RATING: 1A @120 VAC or 28 VDC

ELECTRICAL LIFE:50,000 make-and-break cycles at full load

CONTACT RESISTANCE: 20 mΩ max. initial @2-4 VDC,100 mA

INSULATION RESISTANCE: 1,000 MΩ min.

DIELECTRIC STRENGTH: 1,000 V RMS @ sea level.

OPERATING TEMPERATURE: -30°C to +85°C

**MATERIALS**

CASE &amp; BUSHING - Glass filled nylon 6/6 or nylon 4/6 (UL94V-0)

PLUNGER - Glass filled nylon or glass filled polyester (UL94V-0), with internal o-ring seal standard

SWITCH SUPPORT - Copper alloy or steel, tin plated

CONTACT AND TERMINAL - Copper alloy, silver plated

TERMINAL SEAL - Epoxy

**How do you build the switches you need!!****The straight type, please see the (A);****The right angle P.C terminals, please see the (B)**(A) **N E 8 7 0 1 - C V 1 - 2 - N - C Q - S 2 0 -**

Switches Function	
NE8701	SPDT on-mon
NE8702	DPDT on-mon

Cap	
none	(none)
CV	5.08
CV1	7.70
CV2	9.53
CV4	dress nut
CV6	9.80

Cap color	
1	white
2	black
3	red
4	orange
5	yellow
6	green
7	blue
9	gray

Bushing		
E	Thd. Key-way	8.89
N	Non-thd/key-way	6.35

Termination	
B	solder lug
C	P.C 1.27width

Contact Material	
Q	silver plated
R	gold plated
G	gold over silver

RoHS code
H = RoHS Compliant

Vertical support Bracket	
(none)	
S20	11.68
V20	snap-in 11.68

(B) **N E 8 7 0 1 - A 4 - C V 1 - 2 - N - Q -**

Switches Function	
NE8701	SPDT on-mon
NE8702	DPDT on-mon

Right Angle	
A4	Horizon
A5	Vertical

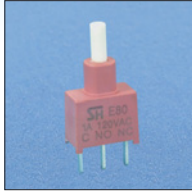
Cap	
none	(none)
CV	5.08
CV1	7.70
CV2	9.53
CV6	9.80

Cap color	
1	white
2	black
3	red
4	orange
5	yellow
6	green
7	blue
9	gray

Bushing	
N	(Std.) non-thd/key-way

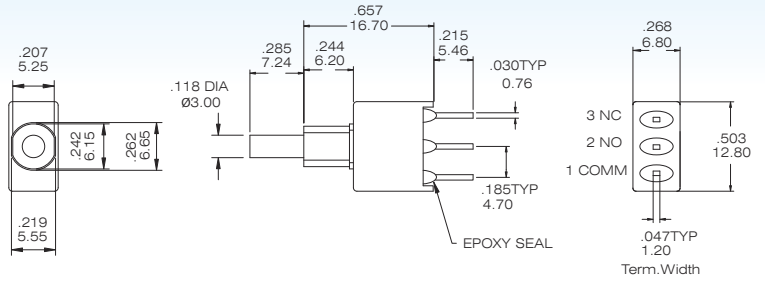
RoHS code
H = RoHS Compliant

Contact Material	
Q	silver plated
R	gold plated
G	gold over silver



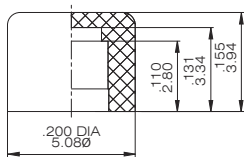
### SPDT

Model No.	Switching position	
NE8701	on	mom
Term. Comm.	1-3	1-2

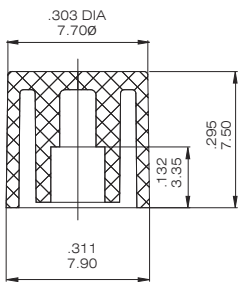


**E80-P****Sealed Snap-Acting Momentary Pushbutton Switches****Cap Option****Cap color Option**

CV



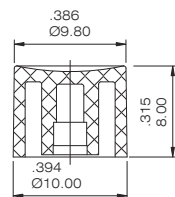
CV1



CV2



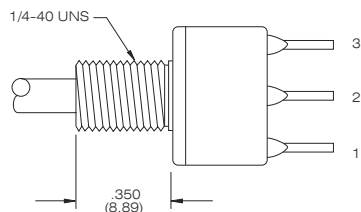
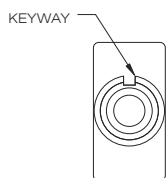
CV6

**CAP & ACTUATOR OPTIONS**

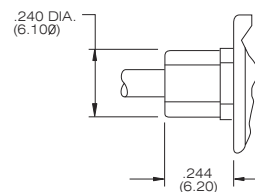
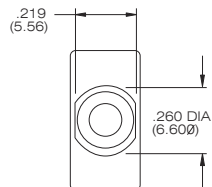
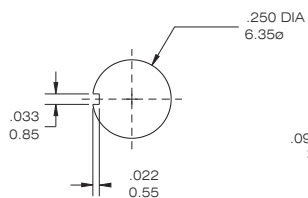
1	White
2	Black(Std.)
3	Red
4	Orange
5	Yellow
6	Green
7	Blue
9	Gray

**Bushing Option**

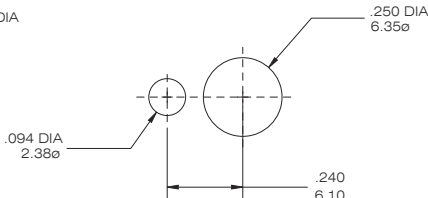
E



N

**Panel mounting Dimension**

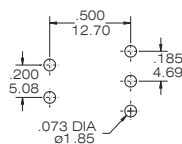
without lock ring



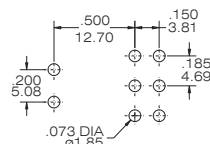
with lock ring

**P.C.B. mounting Dimension**

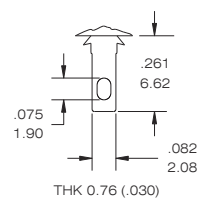
NE8701-A4



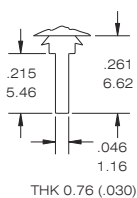
NE8702-A4

**TERMINAL OPTION (only for the straight type)**

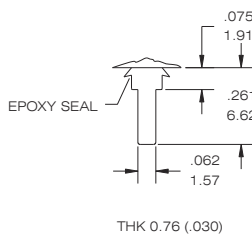
B STD



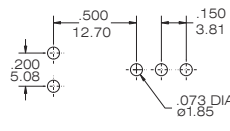
C PRINTED CIRCUIT



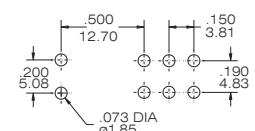
D QUICK CONNECT



NE8701-A5



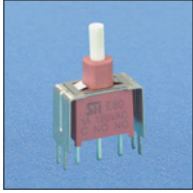
NE8702-A5

**CONTACT MATERIAL OPTION**

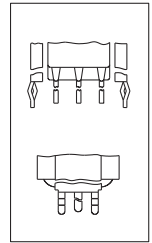
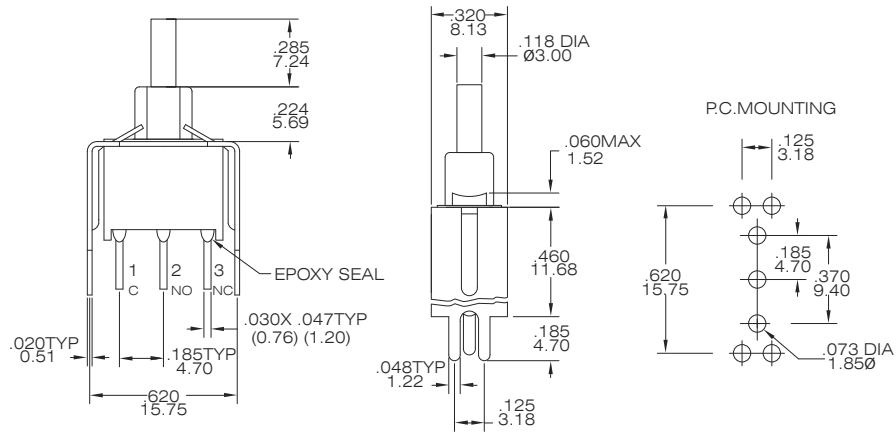
CODE	CONTACT MATERIAL	TERMINAL MATERIAL	RATING
Q	Silver plated	Silver plated	1A @ 120V AC or 28 V DC;
R	Gold plated over nickel plated	Gold plated over nickel plated	0.4 VA MAX@ 20V AC or DC MAX
G	Gold plated over silver plated	Gold plated over silver plated	0.4 VA MAX @ 20 V AC or DC MAX or 1 A @ 120V AC or 28 V DC;

### VERTICAL SUPPORT BRACKET OPTION

(only apply the straight type terminal. Please build the terminal option is "C" code)

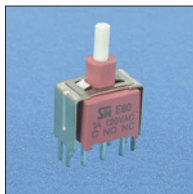


#### S20/V20 (SPDT)

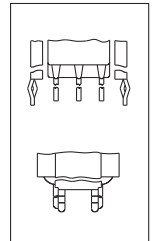
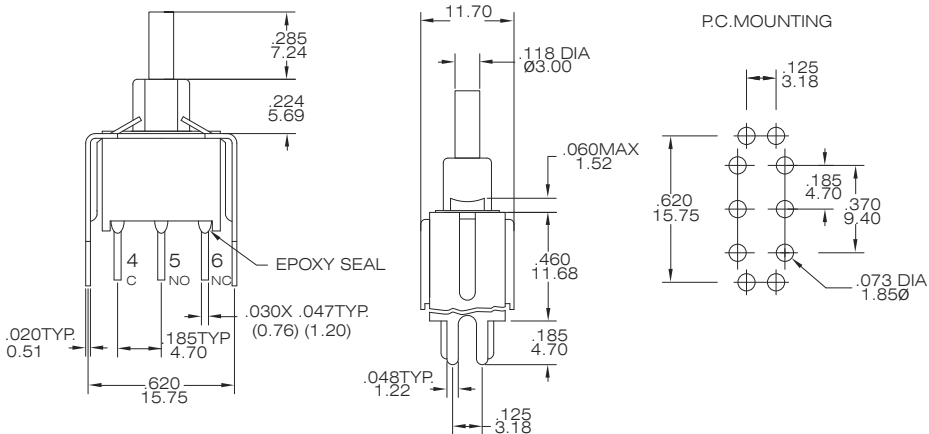


SNAP-IN  
V 20

NE8701-NCQ-S20



#### S20/V20 (DPDT)

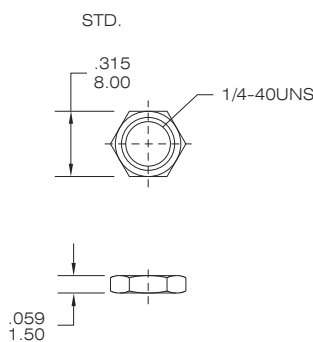


SNAP-IN  
V 20

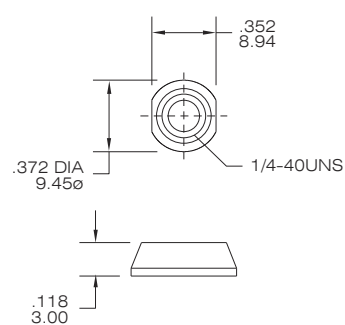
NE8702-NCQ-S20

### The hard ware of E80-P push button switches

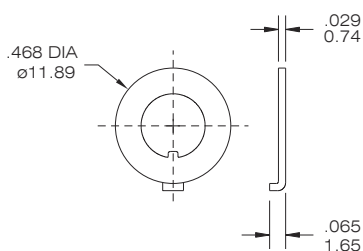
#### NUT



#### DRESS NUT



#### LOCKING RING



#### LOCK WASHER

