



## SPECIFICATIONS

CONTACT RATING: 0.2A, 36 VDC

ELECTRICAL LIFE: 50,000 cycles

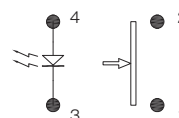
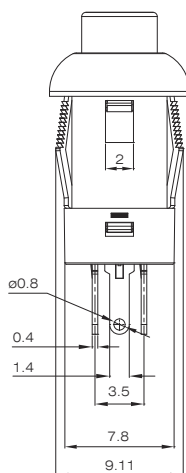
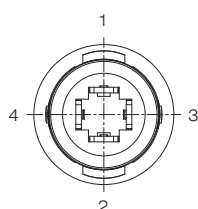
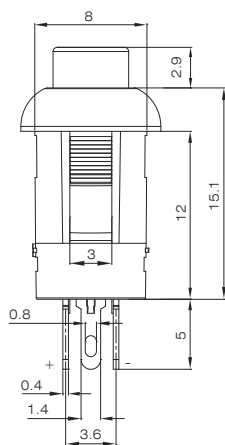
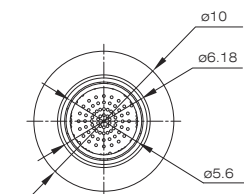
CONTACT RESISTANCE: 50 mΩ max. (initial)

INSULATION RESISTANCE: 100 MΩ min. 500 VDC

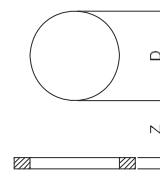
DIELECTRIC STRENGTH: 500 VAC/1 min.

OPERATING TEMPERATURE: 0°C to +85°C

## DIMENSIONS



CIRCUIT



CUT-OUT

## HOW TO ORDER

EPS11

Model

Terminal type  
1 = Solder  
2 = P.C.B  
3 = SMT

Pole  
1 = Single pole  
2 = Double pole

Function  
0 = Momentary  
1 = Self-Lock

Cap  
0 = Without cap  
1 = With cap

RoHS code:  
H = RoHS Compliant

LED color  
N = None  
R = Red  
Y = Yellow  
U = Blue  
G = Green