

EPS13



## SPECIFICATIONS

CONTACT RATING: 500mA@48VACMAX/200mA@50VDCMAX/  
200mA@250VACMAX

ELECTRICAL LIFE: 500,000 cycles

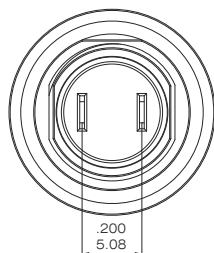
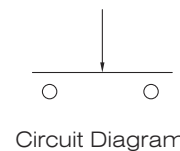
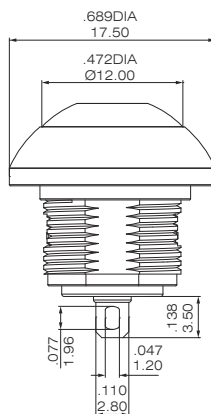
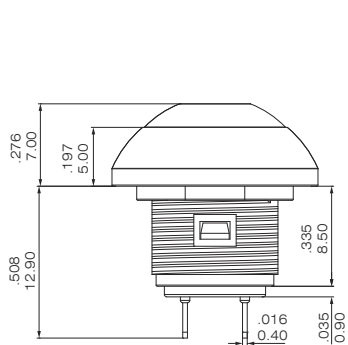
CONTACT RESISTANCE: 50 mΩ max.

INSULATION RESISTANCE: 1000 MΩ min. 500 VDC

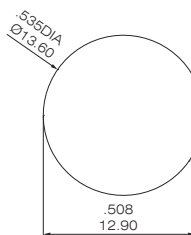
DIELECTRIC STRENGTH: 1500 VAC/1 min.

OPERATING TEMPERATURE: -40 °C to +85 °C

## DIMENSIONS



P.C.MOUNTING



## HOW TO ORDER

EPS13 - 11 M - B1 - F2 - B R - D 3 - A 3 - E - H

Metal body

Switch Function	
11	2P
13	3P

Operation type	
M	Reset
Z	With lock
I	Indicator lamp

Body type	
B1	Round
D1	Square

Body color	
N	Nickel
R	Gold
C	Chrome
1	Natural
2	Black
F2	Oxidation black

Terminal	
B	Solder lug
D	Quick connect
S	Screw

Contact material	
Q	Silver plated
R	Gold plated
G	Gold over silver

RoHS Compliant

Epoxy	
/	None seal
E	Epoxy seal

Cap color	
2	Black
3	Red
4	Blue
6	Green
9	Gray

Cap type	
A	Flat
H	Round

LED Color	
1	White
3	Red

LED type	
/	No LED
D	Point luminescence