

**ES40-P****Sealed SMT Sub-Miniature Push button Switches****FEATURES:**

1. Sealed construction - internal actuator o-ring and epoxy terminal seal standard
2. Carry the IP67 approvals
3. Surface mounting (SMT)
4. Tape and Reel package

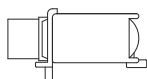
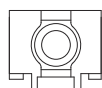
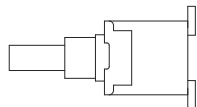
cUL US
UL 61058

**SPECIFICATIONS**

CONTACT RATING:R- 0.4 VA max @ 20 V AC or DC
ELECTRICAL LIFE:30,000 make-and-break cycles at full load
CONTACT RESISTANCE: 20 mΩ max. initial @2-4 VDC,100 mA
INSULATION RESISTANCE: 1,000 MΩ min.
DIELECTRIC STRENGTH: 1,500 V RMS @ sea level.
DEGREE OF PROTECTION : IP67
OPERATING TEMPERATURE: -30°C to +85°C

MATERIALS

CASE and BUSHING - glass filled nylon 4/6,flame retardant heat stabilized (UL94V-0)
PLUNGER - Thermoplastic polyester or glass filled nylon (UL94V-0)
CONTACT AND TERMINAL - Copper alloy , silver plated
SWITCH SUPPORT - Copper alloy , tin plated
TERMINAL SEAL - Epoxy

**How do you modify the switches you need!!**

(A) E S - 2 0 - C V - 1 - R - T/R -

Switches Function		
ES-20	SPST	off-mom. Sideward terminal
ES-20A	SPDT	on-mom. Sideward terminal
ES-26	SPST	off-mom. Backward terminal
ES-26A	SPDT	on-mom. Backward terminal
ES-27	SPST	off-mom. Backward terminal
ES-27A	SPDT	on-mom. Backward terminal

Cap	
CV	5.08
CV1	7.62

Cap color	
1	white
2	black
3	red
4	orange
5	yellow
6	green
7	blue
9	gray

Plunger	
(none)	5.46(std.)
SP	3.00
FP	flush type

Contact Material	
Q	silver plated
R	gold plated
G	gold over silver
K	gold / tin

Package	
(none)	polly bag
T/R	tape & reel

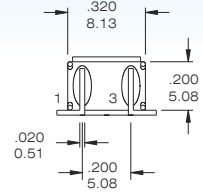
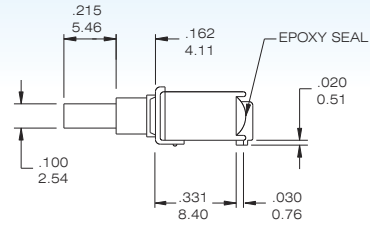
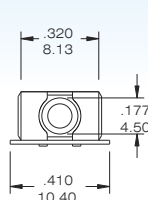
RoHS code	
H = RoHS Compliant	



SPST

Model No.	Switching position	
ES-20	Off	Mom
Term. Comm.	open	1-3

SCHEMATIC



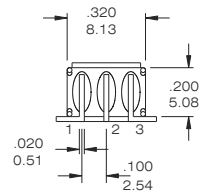
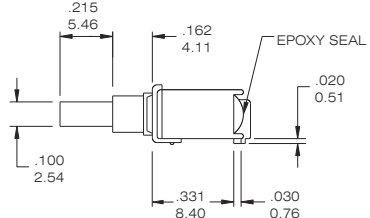
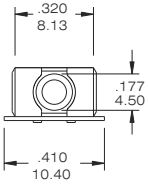
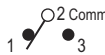
ES-20- R



SPDT

Model No.	Switching position	
ES-20A	On	Mom
Term. Comm.	2-1	2-3

SCHEMATIC



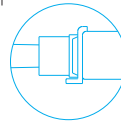
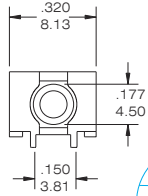
ES-20A- R



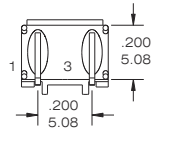
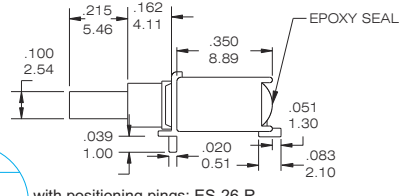
SPST

Model No.	Switching position	
ES-26	Off	Mom
ES-27	Off	Mom
Term. Comm.	open	1-3

SCHEMATIC



with positioning pins: ES-26-R
without positioning pins: ES-27-R



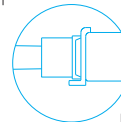
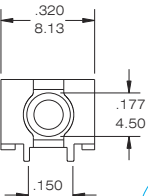
ES-26-R / ES-27-R



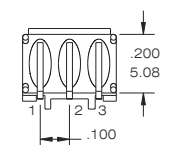
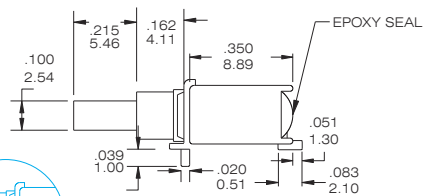
SPDT

Model No.	Switching position	
ES-26A	On	Mom
ES-27A	On	Mom
Term. Comm.	2-1	2-3

SCHEMATIC



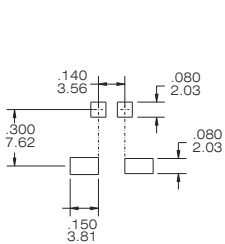
with positioning pins: ES-26A-R
without positioning pins: ES-27A-R



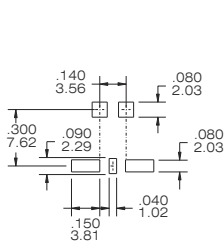
ES-26A-R / ES-27A-R

Cap and Actuator Option / Cap color Option / Plunger Option please see the page D19

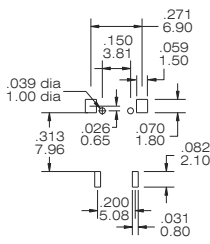
THE P.C.B MOUNTING



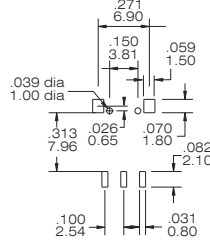
ES-20



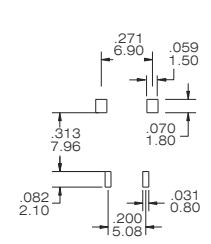
ES-20A



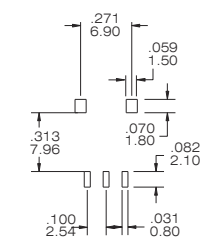
ES-26



ES-26A



ES-27



ES-27A

CONTACT MATERIAL OPTIONS

CODE	CONTACT MATERIAL	TERMINAL MATERIAL	RATING
Q	Silver plated	Silver plated	1 A @ 120V AC or 28 V DC;
R	Gold plated over nickel plated	Gold plated over nickel plated	0.4VA MAX @ 20 V AC or DC MAX
G	Gold plated over silver plated	Gold plated over silver plated	0.4 VA MAX @ 20 V AC or DC MAX or 1 A @ 120V AC or 28 V DC;
K	Gold plated over nickel plated	Tin over nickel plated	0.4VA MAX @ 20 V AC or DC MAX