



### SPECIFICATIONS

**CONTACT RATING:** 5A/15VDC.

**INITIAL CONTACT RESISTANCE:** 20mΩ(initial).

**INSULATION RESISTANCE:** 1000MΩ

(500VDC between open contact).

**DIELECTRIC STRENGTH:** 1500V RMS@sea level.

**ELECTRICAL LIFE:** 6000 cycles min.

**OPERATION FORCE FOR THE ROCKER:** 4~9N.

### MATERIALS

**HOUSING:** Nylon6/6 UL94V0 black.

**ROCKER:** Nylon6/6 UL94V2 black.

**PIN:** Brass,Nickel plated.

**PIN TERMINAL:** Brass,Coin silver,Silver plated.

**BREAK TERMINAL:** Brass,Silver plated.

**TIP TERMINAL:** Stainless steel,Silver plated.

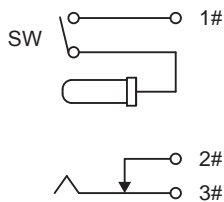
**CONTACT:** Brass,Coin silver,Silver plated.

**SIDE:** Brass,Nickel plated.

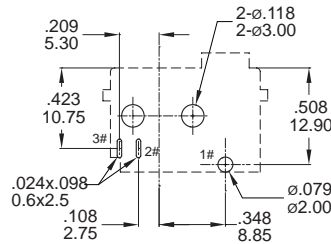
**SPRING:** Spring steel.



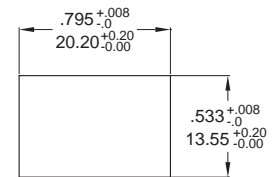
### ELECTRICAL SCHEMATIC



SPST



PCB LAYOUT  
BOTTOM VIEW



PANEL CUT-OUT

### DIMENSION

mm	
Dimensions	PIN Ø A
MODEL	
LRJ-001	ø2.50
LRJ-002	ø2.00
LRJ-003	ø2.10

