

SPECIFICATIONS

- MAXIMUM RATING : 50VDC. 100mA.
- MINIMUM RATING : 20VDC. 10A.
- CONTACT RESISTANCE : 100mΩ MAX.
- INSULATION RESISTANCE : 100VDC-1000M MIN.
- WITHSTAND VOLTAGE : 250VAC-1 MINUTE
- ROTARY TORQUE : 40~200gf.cm
- TOTAL ROTARY ANGLE : 360° (4,10,16 STEPS)
- LIFE CYCLE : 10,000 STEPS

HOW TO ORDER

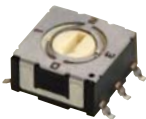
RSC-1ARM

Terminal type :  
K: Through hole & Kink type  
H: Through hole type  
M: SMT type

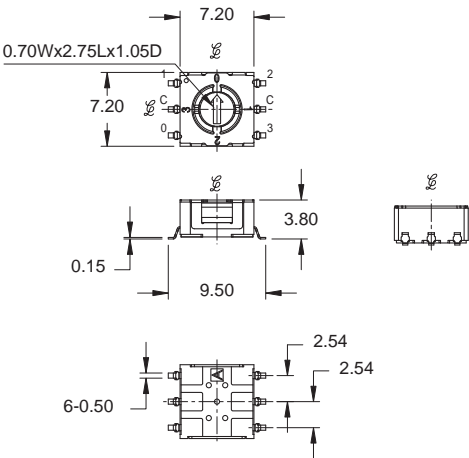
Code type :  
R: Real code  
C: Complementary code

Positions of number :  
4: 4 Positions  
A: 10 Positions  
F: 16 Positions

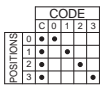
Rotor style:  
1: 1: 3: 3:



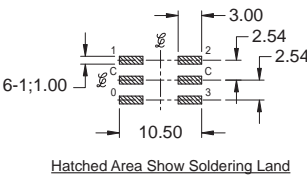
RSC-14RM



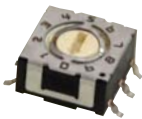
CIRCUIT CHART



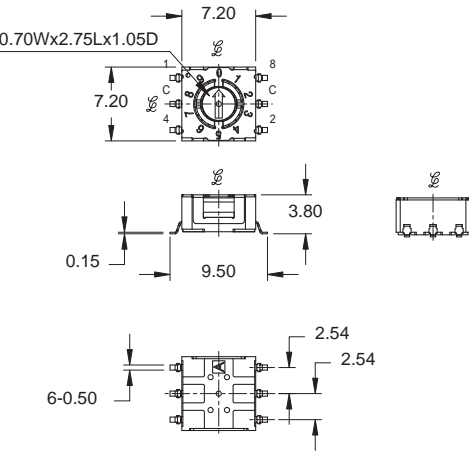
P.C.B. LAYOUT



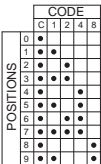
NO.	PART NAME	MATERIAL	Q'TY	FINISHING
1	FRAM	LCP+G	1	
2	COVER	SUS	1	
3	ROTOR	PA+G	1	Au PLATED
4	TERMINAL	PBS	6	Au PLATED
5	CONTACT PLATE	BeCu	1	
6	O-RING	SILICONE RUBBER	1	
7	SPACER	SUS	1	



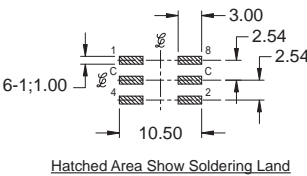
RSC-1ARM



CIRCUIT CHART



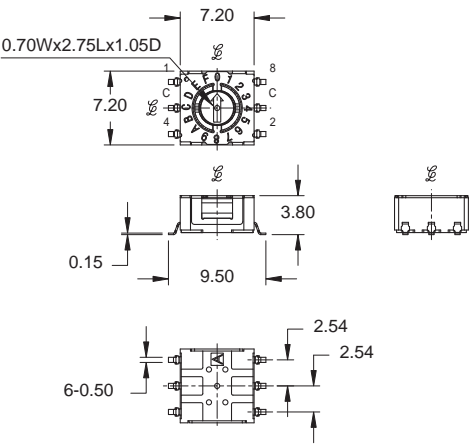
P.C.B. LAYOUT



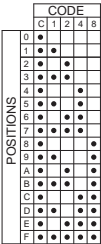
NO.	PART NAME	MATERIAL	Q'TY	FINISHING
1	FRAM	LCP+G	1	
2	COVER	SUS	1	
3	ROTOR	PA+G	1	Au PLATED
4	TERMINAL	PBS	6	Au PLATED
5	CONTACT PLATE	BeCu	1	
6	O-RING	SILICONE RUBBER	1	
7	SPACER	SUS	1	



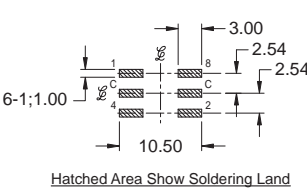
RSC-1FRM



CIRCUIT CHART



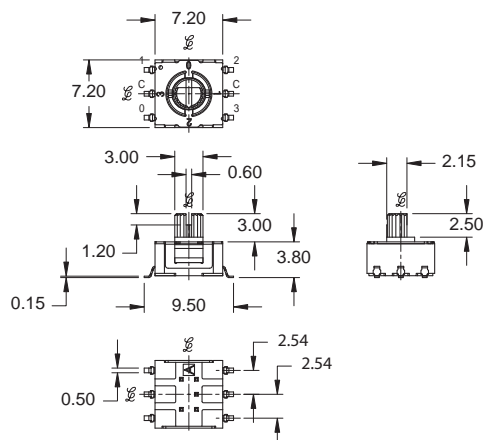
P.C.B. LAYOUT



NO.	PART NAME	MATERIAL	Q'TY	FINISHING
1	FRAM	LCP+G	1	
2	COVER	SUS	1	
3	ROTOR	PA+G	1	Au PLATED
4	TERMINAL	PBS	6	Au PLATED
5	CONTACT PLATE	BeCu	1	
6	O-RING	SILICONE RUBBER	1	
7	SPACER	SUS	1	



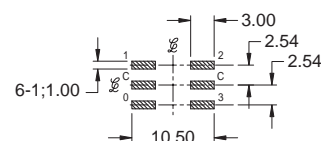
RSC-24RM



CIRCUIT CHART

		CODE				
		C	0	1	2	3
POSITIONS	0	●	●			
	1	●		●		
	2	●			●	
	3	●				●

P.C.B. LAYOUT

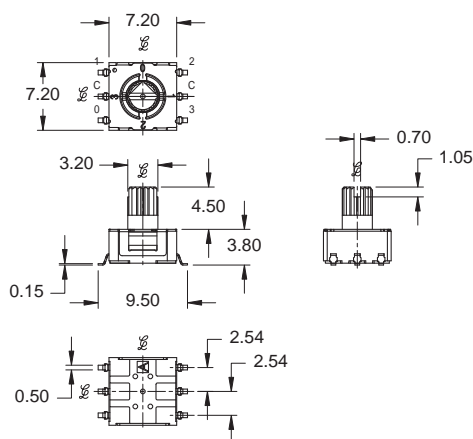


Hatched Area Show Soldering Land

NO.	PART NAME	MATERIAL	QTY	FINISHING
1	FRAM	PA+G	1	
2	COVER	SUS	1	
3	ROTOR	LCP+G	1	Au PLATED
4	TERMINAL	PBS	6	Au PLATED
5	CONTACT PLATE	BeCu	1	
6	O-RING	SILICONE RUBBER	1	
7	SPACER	SUS	1	



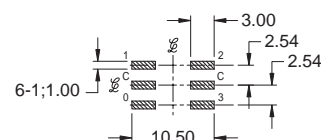
RSC-34RM



CIRCUIT CHART

		CODE				
		C	0	1	2	3
POSITIONS	0	●	●			
	1	●		●		
	2	●			●	
	3	●				●

P.C.B. LAYOUT

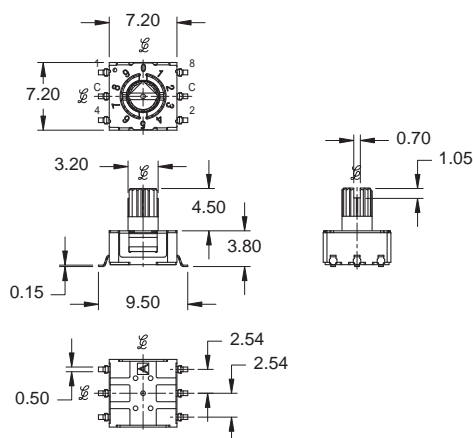


Hatched Area Show Soldering Land

NO.	PART NAME	MATERIAL	QTY	FINISHING
1	FRAM	LCP+G	1	
2	COVER	SUS	1	
3	ROTOR	PA+G	1	Au PLATED
4	TERMINAL	PBS	6	Au PLATED
5	CONTACT PLATE	BeCu	1	
6	O-RING	SILICONE RUBBER	1	
7	SPACER	SUS	1	



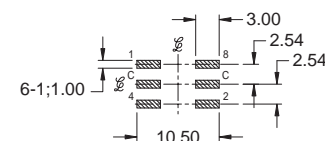
RSC-3ARM



CIRCUIT CHART

		CODE				
		C	1	2	4	8
POSITIONS	0	●				
	1	●	●			
	2	●				
	3	●		●		
	4	●				●
	5	●	●			●
	6	●			●	●
	7	●	●	●	●	
	8	●				●
	9	●				

P.C.B. LAYOUT

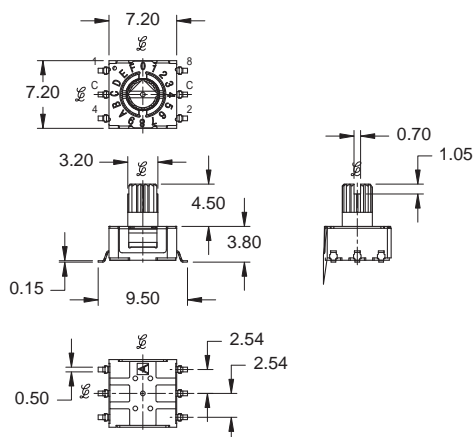


Hatched Area Show Soldering Land

NO.	PART NAME	MATERIAL	QTY	FINISHING
1	FRAM	LCP+G	1	
2	COVER	SUS	1	
3	ROTOR	PA+G	1	Au PLATED
4	TERMINAL	PBS	6	Au PLATED
5	CONTACT PLATE	BeCu	1	
6	O-RING	SILICONE RUBBER	1	
7	SPACER	SUS	1	



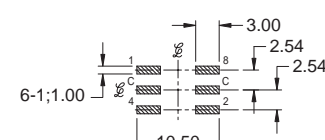
RSC-3FRM



CIRCUIT CHART

		CODE				
		C	1	2	4	8
POSITIONS	0	●				
	1		●			
	2	●		●		
	3	●	●	●		
	4				●	
	5	●	●			
	6			●	●	
	7			●	●	
	8					●
	9	●	●			●
	A			●		●
	B	●				
	C	●			●	
	D	●	●		●	
	E	●		●	●	●
	F	●	●			

P.C.B. LAYOUT



Hatched Area Show Soldering Land

NO.	PART NAME	MATERIAL	QTY	FINISHING
1	FRAM	LCP+G	1	
2	COVER	SUS	1	
3	ROTOR	PA+G	1	Au PLATED
4	TERMINAL	PBS	6	Au PLATED
5	CONTACT PLATE	BeCu	1	
6	O-RING	SILICONE RUBBER	1	
7	SPACER	SUS	1	