

# MPB19 Series

19mm Metal Pushbutton Switches



## SPECIFICATIONS

**RATING** : 1th 5A/250VAC resistive load 3A/250VAC  
**CONTACT RESISTANCE** : 50 mΩ max. @ 1A 12VDC (initial value)  
**INSULATION RESISTANCE** : 1,000 MΩ min. at 500VDC  
**DIELECTRIC STRENGTH** : 2,000V RMS @ sea level  
**OPERATION TEMPERATURE** : -20°C to 55°C  
**MECHANICAL LIFE** : Momentary 1,000,000 cycles  
Self-lock 500,000 cycles  
**ELECTRICAL LIFE** : 50,000 make-and-break cycles at full load  
**TORQUE** : 5~14Nm  
**PANEL THICKNESS** : 10mm (Ø19.20mm)  
**OPERATION PRESSURE** : 1Pole 2.5±1N / 2Poles 3.5±1N  
**TRAVEL** : About 3.2mm  
**INGRESS PROTECTION** : IP67, IK10(Stainless)

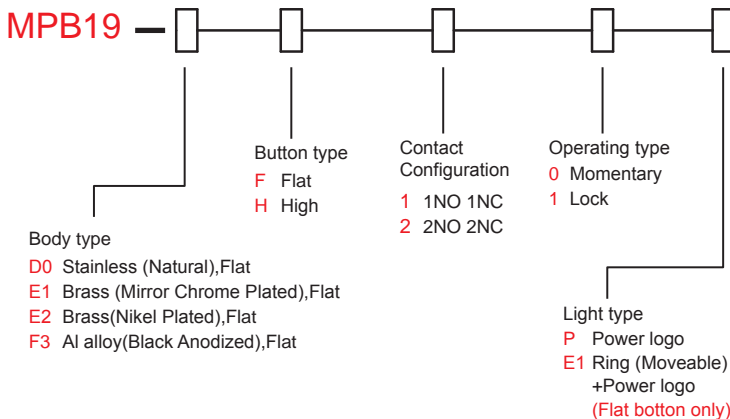
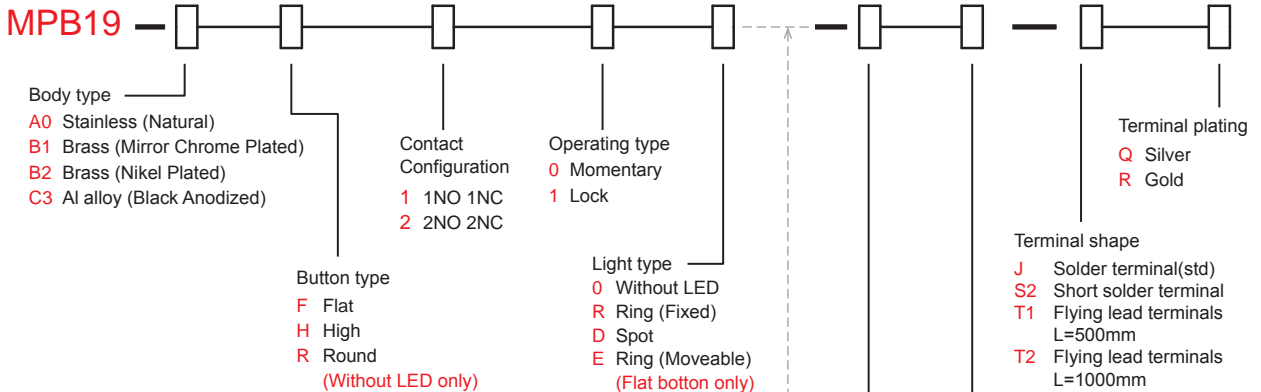
## MATERIALS

**BUSHING** : Stainless Steel / Nickel plated brass  
/ Aluminum alloy  
**BASE** : PBT(UL 94-V0) , PC(UL 94-V2)  
**ACTUATOR** : PC(UL 94-V2) ; Stainless Steel  
/ Nickel plated brass / Aluminum alloy  
**INNER ASSEMBLY** : POM / PA66.  
**SPRING** : Spring steel.  
**SEALING** : Silicone.  
**O-Ring** : Silicone.  
**TERMINAL** : Brass, with silver or gold plated.  
**CONTACT** :  
Q=Copper, Silver plated.  
R=Brass, Coin silver, Gold plated  
**HEX NUT** : Nickel plated brass.

## HOW TO ORDER



MODEL NO. BODY TYPE BUTTON TYPE CONTACT CONFIGURATION OPERATING TYPE LIGHT TYPE LED COLOR LED VOLTAGE TERMINAL SHAPE TERMINAL PLATING



LED Color	
ITEM NO	COLOR
0	Without LED
1	White
3	Red
5	Yellow
6	Green
7	Blue
DUAL COLOR LED	
A	Red&Green
B	Red&Blue
D	Blue&Yellow
G	Red&Yellow
H	Green&Yellow
J	Orange&Green

LED Voltage (20mA)	
ITEM NO	VOLTAGE
0	Without Resistor
3	3V
6	6V
12	12V
24	24V
36	36V
110	110V
220	220V

EXAMPLE:  
MPB19-A0F100-JQ (Without LED)  
MPB19-A0F10R- [ ] - [ ] - [ ] - [ ] - [ ] - [ ] - [ ] - [ ] - [ ]  
LED color — LED voltage



MPB19  
Pushbutton Switches

# MPB19 Series

19mm Metal Pushbutton Switches

## CIRCUIT

POSITION 1

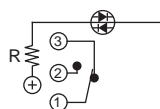


POSITION 2

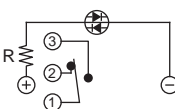


Without LED (1 Pole)

POSITION 1

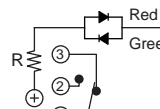


POSITION 2

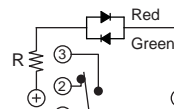


Single Color Led (1 Pole)

POSITION 1



POSITION 2



Dual Color Led (1 Pole)

POSITION 1

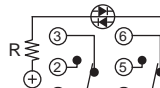


POSITION 2

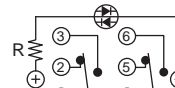


Without LED (2 Poles)

POSITION 1

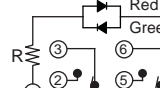


POSITION 2

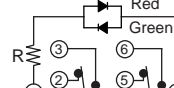


Single Color Led (2 Poles)

POSITION 1



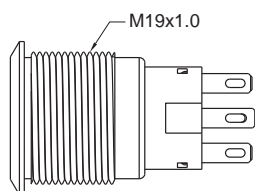
POSITION 2



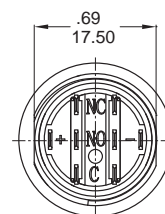
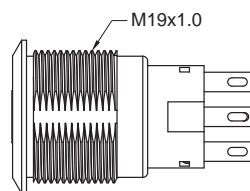
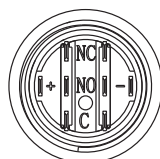
Dual Color Led (2 Poles)

## BODY TYPE

A0/B1/B2/C3 Body

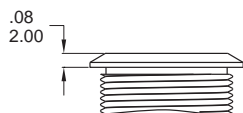


D0/E1/E2/F3 Body (Flat)



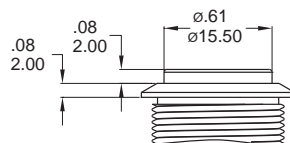
## BUTTON TYPE

F Flat Button

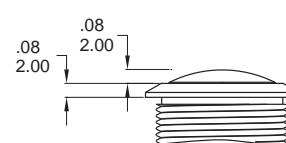


H High Button

\* Ring (Moveable) light type is inapplicable

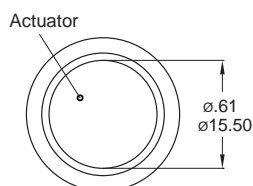


R Round Button

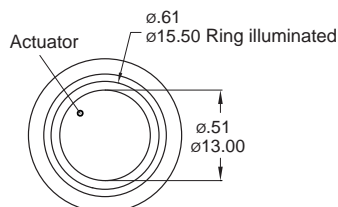


## LIGHT TYPE

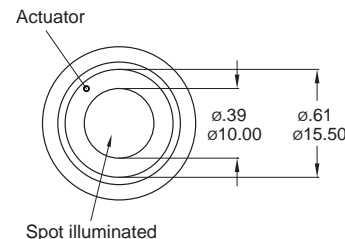
O Without LED



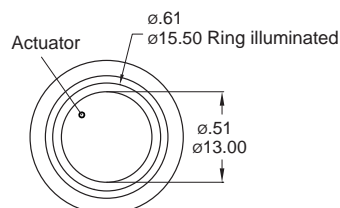
R Ring (Fixed)



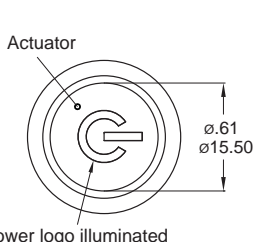
D Spot



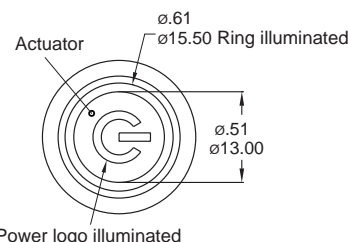
E Ring (Moveable)



P Power logo



E1 Ring (Moveable)+Power logo



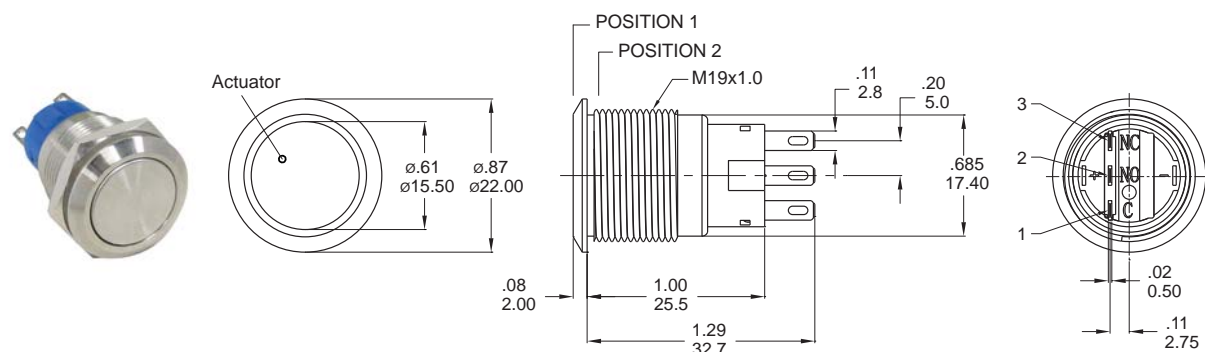
\* Only for A0,B1,B2,C3 body.

\* Only for D0,E1,E2,F3 body.

\* E1 light type only for D0,E1,E2,F3 body.

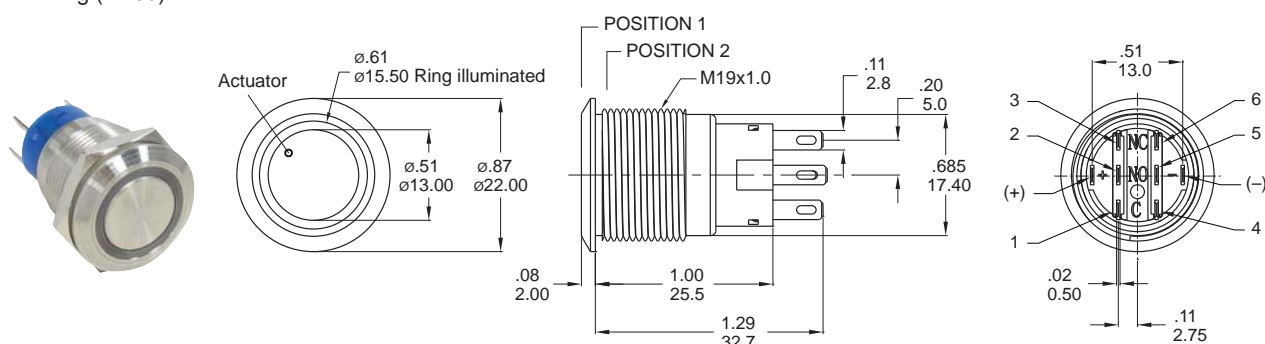
## FLAT BUTTON TYPE

0 Without LED



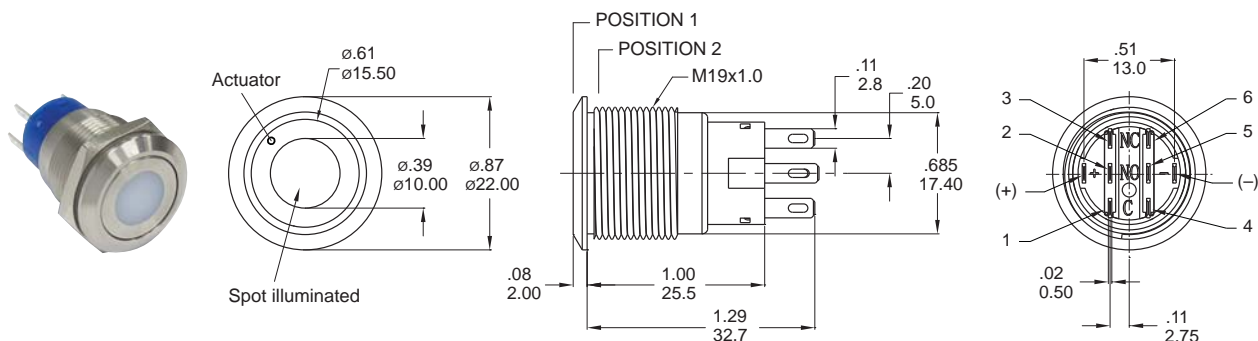
Part No. Shown : MPB19-A0F1-0-JQ

R Ring (Fixed)



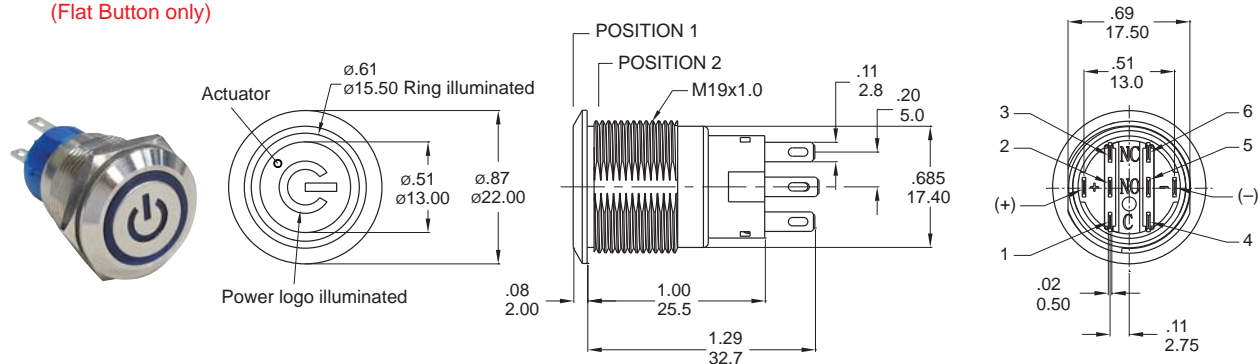
Part No. Shown : MPB19-A0F2-R- -JQ

D Spot



Part No. Shown : MPB19-A0F2-D- -JQ

E1 Ring (Moveable)+Power logo  
(Flat Button only)



Part No. Shown : MPB19-D0F2-E1- -JQ

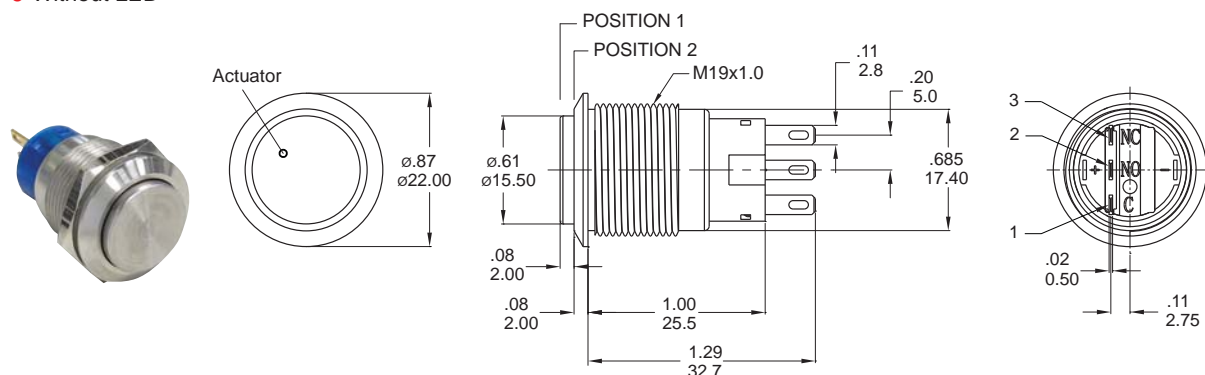


# MPB19 Series

19mm Metal Pushbutton Switches

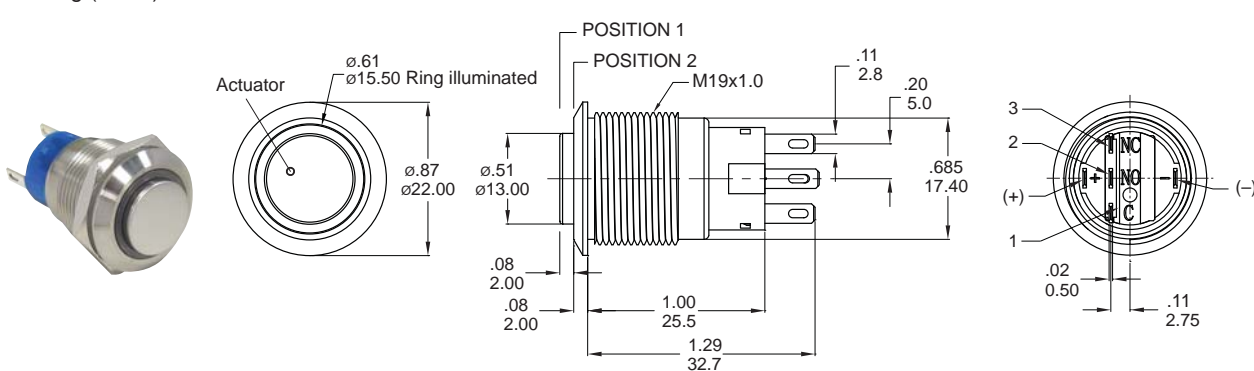
## HIGH BUTTON TYPE

**0** Without LED



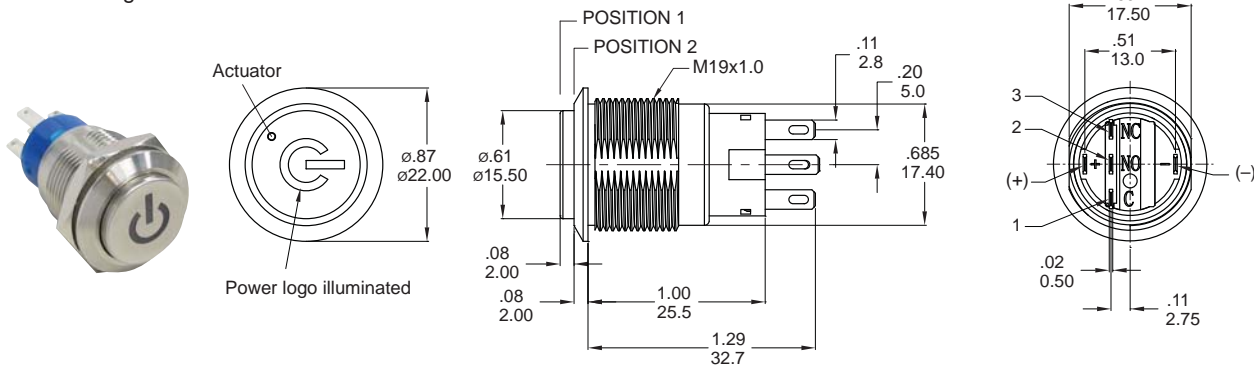
Part No. Shown : MPB19-A0H1 0-JQ

**R** Ring (Fixed)



Part No. Shown : MPB19-A0H1 R-JQ

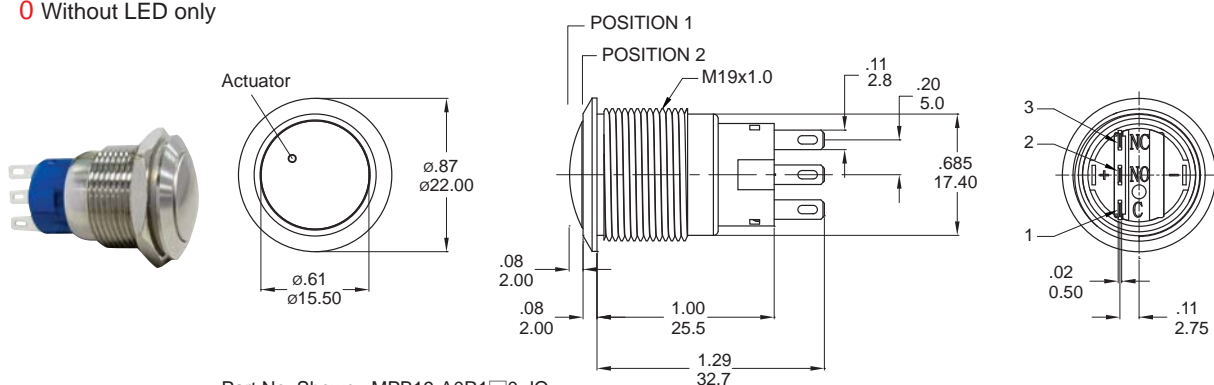
**P** Power logo



Part No. Shown : MPB19-D0H1 P-JQ

## ROUND BUTTON TYPE

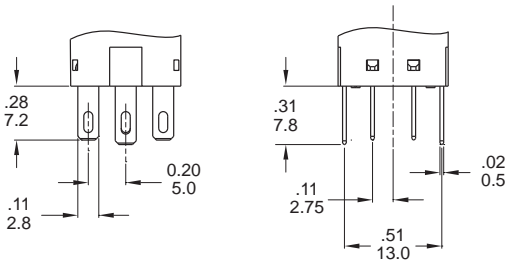
**0** Without LED only



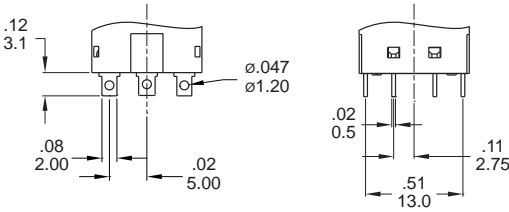
Part No. Shown : MPB19-A0R1 0-JQ

## TERMINAL TYPE

### J Solder terminal (std)

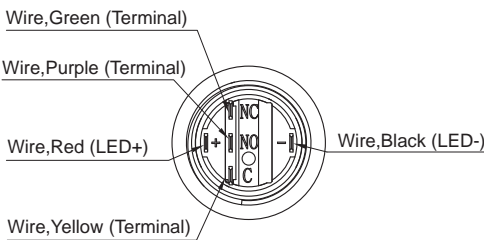
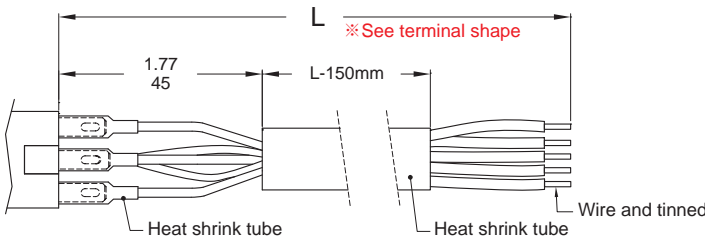


### S2 Short solder terminal



### Wire (Flying lead Terminals)

※ Wire=UL 3385,18AWG,300V(Black/Yellow/Green/Red/Purple)

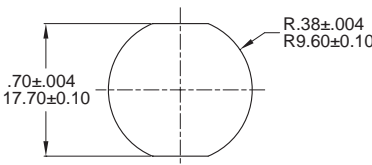
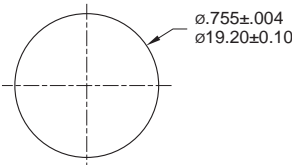


### O/R/D/E Light Type

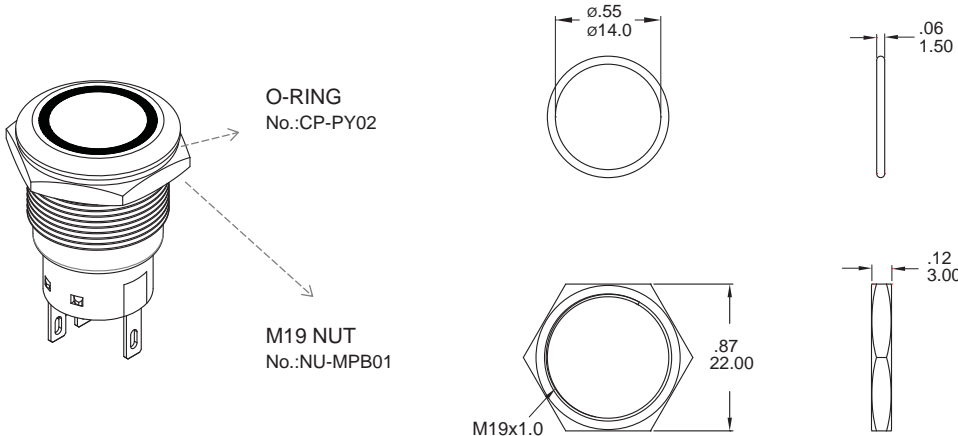
### P Light Type

### PANEL MOUNTING

Max. Panel thickness: 10.0mm[.39]



### ASSEMBLED VIEW



### O-RING INSTALLATION

Proposal	In front of the panel	Behind the panel
Installation Diagram		



MPB19  
Pushbutton Switches