



## SPECIFICATIONS

**RATING** : 1th 5A/250VAC resistive load 3A/250VAC  
**CONTACT RESISTANCE** : 50 mΩ max. @ 1A 12VDC (initial value)  
**INSULATION RESISTANCE** : 1,000 MΩ min. at 500VDC  
**DIELECTRIC STRENGTH** : 2,000V RMS @ sea level  
**OPERATION TEMPERATURE** : -20°C to 55°C  
**MECHANICAL LIFE** : Momentary 1,000,000 cycles  
Self-lock 500,000 cycles  
**ELECTRICAL LIFE** : 50,000 make-and-break cycles at full load  
**TORQUE** : 5~14Nm  
**PANEL THICKNESS** : 10mm (Ø25.20mm)  
**OPERATION PRESSURE** : 1Pole 2.5±1N / 2Poles 3.5±1N  
**TRAVEL** : About 3.2mm  
**INGRESS PROTECTION** : IP67, IK08(Stainless)

## MATERIALS

**BUSHING** : Stainless Steel / Aluminum alloy  
**BASE** : PBT(UL 94-V0) , PC(UL 94-V2)  
**ACTUATOR** : PC; Stainless Steel / Aluminum alloy  
**INNER ASSEMBLY** : POM / PA66.  
**SPRING** : Spring steel.  
**SEALING** : Silicone.  
**O-Ring** : Silicone.  
**TERMINAL** : Brass,with silver or gold plated.  
**CONTACT** :  
Q=Copper ,Silver plated.  
R=Brass,Coin silver,Gold plated  
**HEX NUT** : Nickel plated brass

## HOW TO ORDER

MODEL NO. BODY TYPE BUTTON TYPE CONTACT CONFIGURATION OPERATING TYPE LIGHT TYPE LED COLOR LED VOLTAGE TERMINAL SHAPE TERMINAL PLATING

**MPB25** — [ ] — [ ] — [ ] — [ ] — [ ] — [ ] — [ ] — [ ] — [ ]

Body type  
A0 Stainless (Natural)  
C3 Al alloy (Black Anodized)

Button type  
F Flat

Contact Configuration  
1 1NO 1NC  
2 2NO 2NC

Operating type  
0 Momentary  
1 Lock

Light type  
E Ring (Moveable)  
E2 Illuminated Ring with led color ,red/green/blue availavle only

Terminal shape  
J Solder terminal(std)  
T1 Flying lead terminals L=500mm  
T2 Flying lead terminals L=1000mm  
T3 Flying lead terminals L=1500mm  
T4 Flying lead terminals L=2000mm

Terminal plating  
Q Silver  
R Gold

**MPB25** — [ ] — [ ] — [ ] — [ ] — [ ] — [ ] — [ ] — [ ] — [ ]

Body type  
D0 Stainless (Natural),Flat

Button type  
F Flat

Contact Configuration  
1 1NO 1NC  
2 2NO 2NC

Operating type  
0 Momentary  
1 Lock

Light type  
E1 Illuminated ring with power logo only availavle in white cap  
E3 Illuminated ring with power logo with led color,red/green/blue availavle only

LED Color

ITEM NO	COLOR
0	Without LED
1	White
3	Red
5	Yellow
6	Green
7	Blue
DUAL COLOR LED	
A	Red&Green
B	Red&Blue
D	Blue&Yellow
G	Red&Yellow
H	Green&Yellow
J	Orange&Green

LED Voltage (20mA)

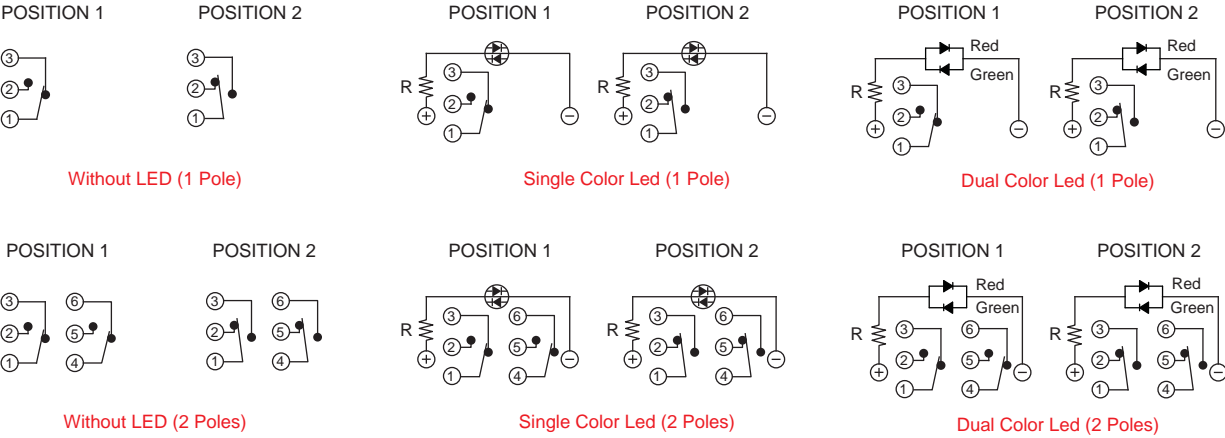
ITEM NO	VOLTAGE
0	Without Resistor
3	3V
6	6V
12	12V
24	24V
36	36V
110	110V
220	220V

EXAMPLE:  
MPB25-A0F10E-JQ (Without LED)  
MPB25-A0F10E- [ ] -JQ  
LED color LED voltage

# MPB25 Series

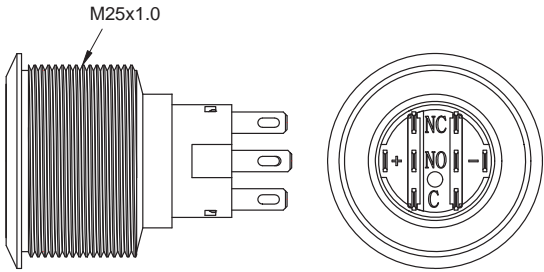
25mm Metal Pushbutton Switches

## CIRCUIT

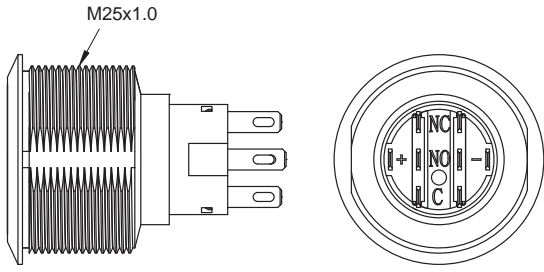


## BODY TYPE

A0/C3 Body

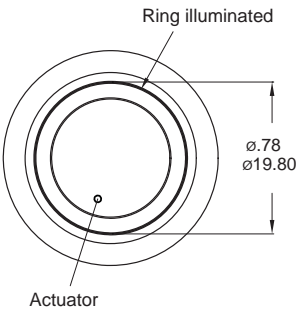


D0 Body (Flat)

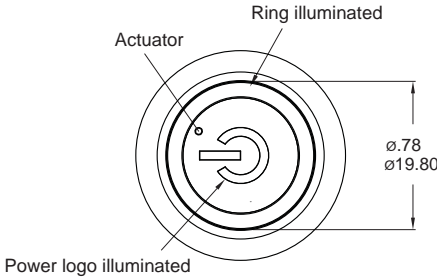


## LIGHT TYPE

E Ring (Moveable)



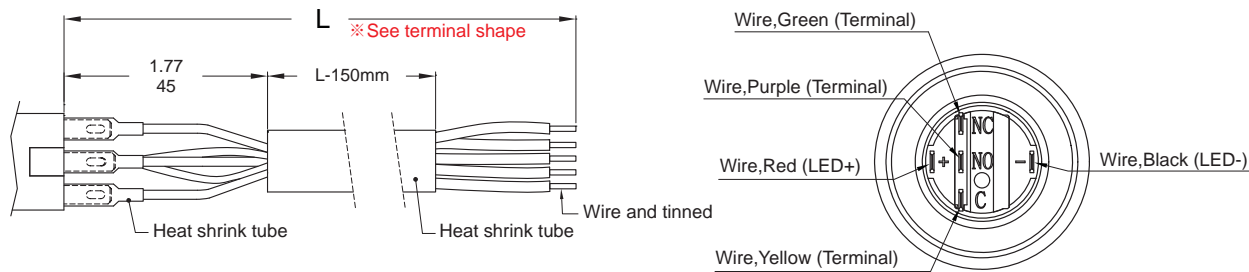
E3 Ring+Power logo



\* Only for D0 body type.

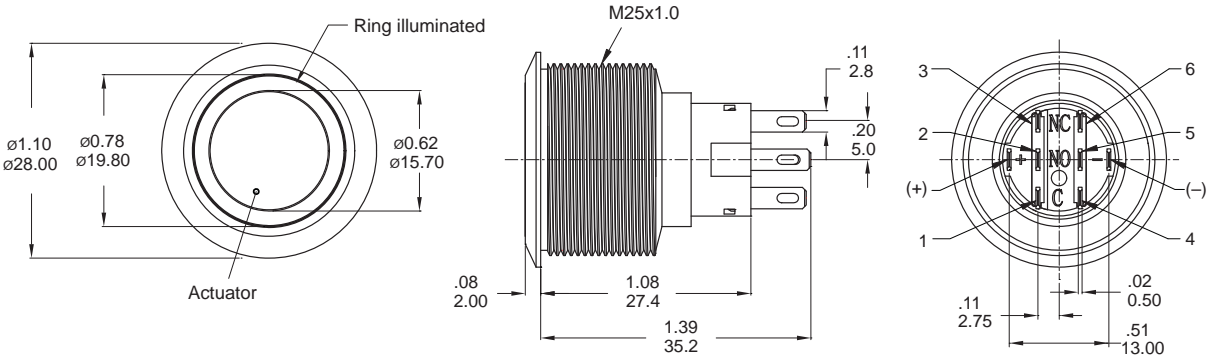
## Wire (Flying lead Terminals)

※ Wire=UL 3385,18AWG,300V(Black/Yellow/Green/Red/Purple)



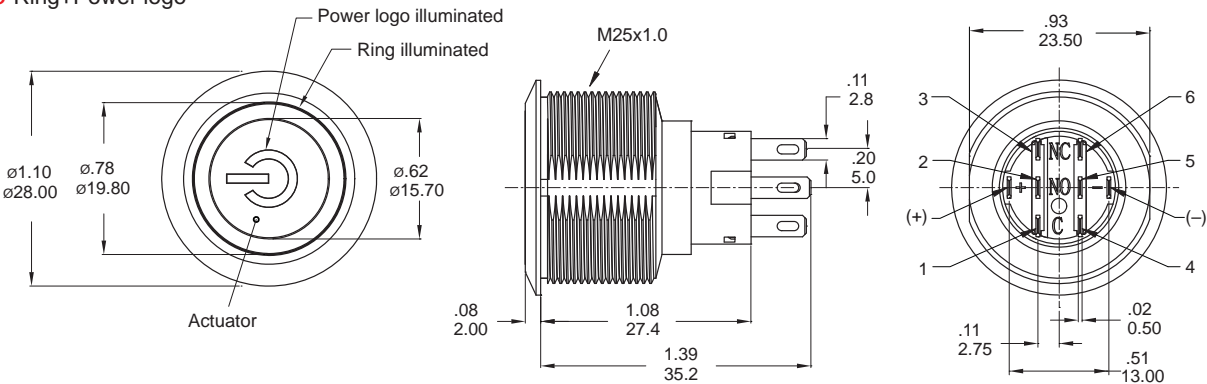
LIGHT TYPE

E Ring (Moveable)



Part No. Shown : MPB25-A0F2□E-□□-JQ

E3 Ring+Power logo

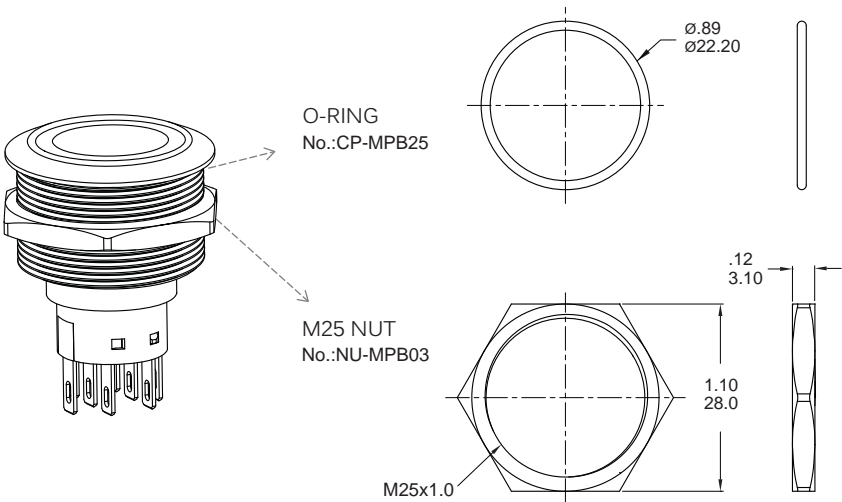


Part No. Shown : MPB25-D0F2□E3-□□-JQ



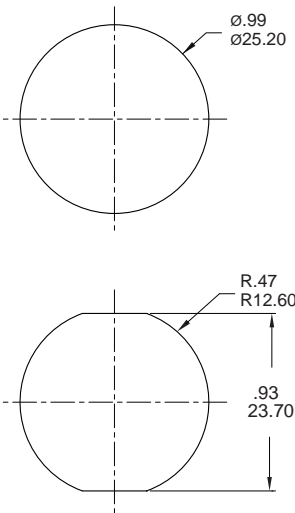
MPB25  
Pushbutton Switches

ASSEMBLED VIEW



PANEL MOUNTING

Max. Panel thickness: 10.0mm[.39]



O-RING INSTALLATION

Proposal	In front of the panel	Behind the panel
Installation Diagram		