

TZ Series

Piezo switches (Pulse)



SPECIFICATIONS

RATING : 5-24VADC/1A PULSE MODE.

OPERATING LIFE : 50 MILLION CYCLE MIN.

CONTACT RESISTANCE : 1Ω MAX.

OPERATING TEMPERATURE: -20°C to 65°C.

MATERIALS

BUSHING: Aluminum alloy.

SEALING : Silicone,EPOXY.

HEX NUT : Nickel plated brass.



HOW TO ORDER

MODEL NO.	BUSHING	CONTACT CONFIGURATION	RATING	BODY TYPE	BUTTON TYPE	LIGHT TYPE	CAP MARKING	LED COLOR	WIRE
TZ	<div><div></div><div></div></div>	<div><div></div><div></div></div>	<div><div></div><div></div></div>	<div><div></div><div></div></div>	<div><div></div><div></div></div>	<div><div></div><div></div></div>	<div><div></div><div></div></div>	<div><div></div><div></div></div>	<div><div></div><div></div></div>
	Bushing	Contact Configuration	Rating	Body type	Button type	Light type	Cap marking	LED Color	Wire
	19 19mm 22 22mm	N Momentary/Pulse	B4 5-24VADC / 1A	F1 Al alloy,Double flated (Natural anodized)	F Flat M Concave	N Without LED E Illuminated ring	00 No	3C RGB	D101 26AWG 150mm+2.54 1X6 Connector D102 26AWG 300mm+2.54 1X6 Connector

EXAMPLE:
TZ19N-B4-F1ME00-3CD101
Wire

TZ16 HOW TO ORDER

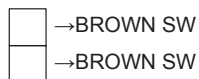
MODEL NO.	BUSHING	CONTACT CONFIGURATION	RATING	BODY TYPE	BUTTON TYPE	LIGHT TYPE	CAP MARKING	LED COLOR	WIRE
TZ	<div><div></div><div></div></div>	<div><div></div><div></div></div>	<div><div></div><div></div></div>	<div><div></div><div></div></div>	<div><div></div><div></div></div>	<div><div></div><div></div></div>	<div><div></div><div></div></div>	<div><div></div><div></div></div>	<div><div></div><div></div></div>
	Bushing	Contact Configuration	Rating	Body type	Button type	Light type	Cap marking	LED Color	Wire
	16 16mm	N Momentary/Pulse	B4 5-24VADC / 1A	C1 Al alloy,Non double flated (Natural anodized)	H High flat	N Without LED	00 No	00 Without LED	D301 26AWG 150mm+2.54 1x2 Connector D302 26AWG 300mm+2.54 1x2 Connector

EXAMPLE:
TZ16N-B4-C1HN00-00D301
Wire

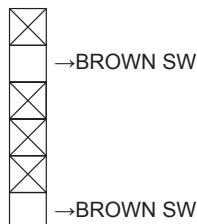
CIRCUIT

00 Without led application diagram

Available with 16mm Bushing only

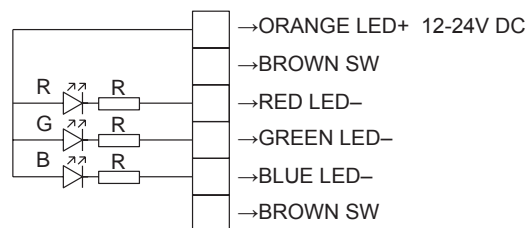


Available with 19mm/22mm Bushing only



3C Color led application diagram

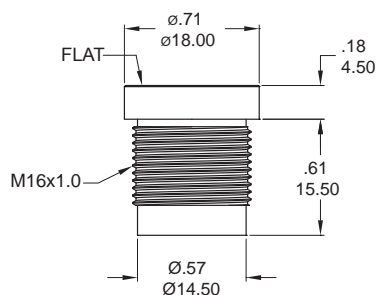
Available with 19mm/22mm Bushing only



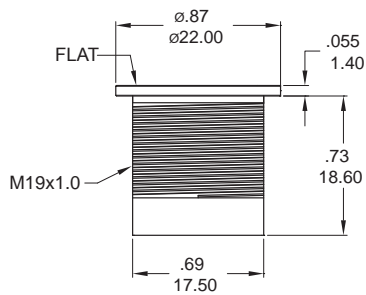
BUSHING

F Flat button type

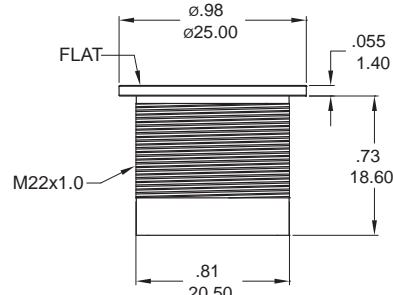
16mm Bushing



19mm Bushing

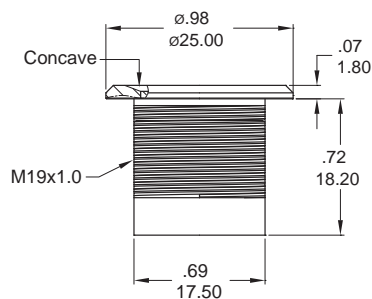


22mm Bushing

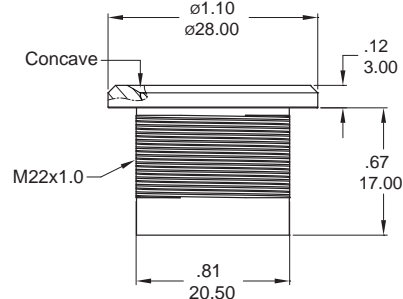


M Concave button type

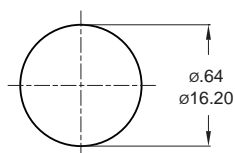
19mm Bushing



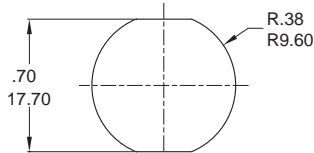
22mm Bushing



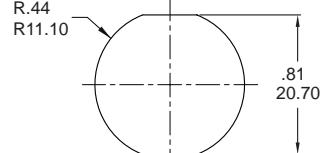
PANEL CUTOUT



Available with 16mm Bushing only
Max. Panel thickness: 8.0mm [.315] (Max.)



Available with 19mm Bushing only
Max. Panel thickness: 10.0mm [.394]



Available with 22mm Bushing only
Max. Panel thickness: 10.0mm [.394]



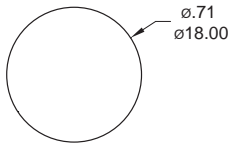
TZ
Piezo switches

TZ Series

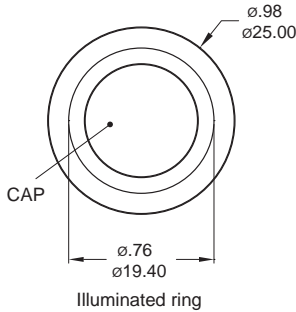
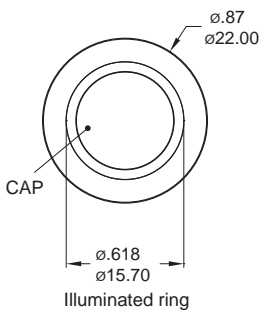
Piezo switches (Pulse)

LIGHT TYPE

F Flat button type (Without led)

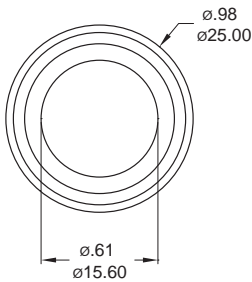


F Flat button type (Illuminated ring)

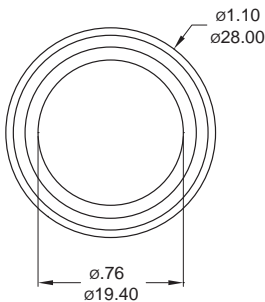


M Concave button type (Without led)

19mm Bushing

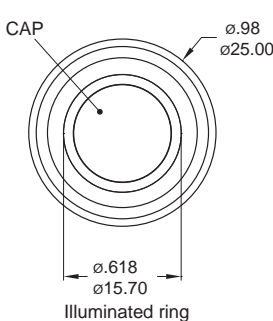


22mm Bushing

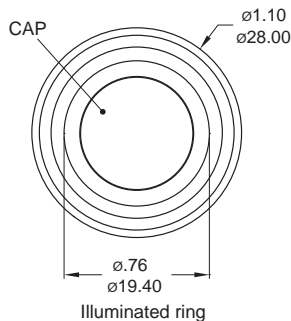


M Concave button type (Illuminated ring)

19mm Bushing

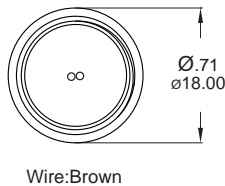
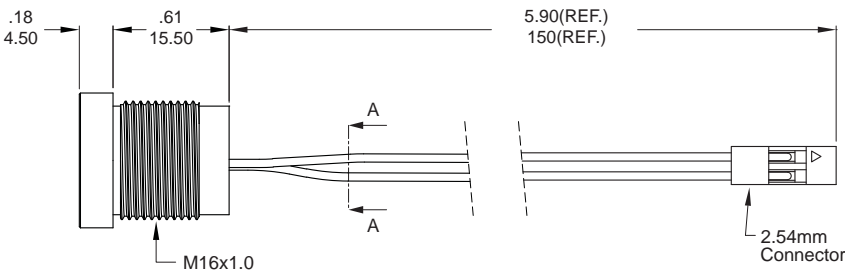


22mm Bushing



WIRE

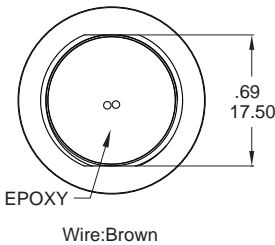
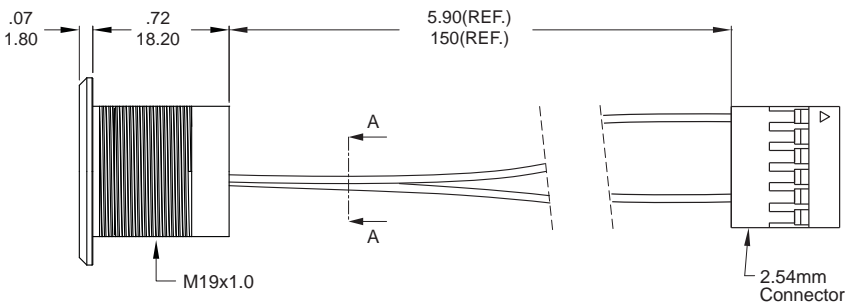
F Flat, Without led



Part No. Shown : TZ16N-B4-C1HN00-00D301

SECTION A-A

M Concave, Without led

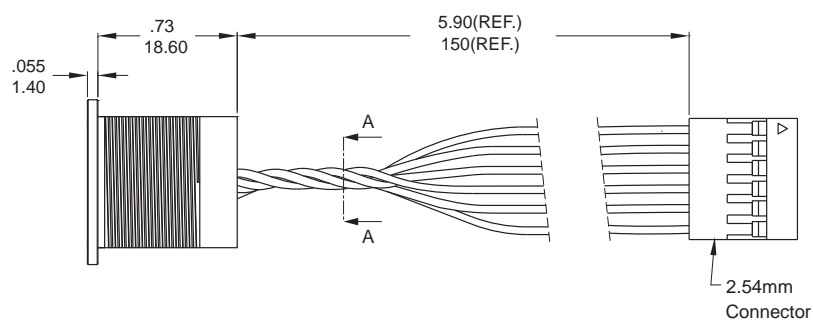


Part No. Shown : TZ19N-B4-F1MN00-00D101

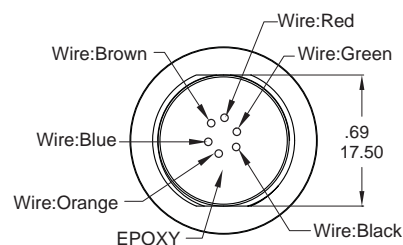
SECTION A-A

WIRE

F Flat,Illuminated ring

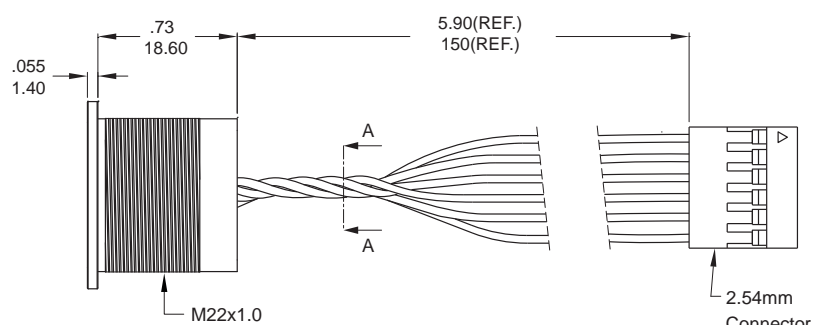


Part No. Shown : TZ19N-B4-F1FE00-3CD101

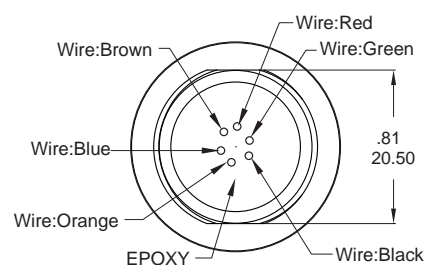


SECTION A-A

F Flat,Illuminated ring

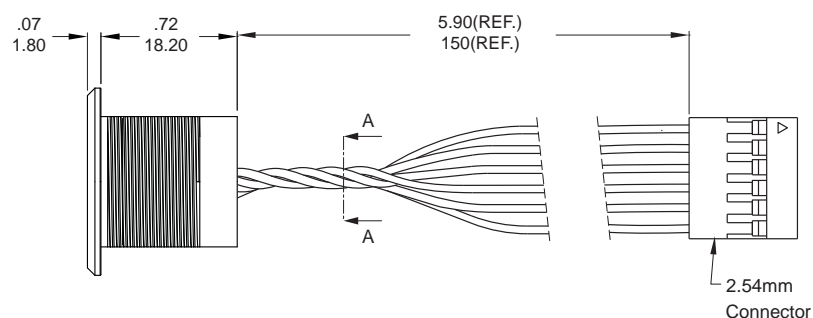


Part No. Shown : TZ22N-B4-F1FE00-3CD101

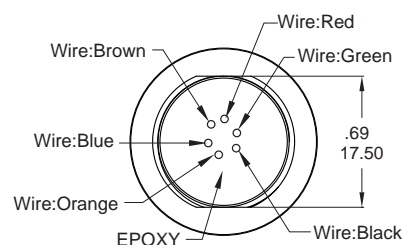


SECTION A-A

M Concave,Illuminated ring

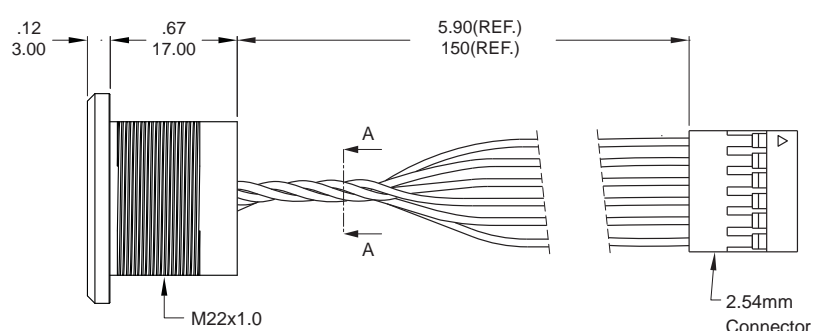


Part No. Shown : TZ19N-B4-F1ME00-3CD101

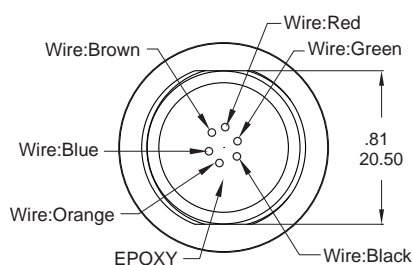


SECTION A-A

M Concave,Illuminated ring



Part No. Shown : TZ22N-B4-F1ME00-3CD101



SECTION A-A



TZ
Piezo switches