

MW25 Series

25mm High Current Metal Pushbutton Switches



SPECIFICATIONS

RATING : 16A, 26A 250/125VAC.

CONTACT RESISTANCE : 50 mΩ max. @ 1A 12VDC (initial value)

INSULATION RESISTANCE : 100 MΩ min. at 500VDC

DIELECTRIC STRENGTH : 1,500V RMS @ sea level

OPERATION TEMPERATURE : -25°C to 85°C

MECHANICAL LIFE : Momentary 1,000,000 cycles

Latching 500,000 cycles

ELECTRICAL LIFE : 16A /125&250VAC 50,000 CYCLES

26A /125&250VAC 10,000 CYCLES

OPERATION PRESSURE : 3.5±1.5N

TRAVEL : About 3.2mm

INGRESS PROTECTION : IP67, IK08(Stainless)

TORQUE: 1~3Nm.

MATERIALS

BUSHING : Stainless Steel / Aluminum alloy

BASE : PBT(UL 94-V0) , PC(UL 94-V2)

ACTUATOR : PC ; Stainless Steel / Aluminum alloy

INNER ASSEMBLY : POM / PA66.

SPRING : Steel.

SEALING : Silicone.

O-Ring : Silicone.

TERMINAL: Brass ,Silver plated.

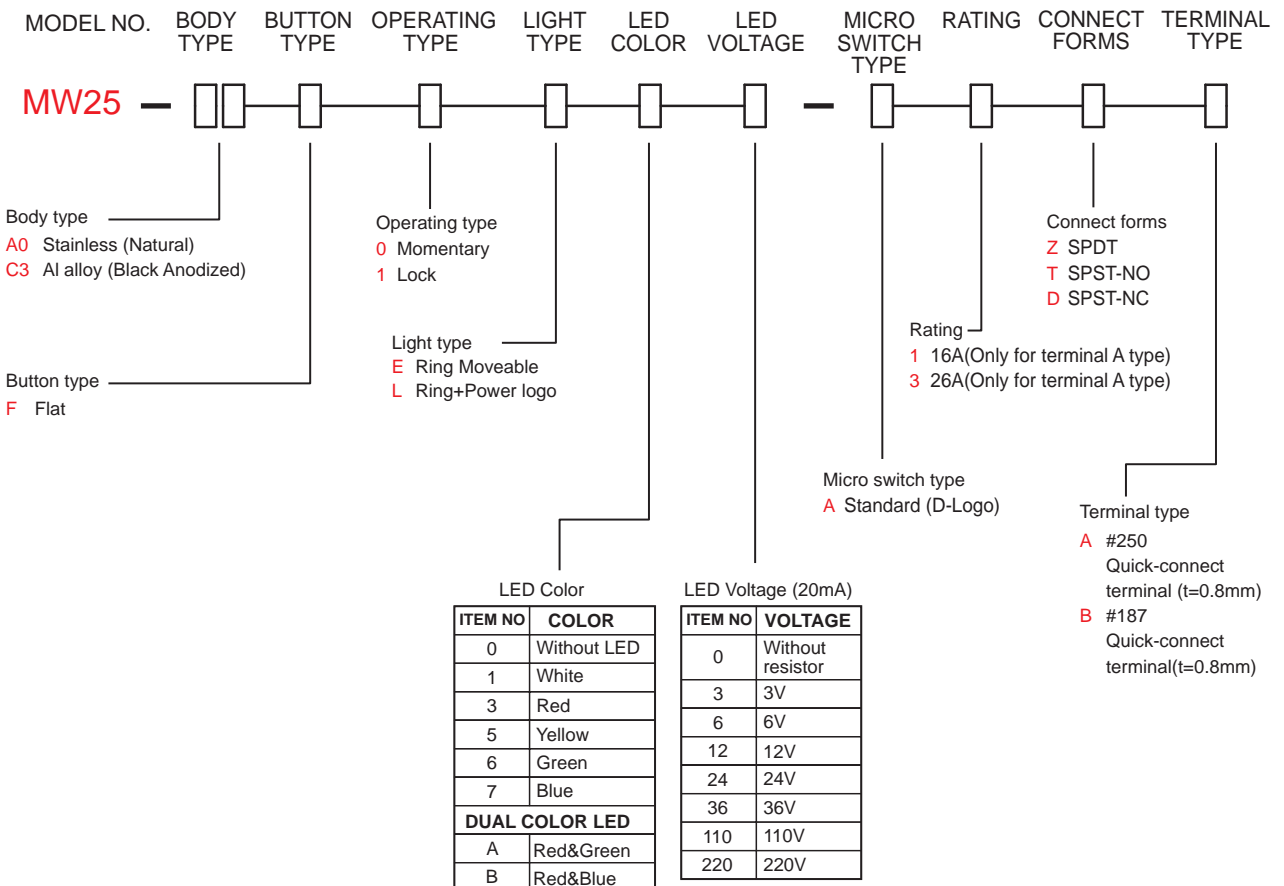
HEX NUT : Nickel plated brass.



IP 67
ACCORDING TO
EN 60529:1991+A1:2001
IEC 60529:2001



HOW TO ORDER



EXAMPLE:

MW25-A0F0E00-A3ZA (Without LED)

MW25-A0F0E [] [] -A3ZA

LED color — LED voltage

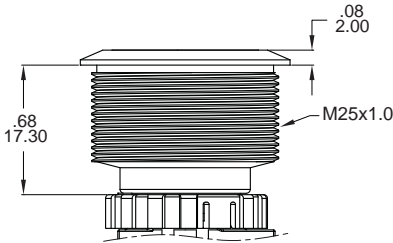


MW25 Series

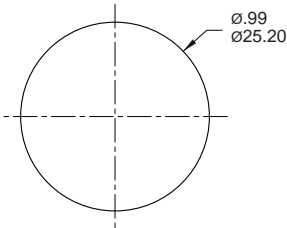
25mm High Current Metal Pushbutton Switches

BODY TYPE

A0/C3



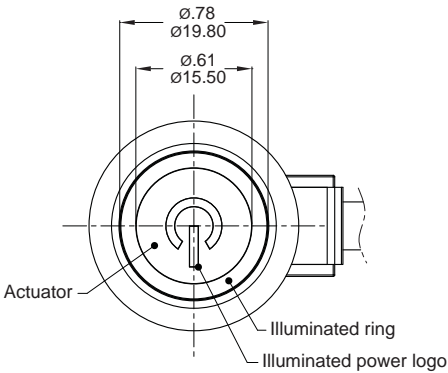
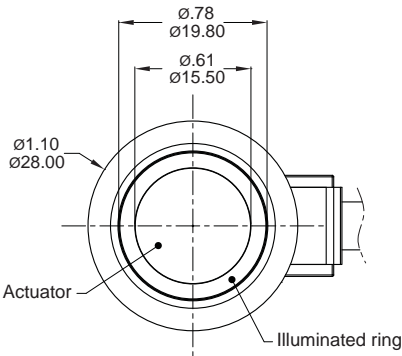
PANEL MOUNTING
Max.Panel thickness: 10.0mm[.39]



LIGHT TYPE

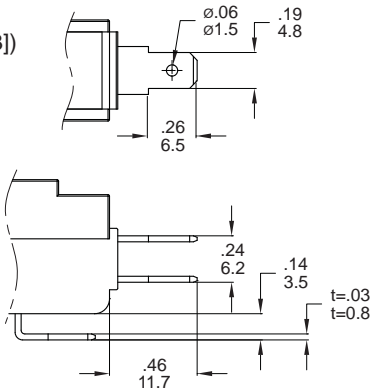
E Ring Moveable

L Ring+Power logo

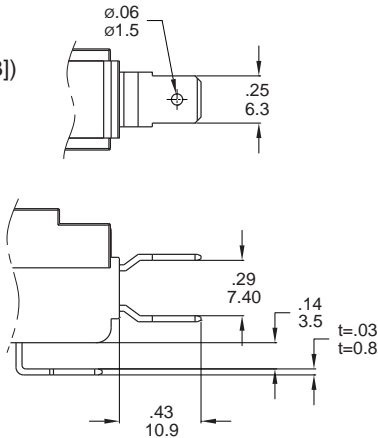


TERMINAL TYPE

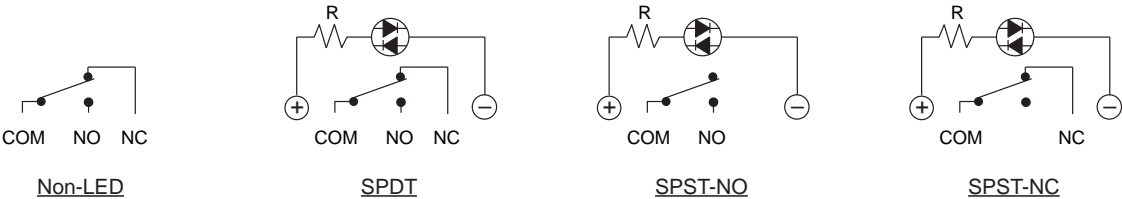
#187 Only 16A
Quick-connect
terminal(t=0.8mm[.03])



#250 Only 26A
Quick-connect
terminal(t=0.8mm[.03])

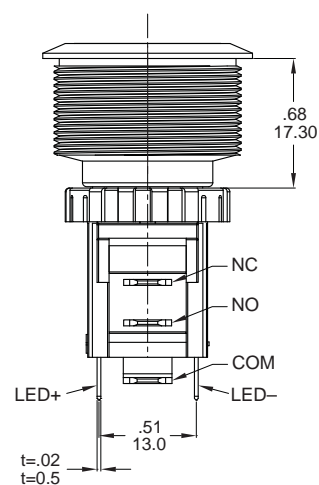
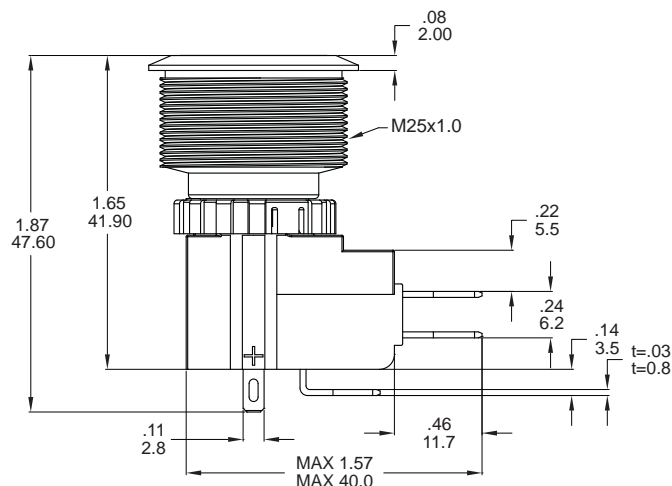
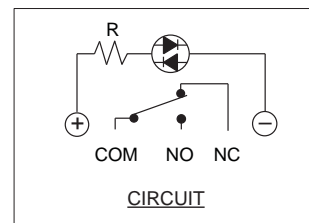
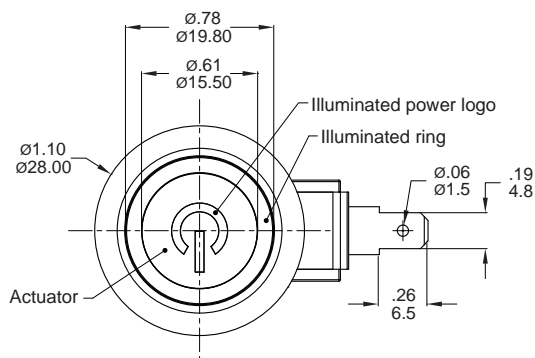


CIRCUIT



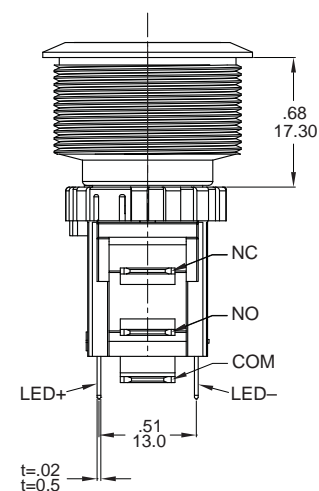
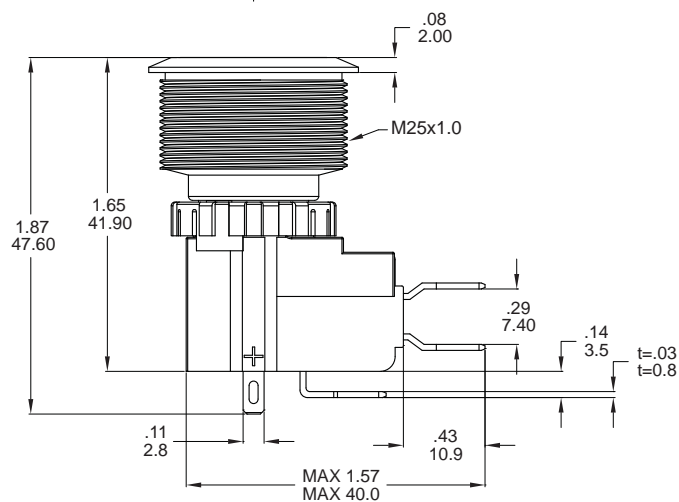
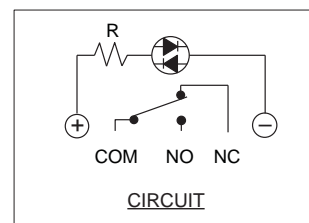
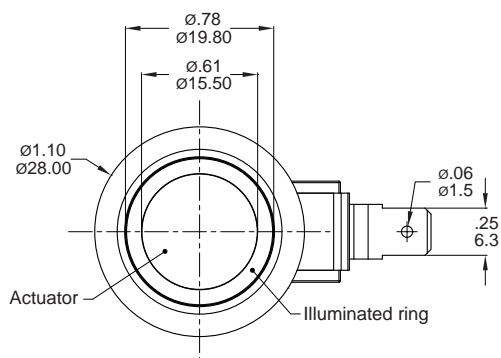
DIMENSION

L Ring+Power logo



Part No. Shown : MW25-A0F1L1□-A1ZB

E Ring Moveable



Part No. Shown : MW22-A0F0E7□-A3ZA