



HOW TO ORDER

MODEL NO.

LED COLOR

PBL



Led color

ITEM NO	COLOR
01	White
03	Red
05	Yellow
06	Green
07	Blue
76	Blue (Green)

SPECIFICATIONS

POLE-POSITION : Momentary Type, SPST with LED

CONTACT RATING : 30V DC,0.1A

CONTACT RESISTANCE : 50mΩ max. 1.5V DC ; 100mA,
by Method of Voltage DROP

INSULATION RESISTANCE : 100 MΩ min. 500V DC

DIELECTRIC STRENGTH : 500V AC for 1 Minute

OPERATING FORCE : 250±100gf

OPERATING LIFE : 50,000 cycles

OPERATING TEMPERATURE RANGE : -40°C ~ 85°C

TOTAL TRAVEL : 1.2±0.3mm

Materials

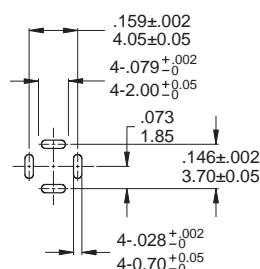
CAP : PC

CASE & HOUSING : Nylon 6/6

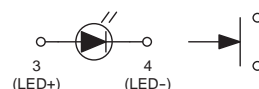
TERMINALS : Copper alloy with gold plated.

PCB MOUNTING & CIRCUIT DIAGRAM

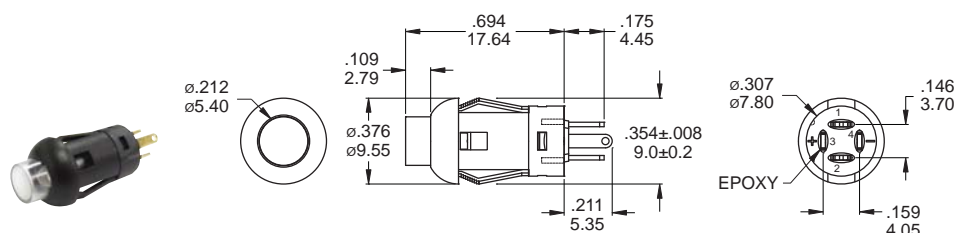
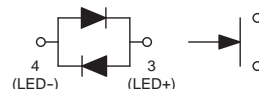
PCB mounting



Single LED

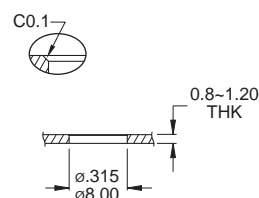


Dual colors LED

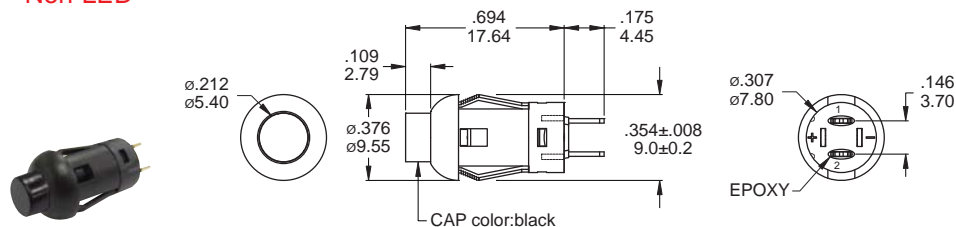


Part No. Shown : PBL-XX

PANEL MOUNTING

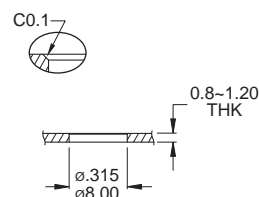


Non-LED



Part No. Shown : PBL-A2

PANEL MOUNTING



Circuit Diagram