

SPECIFICATIONS

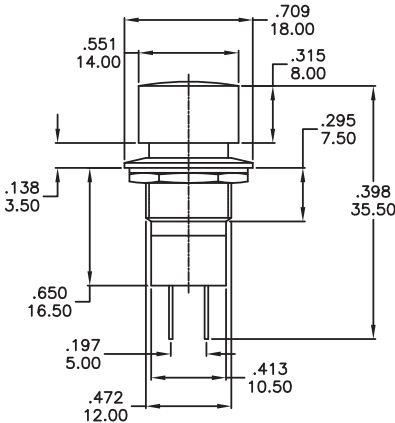
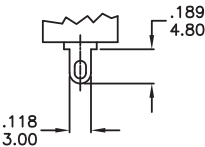
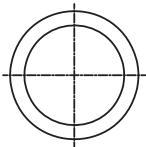
RATING: 1A 125VAC / 250VAC
CONTACT RESISITANCE: 30 mΩ max.
INSULATION RESISITANCE: DC 500V 100 MΩ min.
DIELECTRIC STRENGTH: AC 1000V 1 MINUTE.
ELECTRICAL LIFE: 5,000 cycles Min.
MECHANICAL LIFE: 10,000 cycles Min.
TERMINAL MATERIAL: Copper,alloy,(silver or gold),plated.
PUSH FORCE: >0.3kg

HOW TO ORDER

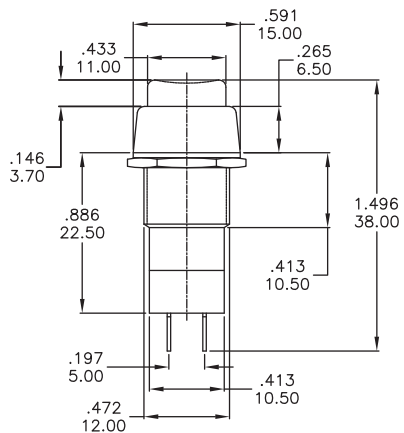
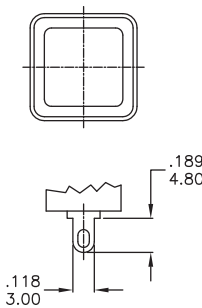
Model No.		Cap Color
<div><div></div><div></div><div></div><div></div><div></div></div>		<div></div>
PS21A	OFF-ON	
PS21B	OFF-(ON)	1 (White)
PS21C	ON-(OFF)	2 (Black)
PS23A	OFF-ON	3 (Red Std.)
PS23B	OFF-(ON)	4 (Orange)
PS23C	ON-(OFF)	5 (Yellow)
PS24A	OFF-ON	6 (Green)
PS24B	OFF-(ON)	7 (Blue)
PS25A	OFF-ON	8 (Brown)
PS25B	OFF-(ON)	9 (Gray)
PS25C	ON-(OFF)	
PS26A	OFF-ON	
PS26B	OFF-(ON)	
PS27A	OFF-(ON)	
PS27B	ON-(OFF)	
PS28A	OFF-(ON)	
PS28B	OFF-(ON)	
PS29A	OFF-(ON)	
PS29B	ON-(OFF)	
PS29C	OFF-ON	
PS32A	OFF-ON	
PS32B	OFF-(ON)	



PS21

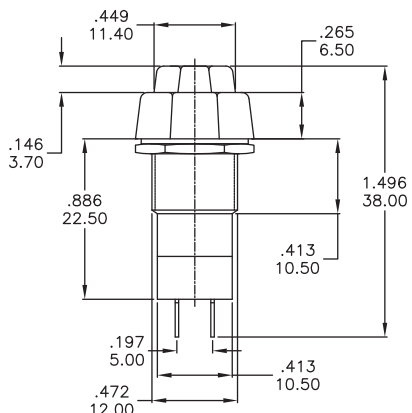
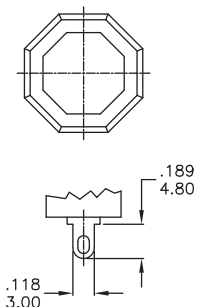


Model No.	TYPE
PS21A	OFF-ON (LOCK)
PS21B	OFF-(ON)
PS21C	ON-(OFF)



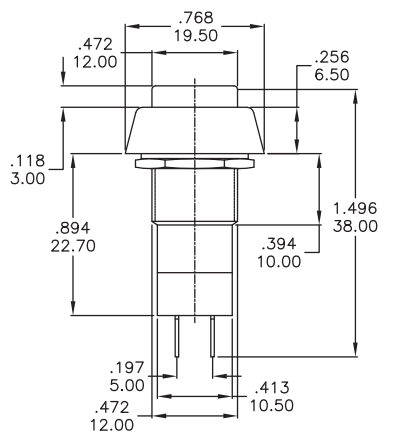
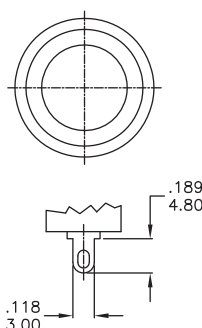
Model No.	TYPE
PS23A	OFF-ON (LOCK)
PS23B	OFF-(ON)
PS23C	ON-(OFF)

PS23



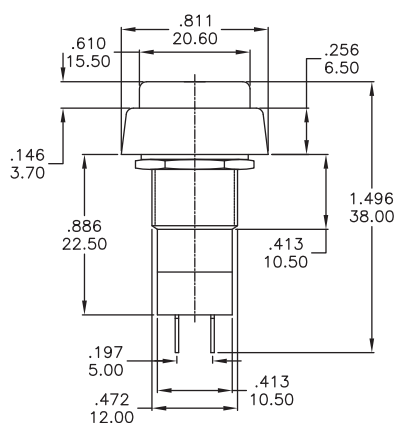
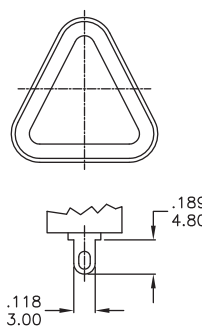
Model No.	TYPE
PS24A	OFF-ON (LOCK)
PS24B	OFF-(ON)

PS24



Model No.	TYPE
PS25A	OFF-ON (LOCK)
PS25B	OFF-(ON)
PS25C	ON-(OFF)

PS25



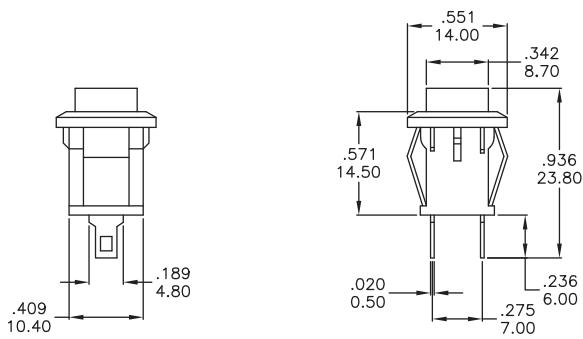
Model No.	TYPE
PS26A	OFF-ON (LOCK)
PS26B	OFF-(ON)

PS26

PS Series
Pushbutton Switches



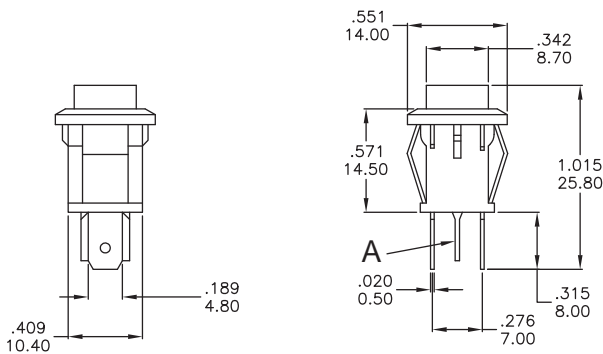
PS27



Model No.	TYPE
PS27A	OFF-(ON)
PS27B	ON-(OFF)



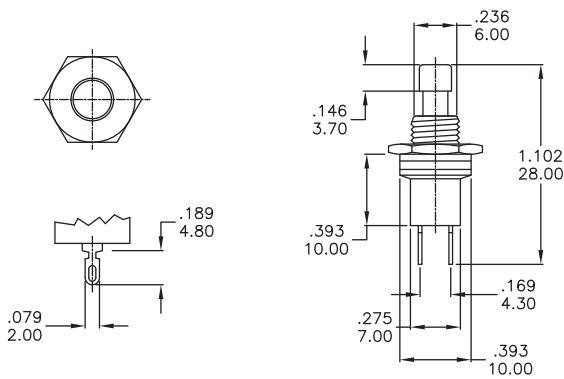
PS28



Model No.	TYPE	A
PS28A	OFF-(ON)	X
PS28B	OFF-(ON)	V



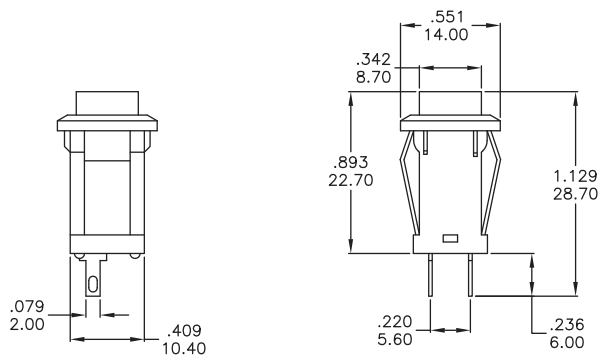
PS29



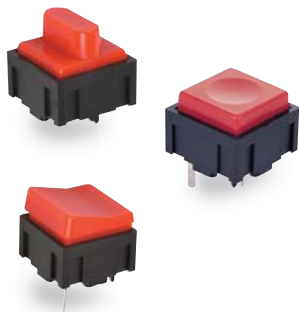
Model No.	TYPE
PS29A	OFF-(ON)
PS29B	ON-(OFF)
PS29C	OFF-NO (LOCK)



PS32



Model No.	TYPE
PS32A	OFF-ON (LOCK)
PS32B	OFF-(ON)



SPECIFICATIONS

RATING: 25mA @ 50VDC
ELECTRICAL LIFE: 10,000 cycles typical.
CONTACT RESISTANCE: 20 mΩ max. typical at 2-4VDC, 100mA
INSULATION RESISTANCE: 100 MΩ min.
DIELECTRIC STRENGTH: 500 V rms at sea level.
OPERATING FORCE: 250 ± 50gf

MATERIALS

HOUSING: Nylon 6/6.
COVER / CAP: ABS or polycarbonate.
DOME CONTACT: Gold over stainless steel.
TERMINALS / CONTACTS: Silver plated copper alloy.

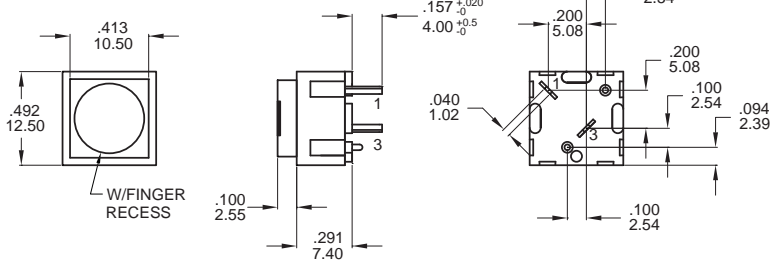
HOW TO ORDER

Model No. Circuit Cap Style Cap Color

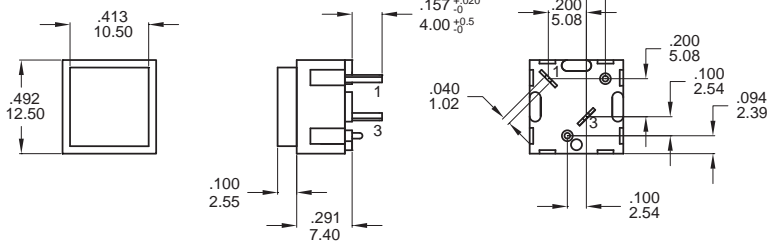
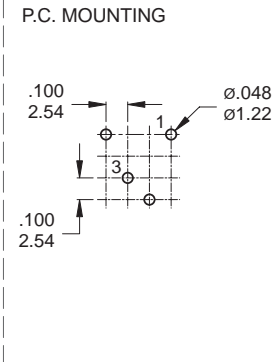


PS	1012	A	1 = White
		B	2 = Black (Std)
		C	3 = Red (Std)
		D	4 = Orange
		E	5 = Yellow
		F	6 = Green
			7 = Blue
			8 = Brown
			9 = Gray

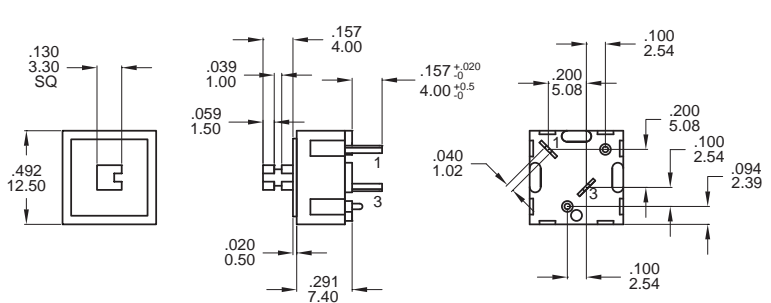
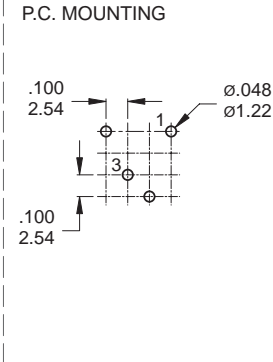
* Besides standard color, other colors need to check stocks available.



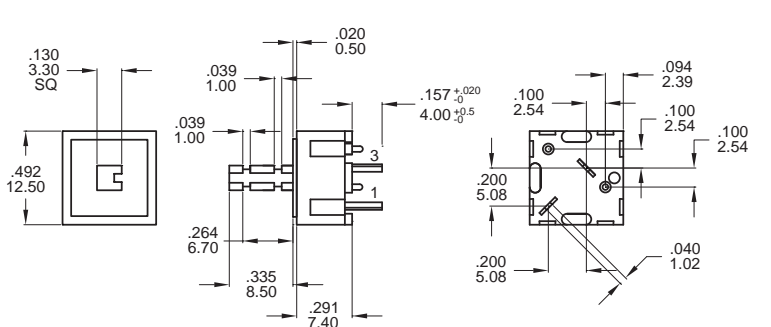
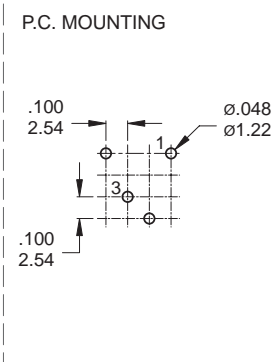
PS-1012-A3



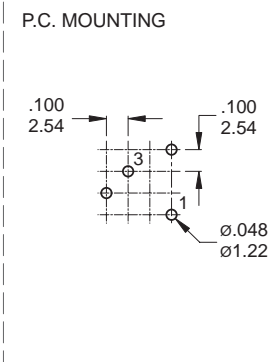
PS-1012-B2



PS-1012-C2

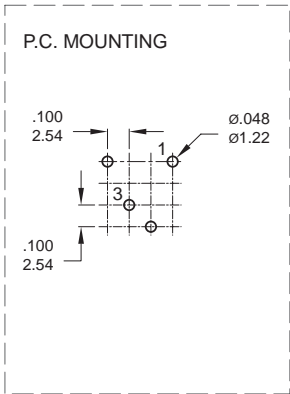
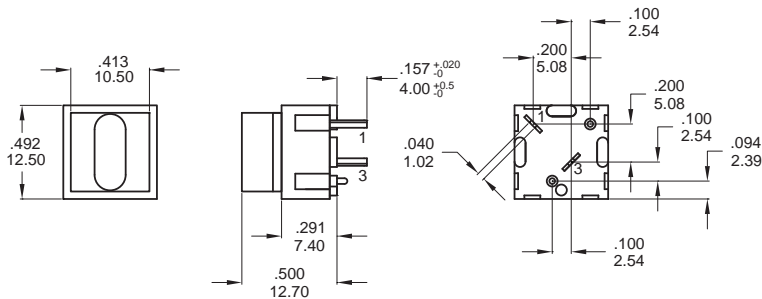


PS-1012-D2

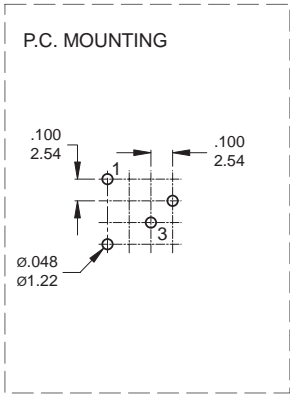
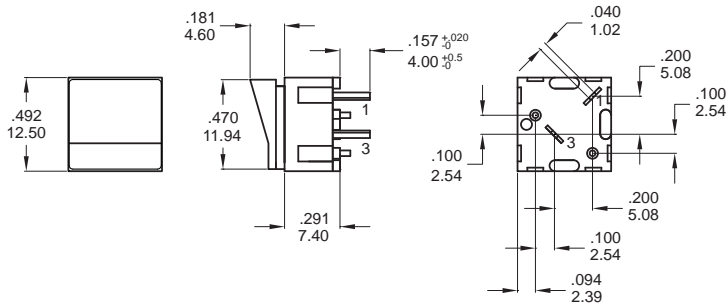




PS-1012-E3



PS-1012-F3



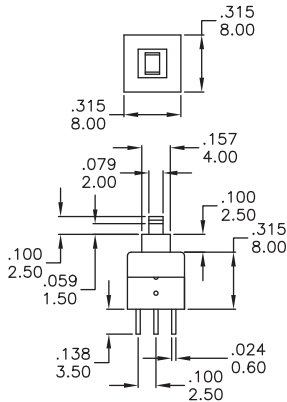
CAP OPTIONS

	PS001	PS002	PS003	PS004	PS005	PS006
COLORS	Black White Gray	Black / White Gray / Red Chrome	Black / Gray White / Red	Black / Gray	Black / White Gray / Red Chrome / Blue	Black / Gray White / Red

PS Series
Pushbutton Switches



BS800



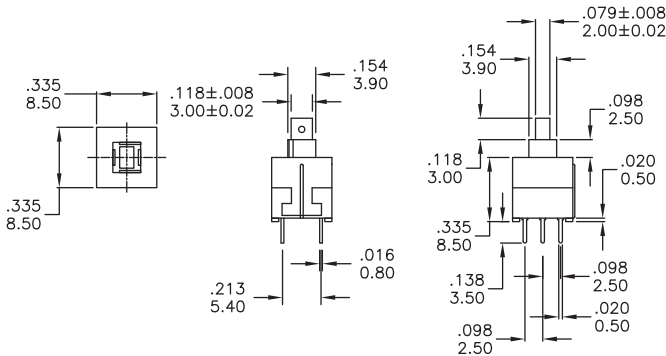
Model No.	Function
BS800N	OFF-MOM
BS800L	OFF-ON (LOCK)

Free	Push
1 2 3 ○ ○ ○	1 2 3 ○ ○ ○
4 5 6 ○ ○ ○	4 5 6 ○ ○ ○

- SPECIFICATION**
- 1.Rating : DC 30V 0.1A
 - 2.Circuit : 2C-2P
 - 3.Timing : Non-shoreing or S-Shoreing
 - 4.Operating Mode : Self Lock
Non-Lock
 - 5.Travel : Full 2.5
Lock 1.5
 - 6.Operating Force : 160 ± 80gf



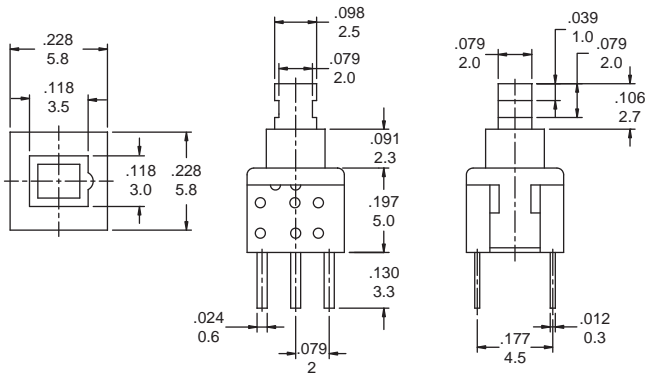
BS850



- SPECIFICATION**
- 1.Rating : DC 30V 0.3A
 - 2.Circuit : 2C-2P
 - 3.Timing : Non-shoreing or S-Shoreing
 - 4.Operating Mode : Self Lock
Non-Lock
 - 5.Travel : Full 2.5
Lock 1.5
 - 6.Operating Force : 200 ± 80gf



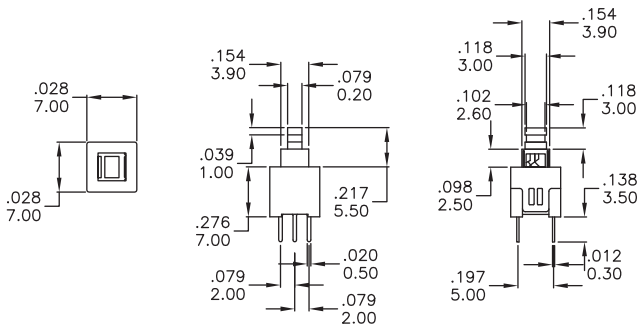
PS580L



- SPECIFICATION**
- 1.Rating : DC 30V 0.1A
 - 2.Circuit : 2C-2P
 - 3.Timing : Non-shoreing or S-Shoreing
 - 4.Terminal : p.c.board terminal
 - 5.Operating Mode : Self Lock
 - 6.Travel : Full 1.8
Lock 1.0
 - 7.Operating Force : 160 ± 80gf

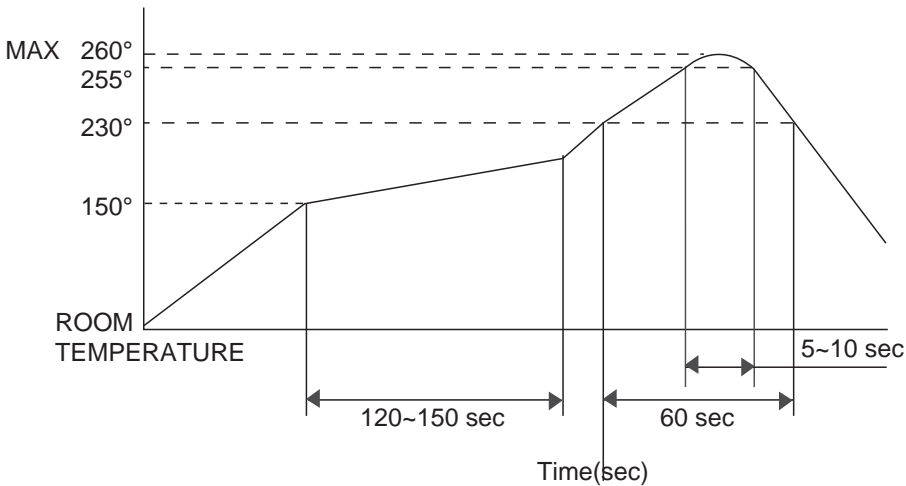


PS701



- SPECIFICATION**
- 1.Rating : DC 30V 0.1A
 - 2.Circuit : 2C-2P
 - 3.Timing : Non-shoreing or S-Shoreing
 - 4.Operating Mode : Self Lock
Non-Lock
 - 5.Travel : Full 1.8
Lock 1
 - 6.Operating Force : 150 ± 80gf

LEAD - FREE SOLDERING CONDITION

ITEM	LEAD - FREE SOLDERING CONDITION
HAND SOLDERING	350°C±10°C / 5 sec max.
WAVE SOLDERING	Pre - Heat 100°C/60 sec 260°C±5°C / 5 sec
REFLOW SOLDERING	

RoHS COMPLIANT

- The limit value that we declare.
Pb<100 ppm
Cd<75 ppm
Hg<2 ppm
Cr6<2 ppm
PBB<0 ppm
PBDE<0 ppm
- Start from jan 2005.