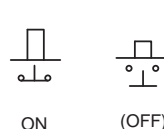
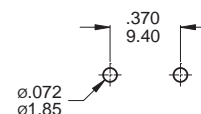


Part No. Shown : DS-001



SCHMATIC



P.C. MOUNTING

SPECIFICATIONS

CONTACT RATING : 0.5A 120VAC

MECHANICAL LIFE : 100,000 make-and-break cycles

CONTACT RESISTANCE : 200milliohms maximum

INSULATION RESISTANCE : 100megohms minimum

DIELECTRIC STRENGTH : 1,000 V RMS@sea level.

ACTUATION FORCE : 200±50 grams

ACTUATION TRAVEL : 5.50±0.25 mm

MATERIALS

CASE & BUSHING : Glass filled nylon 66 or 46 (UL94V-0)

PLUNGER : Glass filled nylon 66 (UL94V-0)

CONTACT & TERMINALS : Copper alloy,with silver or gold plated.

WAVE SOLDERING :

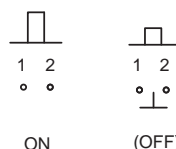
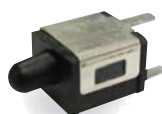
Recommended Soldering Temperature 260°C±5°C

Duration of Solder Immersion : 5 seconds max.(PCB is 1.6mm)

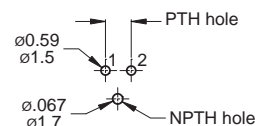


DS
Pushbutton Switches

Part No. Shown : DS-003



SCHMATIC



P.C. MOUNTING

SPECIFICATIONS

CONTACT RATING : 0.5A 120VAC

MECHANICAL LIFE : 100,000 make-and-break cycles

CONTACT RESISTANCE : 200milliohms maximum

INSULATION RESISTANCE : 100megohms minimum

DIELECTRIC STRENGTH : 500 V RMS@sea level.

ACTUATION FORCE : 200±50 grams

ACTUATION OVERTRAVEL : 4.20±0.25 mm

PT=PRETRAVEL : 0.50+/-0.30mm

OP=OPREATION POSITION : 11.70+/-0.30mm

MATERIALS

CASE: Glass filled FR52 for RoHs (UL94V-0)

HOUSING: SUS301,tin plated.

PLUNGER : Glass filled PBT for RoHs (UL94V-0)

CONTACT : PBS.

TERMINALS : Brass,silver plated.

WAVE SOLDERING :

Recommended Soldering Temperature 260°C±5°C

Duration of Solder Immersion : 5 seconds max.(PCB is 1.6mm)

