

X2-LC83 Series

Pushbutton Switches



SPECIFICATION

- Electrical Rating : 15A 250VAC/125VAC(UL)
10(4)A 250VAC(VDE)
- Mechanical life: Over 30000 cycles
- Electrical life: Over 10000 cycles
- Contact resistance: <20mΩ
- Insulation resistance: >1000MΩ
- High voltage resistance: >1500V 1 min.
- Ambient temperature: Terminal side -20 to +85℃
Actuating side -20 to +55℃
- Storage temperature: -30 to +80℃ Max
- Atmospheric humidity: Max.85%
- Actuating force: 3 to 6N(Depends on different switch function)
- Flammability: 94V-2
- Temperature rise at the terminal: Max 30℃ (UL1054)
- Solder ability of terminal: Max 350℃, 3s

MATERIALS

- Housing: PA66
- Rocker: PC
- Contacts: Silver alloy
- Terminal: Copper silver plated
- Spring: SUS
- Movable Arm: Copper silver plated
- Lamp: Neon Lamp, Tungsten Lamp
- Bracket: PA66





HOW TO ORDER

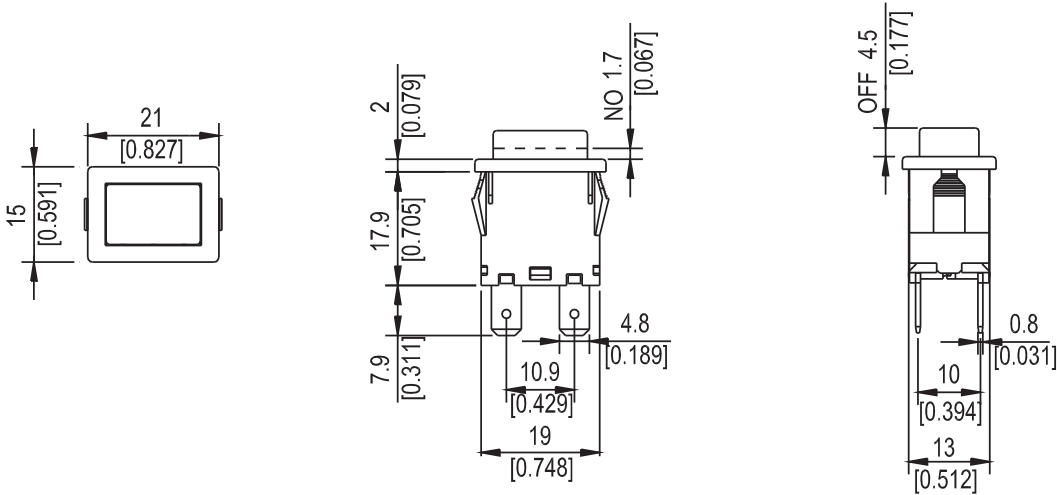
X2-LC83
Pushbutton Switches

Series	Switch Function	Housing Color	Actuator Color	Marking	Terminal Type	Lamp Voltage	Safety Approval
X2-LC83	01	K	K	E	T	0	C
Series				E No Marking			
01	ON - OFF		W White			0 No lamp	
02	(ON) - OFF		K Black			1 125V AC	
03	ON-OFF (with lamp)		R Red			2 250V AC	C 4 Safety Approvals
04	(ON) - OFF(with lamp)	W White	Y Yellow(illu)			3 12V DC	E None Approvals
05	ON - OFF	K Black	M Green(illu)			4 24V DC	
06	(ON) - OFF		D Red(illu)		T Quick connect tab type		
07	ON-OFF(with lamp)						
08	(ON)-OFF(with lamp)						

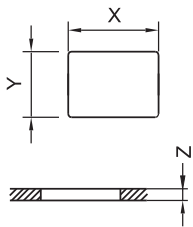
OPTIONS OF SWITCH FUNCTION

Item No	POLES&THROWS	Push button position ():Momentary		
		Down	Center	Up
				
X2-LC8301	SPST	ON	None	OFF
X2-LC8302	SPST	(ON)	None	OFF
X2-LC8303	SPST(with lamp)	ON	None	OFF
X2-LC8304	SPST(with lamp)	(ON)	None	OFF
X2-LC8305	DPST	ON	None	OFF
X2-LC8306	DPST	(ON)	None	OFF
X2-LC8307	DPST(with lamp)	ON	None	OFF
X2-LC8308	DPST(with lamp)	(ON)	None	OFF

DIMENSION



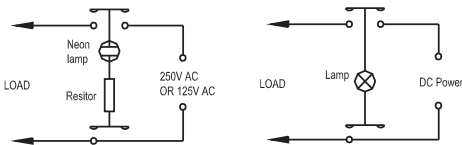
PANEL CUT OUT



Z	Y	X
0.70~1.25	12.90~13.00	19.10~19.20
1.25~2.00	12.90~13.00	19.30~19.40
2.00~3.00	12.90~13.00	19.50~19.60

CIRCUITS FOR SWITCH WITH LAMP

Circuits for LC8303,LC8304



Circuits for LC8307,LC8308

