

X2-LC210 Series

Pushbutton Switches



SPECIFICATION

Electrical Rating : 16A 250VAC/125VAC(UL)
10(4)A 250VAC(VDE,ENEC)
Mechanical life: Over 30000 cycles
Electrical life: Over 10000 cycles
Contact resistance: <20mΩ(Initial)
Insulation resistance: >1000MΩ
High voltage resistance: >1500V 1 min.
Ambient temperature: Terminal side -20 to +85°C
Actuating side -20 to +55°C
Storage temperature: -30 to +85°C
Atmospheric humidity: Max.85%
Actuating force: 3 ~8N(Depends on different switch function)
Flammability: UL94 V-2
Temperature rise at the terminal: Max 30°C (UL1054)
Solder ability of terminal: Max 350°C, 3s

MATERIALS

Housing: PA66
Rocker: PC/PA66
Contacts: Silver alloy
Terminal: Brass sliver plated
Spring: SWC
Movable Arm: C2680
Bracket: PA66


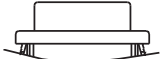


HOW TO ORDER

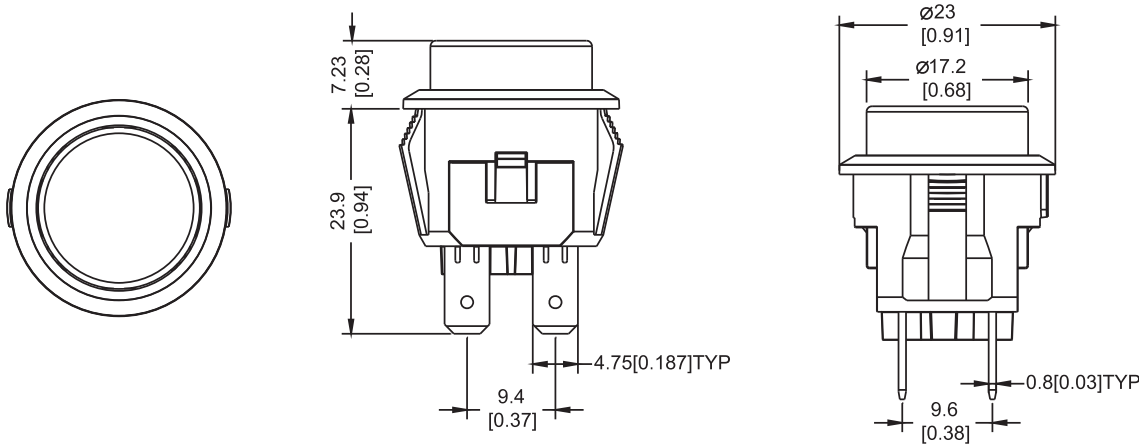
X2-LC210	1	K	K	E	T	0	B
Series	Switch Function	Housing Color	Actuator Color	Marking	Terminal Type	Lamp Voltage	Safety Approval
Series							
	1 ON - OFF		W White	E No Marking		0 No lamp	F 5 Safety Approvals
	2 (ON) - OFF		K Black			1 125V AC	B UL,CUL,CQC
	5 ON - OFF		R Red			2 250V AC	
	6 (ON) - OFF		Y Yellow(illu)			3 12V DC	
	7 ON-OFF(with lamp)	W White	M Green(illu)			4 24V DC	
	8 (ON)-OFF(with lamp)	K Black	D Red(illu)		T Quick connect tab type		

X2-LC210
Pushbutton Switches

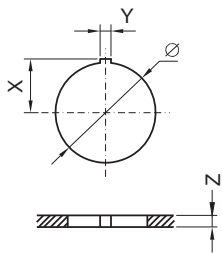
OPTIONS OF SWITCH FUNCTION

Item No	POLES & THROWS	Down	Center	Up
			••	
X2-LC2101	SPST	ON	None	OFF
X2-LC2102	SPST	(ON)	None	OFF
X2-LC2105	DPST	ON	None	OFF
X2-LC2106	DPST	(ON)	None	OFF
X2-LC2107	DPST(with lamp)	ON	None	OFF
X2-LC2108	DPST(with lamp)	(ON)	None	OFF

DIMENSION



PANEL CUT OUT



PANEL CUT OUT			
Z	Y	X	Ø
0.7~1.25	2	11	Ø20.5
1.25~2.0	2	11	Ø20.5
2.0~3.0	2	11	Ø20.5

CIRCUITS FOR SWITCH WITH LAMP

