

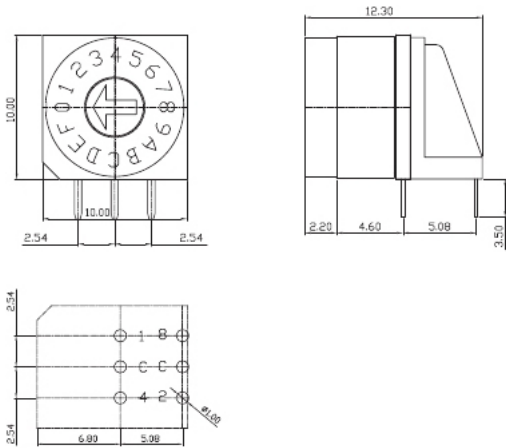
MEC-16H



MEC-16H

1 Type

Round
Angle Type



How to Order 选型表

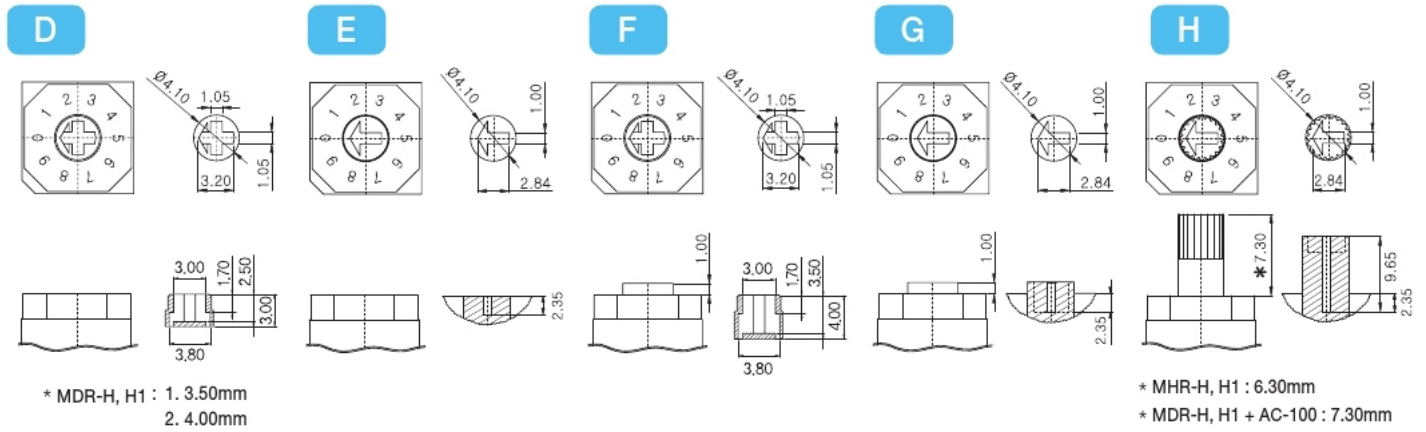
	Type	Actuators	Code	Position	Terminals	Solder Condition
	1	2	3	4	5	6
ex)	P	E	R	10	H	-

	Type	Actuators	Code	Position	Terminals	Solder Condition
	1	2	3	4	5	6
ex)	M	E	R	10	H	-

General Specification 产品性能

1. Rating 工作电流, 电压	Voltage 42V 150mA (Switching) 200mA (None-Switching)
2. Contact Resistance 接触电阻	80mΩ Max
3. Insulation Resistance 绝缘电阻	100MΩ Min
4. Operating Force 操作力	700gf Max
5. Life Cycle 使用寿命	10,000 steps
6. Solder Condition 焊接方式	Reflow Soldering : 10s/260°C Iron Soldering : 4s/350°C Wave Soldering : 5s/280°C
7. Sealing 防水系数	IP67 (Dust & Water Proof) * Except Cross Type of Actuator ("D" Type)

2 Actuators 外观形式



3 Code 编码表

See Page 37

4 Position 位数形式

4 Position

6 Position

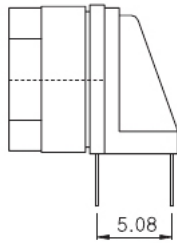
8 Position

10 Position

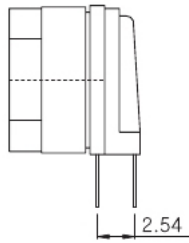
16 Position

5 Terminals PIN角形式

H Angle Type (5.08)



H1 Angle Type (2.54)



6 Solder Condition 焊接方式

-

PCB Hole Type : Iron Soldering : 2s/340°C

Wave Soldering : 5s/280°C

T

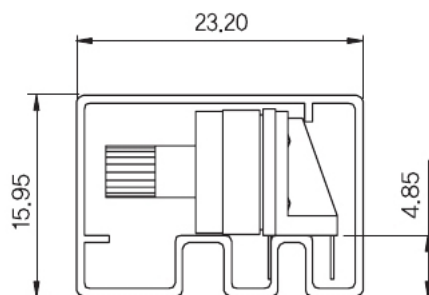
Through Hole Reflow : Reflow Soldering : 10s/260°C

Iron Soldering : 2s/340°C

Wave Soldering : 5s/280°C

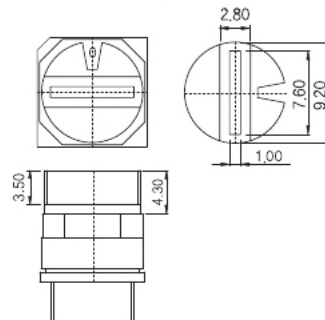
7 Packing 包装形式

- Tube Packing Q'ty : 50pcs / Tube



Accessories 配件

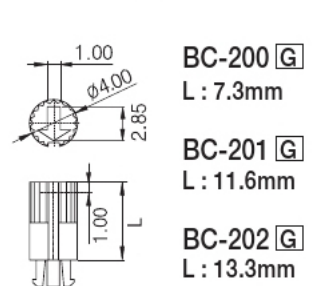
AC-100 **G**



* Applicable to only 'D' Actuators

* Should be mounted after soldering

BC-200 **G**



G : Gray R : Red K : Black
Y : Yellow B : Blue C : Clear

3 Code 编码表

R Real Code

	04 Position	Real Code			
		C	1	2	
	0	*			
	1	*	*		
	2	*		*	
	3	*	*	*	

01 20
0C 00
01 00

	06 Position	Real Code				
		C	1	2	4	8
	0	*				
	1	*	*			
	2	*		*		
	3	*	*	*		
	4	*			*	
	5	*	*	*	*	

01 00
0C 00
04 20

	08 Position	Real Code					
		C	1	2	4	8	
	0	*					
	1	*	*				
	2	*		*			
	3	*	*	*			
	4	*			*		
	5	*	*	*	*		
	6	*	*	*	*	*	
	7	*	*	*	*	*	*

01 00
0C 00
04 20

	10 Position	Real Code						
		C	1	2	4	8		
	0	*						
	1	*	*					
	2	*		*				
	3	*	*	*				
	4	*			*			
	5	*	*	*	*			
	6	*	*	*	*	*		
	7	*	*	*	*	*	*	
	8	*	*	*	*	*	*	*
	9	*	*	*	*	*	*	*

	16 Position	Real Code							
		C	1	2	4	8			
	0	*							
	1	*	*						
	2	*		*					
	3	*	*	*					
	4	*			*				
	5	*	*	*	*				
	6	*	*	*	*	*			
	7	*	*	*	*	*	*		
	8	*	*	*	*	*	*	*	
	9	*	*	*	*	*	*	*	*
	10	*	*	*	*	*	*	*	*
	11	*	*	*	*	*	*	*	*
	12	*	*	*	*	*	*	*	*
	13	*	*	*	*	*	*	*	*
	14	*	*	*	*	*	*	*	*
	15	*	*	*	*	*	*	*	*

C Complement Code

	04 Position	Complement Code			
		C	1	2	
	0	*	*	*	
	1	*		*	
	2	*	*		
	3	*			

01 20
0C 00
01 00

	06 Position	Complement Code				
		C	1	2	4	8
	0	*	*	*	*	*
	1	*		*	*	*
	2	*	*		*	*
	3	*	*	*	*	*
	4	*	*	*	*	*
	5	*	*	*	*	*

01 80
0C 00
04 20

	08 Position	Complement Code					
		C	1	2	4	8	
	0	*	*	*	*	*	*
	1	*		*	*	*	*
	2	*	*		*	*	*
	3	*	*	*	*	*	*
	4	*	*	*	*	*	*
	5	*	*	*	*	*	*
	6	*	*	*	*	*	*
	7	*	*	*	*	*	*

01 80
0C 00
04 20

	10 Position	Complement Code						
		C	1	2	4	8		
	0	*	*	*	*	*	*	*
	1	*		*	*	*	*	*
	2	*	*		*	*	*	*
	3	*	*	*	*	*	*	*
	4	*	*	*	*	*	*	*
	5	*	*	*	*	*	*	*
	6	*	*	*	*	*	*	*
	7	*	*	*	*	*	*	*
	8	*	*	*	*	*	*	*
	9	*	*	*	*	*	*	*

	16 Position	Complement Code							
		C	1	2	4	8			
	0	*	*	*	*	*	*	*	*
	1	*		*	*	*	*	*	*
	2	*	*		*	*	*	*	*
	3	*	*	*	*	*	*	*	*
	4	*	*	*	*	*	*	*	*
	5	*	*	*	*	*	*	*	*
	6	*	*	*	*	*	*	*	*
	7	*	*	*	*	*	*	*	*
	8	*	*	*	*	*	*	*	*
	9	*	*	*	*	*	*	*	*
	10	*	*	*	*	*	*	*	*
	11	*	*	*	*	*	*	*	*
	12	*	*	*	*	*	*	*	*
	13	*	*	*	*	*	*	*	*
	14	*	*	*	*	*	*	*	*
	15	*	*	*	*	*	*	*	*

G Gray Code

	10 Position	Gray Code				
		C	1	2	4	8
	0	*				*
	1	*	*			
	2	*		*		
	3	*	*	*		
	4	*			*	
	5	*	*	*	*	
	6	*	*	*	*	*
	7	*	*	*	*	*
	8	*	*	*	*	*
	9	*	*	*	*	*

	16 Position	Gray Code					
		C	1	2	4	8	
	0	*					0
	1	*	*				1
	2	*		*			2
	3	*	*	*			3
	4	*			*		4
	5	*	*	*	*		5
	6	*	*	*	*	*	6
	7	*	*	*	*	*	7
	8	*	*	*	*	*	8
	9	*	*	*	*	*	9
	10	*	*	*	*	*	A
	11	*	*	*	*	*	B
	12	*	*	*	*	*	C
	13	*	*	*	*	*	D
	14	*	*	*	*	*	E
	15	*	*	*	*	*	F

	10 Position	Gray Complement Code				
		C	1	2	4	8
	0	*	*	*	*	*
	1	*		*	*	*
	2	*	*		*	*
	3	*	*	*	*	*
	4	*	*		*	*
	5	*	*	*	*	*
	6	*	*	*	*	*
	7	*	*	*	*	*
	8	*	*	*	*	*
	9	*	*	*	*	*

Special Code 特殊编码表

	10 Position	Real Code				
		C	1	2	4	8
	0	*				
	1	*	*			
	2	*		*		
	3	*	*	*		
	4	*			*	
	5	*	*	*	*	
	6	*	*	*	*	*
	7	*	*	*	*	*
	8	*	*	*	*	*
	9	*	*	*	*	*

04 10
0C 20
08 20

	16 Position	Complement Code					
		C	1	2	4	8	
	0	*	*	*	*	*	0
	1	*		*	*	*	1
	2	*	*		*	*	2
	3	*	*	*	*	*	3
	4	*	*		*	*	4
	5	*	*	*	*	*	5
	6	*	*	*	*	*	6
	7	*	*	*	*	*	7
	8	*	*	*	*	*	8
	9	*	*	*	*	*	9
	10	*	*	*	*	*	A
	11	*	*	*	*	*	B
	12	*	*	*	*	*	C
	13	*	*	*	*	*	D
	14	*	*	*	*	*	E
	15	*	*	*	*	*	F

0C 20
0C 00
04 10

	04 Position	Decimal			
		C	1	2	4
	0	*			*
	1	*	*		
	2	*		*	
	3	*	*	*	

01 00
0C 00
04 10

	06 Position	Real Code				
		C	1	2	4	8
	0	*				
	1	*	*			
	2	*		*		
	3	*	*	*		
	4	*			*	
	5	*	*	*	*	

01 00
0C 00
02 40

	04 Position	Real Code		
		C	1	2
	0	*	*	
	1	*		*
	2	*	*	*
	3	*		

01 00
0C 00
02 00

	16 Position	Complement Code					
		C	1	2	4	8	
	0	*	*	*	*	*	0
	1	*		*	*	*	1
	2	*	*		*	*	2
	3	*	*	*	*	*	3
	4	*	*		*	*	4
	5	*	*	*	*	*	5
	6	*	*	*	*	*	6
	7	*	*	*	*	*	7
	8	*	*	*	*	*	8
	9	*	*	*	*	*	9
	10	*	*	*	*	*	A
	11	*	*	*	*	*	B
	12	*	*	*	*	*	C
	13	*	*	*	*	*	D
	14	*	*	*	*	*	E
	15	*	*	*	*	*	F

04 10
0C 20
08 20

	04 Position	Real Code		
		C	1	2
	0	*		
	1	*	*	
	2	*		*
	3	*	*	*

02 00
0C 00
01 00

	10 Position	Special Code BCD (Intermittent Switching)				
		C	1	2	4	8
	0	*				
	1	*	*			
	2	*		*		
	3	*	*	*		
	4	*			*	
	5	*	*	*	*	
	6	*	*	*	*	*
	7	*	*	*	*	*
	8	*	*	*	*	*
	9	*	*	*	*	*

04 20
0C 00
08 10

	16 Position	Real Code					
		C	1	2	4	8	
	0	*					
	1	*	*				
	2	*		*			
	3	*	*	*			
	4	*			*		
	5	*	*	*	*		
	6	*	*	*	*	*	
	7	*	*	*	*	*	*
	8	*	*	*	*	*	*
	9	*	*	*	*	*	*
	10	*	*	*	*	*	*
	11	*	*	*	*	*	*
	12	*	*	*	*	*	*
	13	*	*	*	*	*	*
	14	*	*	*	*	*	*
	15	*	*	*	*	*	*

0C 20
01 00
02 10

	Position	Special Code mit / with 2 "C" (Terminal)	
--	----------	--	--