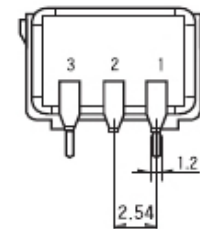
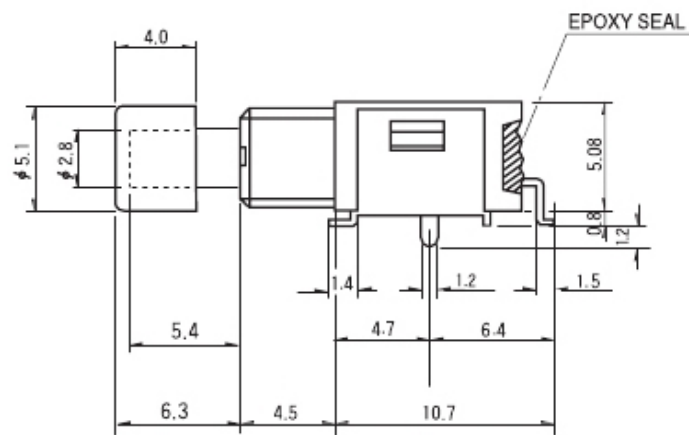
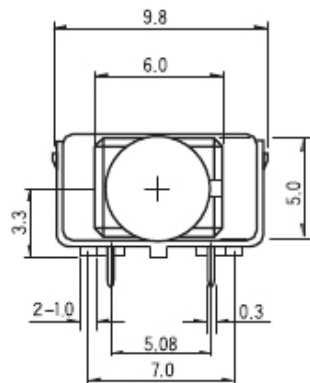
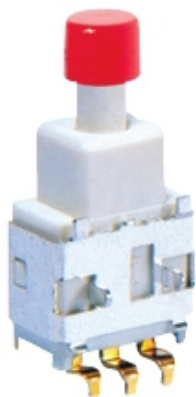


SPDT

# SP-12SH-S

SP-12SH-S

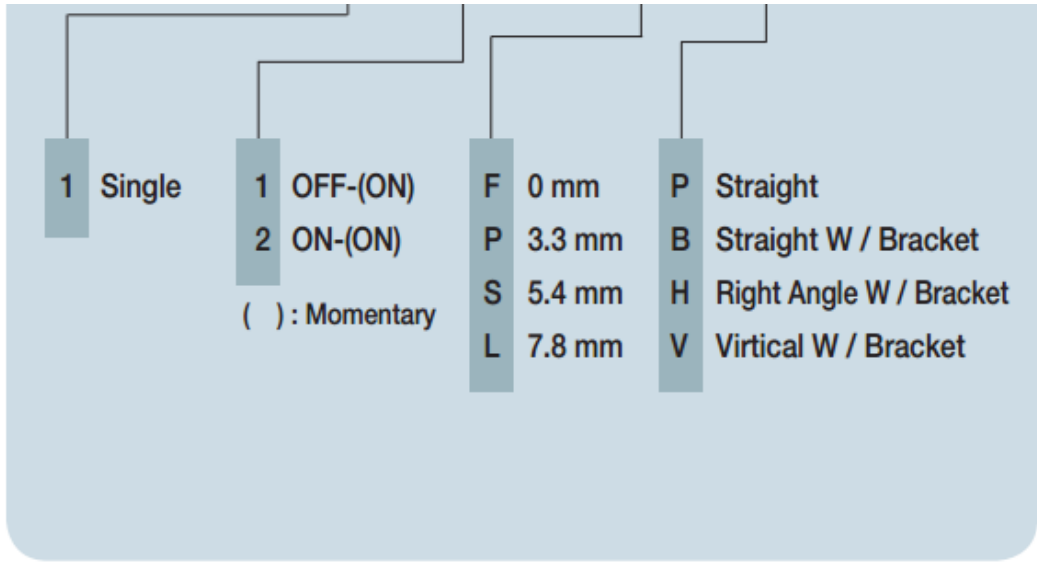


## Order Code Order 选型表

Type	Poles	Circuit	Push Length	Terminals	SMD Type
ex) SP	1	2	S	H	S

## General Specification 产品性能

- |                                  |                            |
|----------------------------------|----------------------------|
| 1. Rating<br>工作电流, 电压            | 0.4VA at 28V AC or DC Max. |
| 2. Contact Resistance<br>接触电阻    | Max 50mΩ                   |
| 3. Insulation Resistance<br>绝缘电阻 | Min 500MΩ, at DC 500V      |



4. Operating Force 操作力	1 Minute at AC 500V
5. Life Cycle 使用寿命	250±100gf (1 pole), 350±100gf (2pole)
6. Travel 移动	1.1mm
7. Ambient Temp. Range 环境温度范围	-30℃ ~ + 85℃
8. Solder Conditions 焊接方式	5 sec, 270℃

MODEL	POLES	CIRCUIT		SCHEMATICS
		NORMAL	DOWN	
SP-11	SPST	OFF	(ON)	
SP-12	SPDT	ON 2-3	(ON) 1-2	