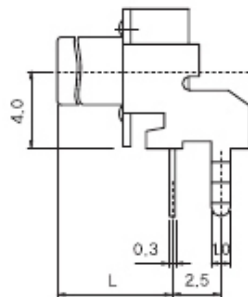
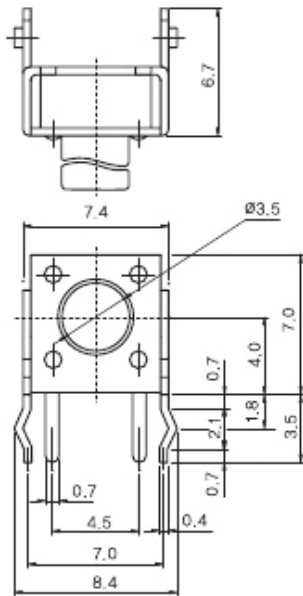


DIP TYPE

STP 1236

STP 1236



- 1. Rating 工作电流, 电压 : DC 12V, 50mA
- 2. Travel 移动 : 0.25 ± 0.1 m/m
- 3. Operating Force 操作力 : 160 ± 50 gf
- 4. Contact Resistance 接触电阻 : 100m Ω Max.
- 5. Life Cycle 使用寿命 : 100,000 Cycles

Model No.	STP 1236	STP 1236A	STP 1236B	STP 1236C	STP 1236D	STP 1236E	STP 1236F	STP 1236G	STP 1236J
L	3.15	3.85	8.35	6.85	11.85	6.15	7.35	5.85	15.85
Stem Color	Black	Black	Black	White	Black	Ivory	Gray	Black	Black