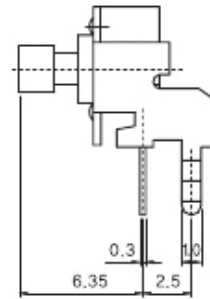
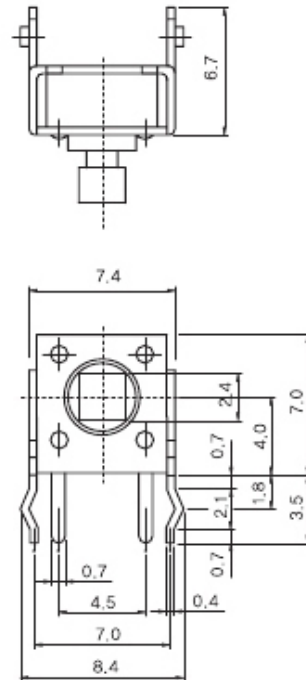


DIP TYPE

STP 1236T

STP 1236T



1. **Rating** 工作电流, 电压 : DC 12V, 50mA
2. **Travel** 移动 : 0.25 ± 0.1 m/m
3. **Operating Force** 操作力 : 160 ± 50 gf
4. **Contact Resistance** 接触电阻 : $100\text{m}\Omega$ Max.
5. **Life Cycle** 使用寿命 : 100,000 Cycles