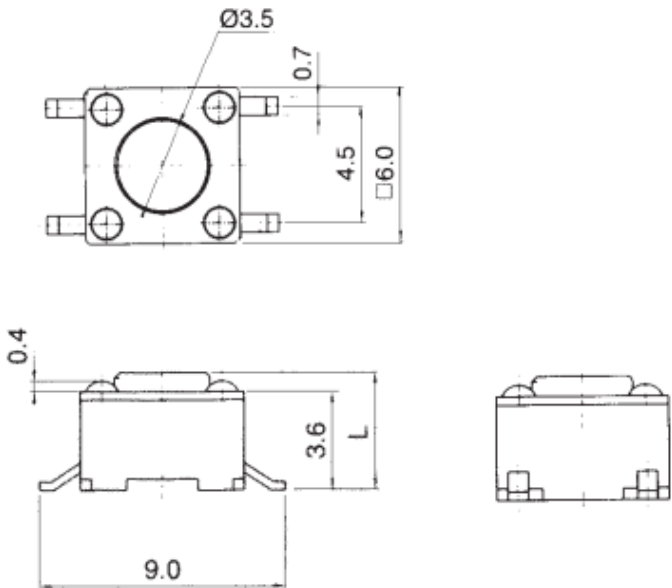


SMD TYPE

# STP-1238

- 1. Rating 工作电流, 电压 : DC 12V, 50mA
- 2. Travel 移动 :  $0.25 \pm \begin{smallmatrix} 0.2 \\ 0.1 \end{smallmatrix}$  m/m
- 3. Operating Force 操作力 :  $160 \pm 50$ gf
- 4. Contact Resistance 接触电阻 :  $100\text{m}\Omega$  Max.
- 5. Reel Package : 1,000PCS/REEL  
(STP 1238, STP 1238A)

STP 1238



| Model No.    | STP 1238 | STP 1238A | STP 1238H | STP 1238B | STP 1238C | STP 1238D | STP 1238E | STP 1238F | STP 1238G |
|--------------|----------|-----------|-----------|-----------|-----------|-----------|-----------|-----------|-----------|
| L            | 4.3      | 5.0       | 6.0       | 9.5       | 8.0       | 13.0      | 7.3       | 8.5       | 7.0       |
| Stem Color   | Black    | White     | Black     | Black     | Black     | Black     | Ivory     | Gray      | Black     |
| Reel Package | 1K       | 1K        | 700       | 600       | 700       | 300       | 700       | 700       | 700       |