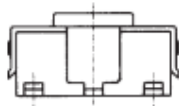
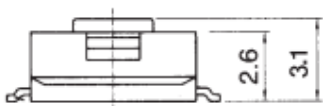
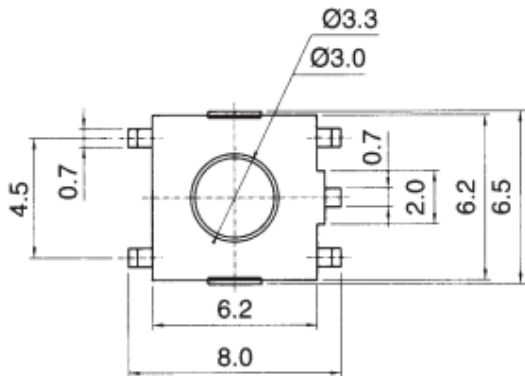
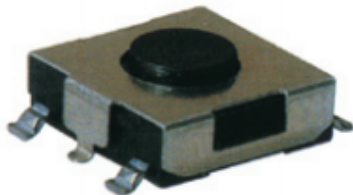


SMD TYPE

# STP-1122A

STP 1122A



- 1. Rating 工作电流, 电压 : DC 12V, 50mA
- 2. Travel 移动 :  $0.25 \pm \begin{smallmatrix} 0.2 \\ 0.1 \end{smallmatrix}$  m/m
- 3. Operating Force 操作力 :  $160 \pm 30$ gf
- 4. Contact Resistance 接触电阻 :  $100\text{m}\Omega$  Max.
- 5. Life Cycle 使用寿命 : 1,000,000 Cycles
- 6. Reel Package : 1,700PCS/REEL

Model No.	Operating Force	Stem Color
STP 1122A	160gf	Black
STS 1122AW	260gf	Red