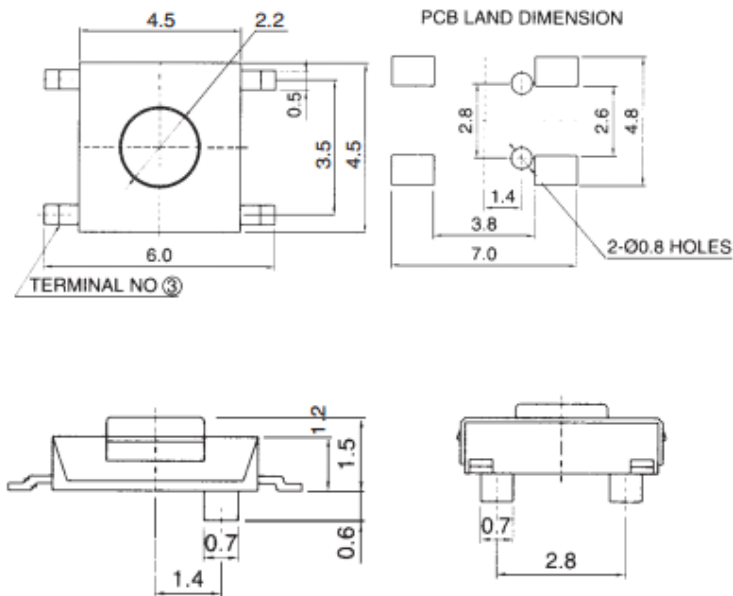
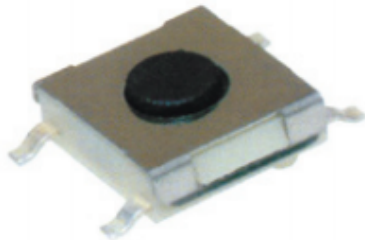


SMD TYPE

STP-1127C

STP 1127C



1. Rating 工作电流, 电压 : DC 12V, 50mA
2. Travel 移动 : $0.25 \pm 0.1\text{m/m}$
3. Operating Force 操作力 : $180, 250 \pm 50\text{gf}$
4. Contact Resistance 接触电阻 : $100\text{m}\Omega$ Max.
5. Life Cycle 使用寿命 : 50,000 Cycles
6. Reel Package : 4,000PCS/REEL

Model No.	Stem (L)
STP 1127C	1.5
STP 1127CA	4.3

1127, 1127A : Without Embossing