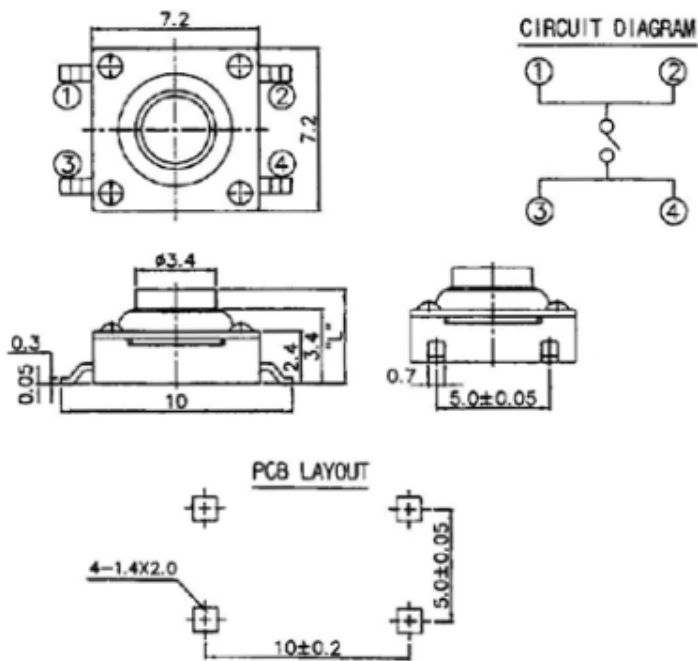


STP-1159S

WATER PROOF SWITCH

STP 1159S



- 1. Rating 工作电流, 电压 : DC 12V, 50mA
- 2. Contact Resistance 接触电阻 : 100mΩ Max.
- 3. Operating Force 操作力 : 200gf ± 70gf
- 4. General Tolerance : ± 0.3mm
- 5. Travel 移动 : 0.30 ± 0.1mm
- 6. Life Cycle 使用寿命 : 100,000 Cycles

Model No.	L	Stem Color	Package
STP 1159S	4.3	Blue	1,000cs/reel
STP 1159SA	5.0	Gray	1,000cs/reel
STP 1159SB	7.0	Black	800cs/reel